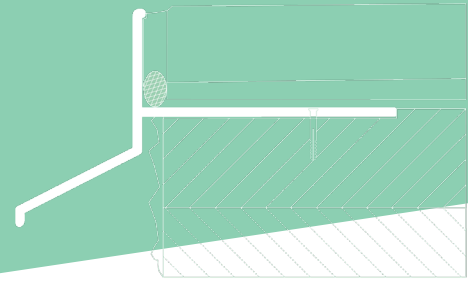


Renoplast D25

DRIP EDGE

D25 drip edge is part of MULTI D25 system designed for floors finished with porcelain pavers fixed with adhesive to sealing slurry waterproofing layer, or covered with composite deck tiles.



KEY FEATURES

- particularly recommended for non-typical terrace, patio and balcony floor designs
- long-term durability and full corrosion resistance

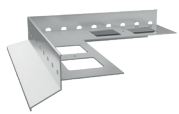
TECHNICAL DATA

BODY	AW 6060 aluminium alloy
WEIGHT	approx. 550 g/m (linear meter)
COATING SYSTEM	0.6 g/m ² conversion coating, and min. 60 µm polyester powder coating

INSTALLATION TOOLS

You will need the following tools: folding ruler, spirit level, knife, electric drill, hand-held mixer, steel plastering trowel, string line, pencil, spatula, metal handsaw or circular saw. Circular saw should be equipped with an aluminium cutting blade to cut without damaging the coating.

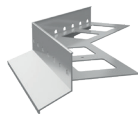
AUXILIARY COMPONENTS



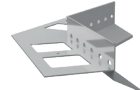
D25 90
EXTERNAL CORNER



D25 90
INTERNAL CORNER



D25 135
EXTERNAL CORNER



D25 135
INTERNAL CORNER



LD25 DRIP
EDGE CLIP



OPD25 R+L WALL
PROTECTION END CAPS

BASE

The base must be sound, level and clean. Screeds should be of min. C20 strength and should cure for 28 days. A recess, 3mm deep by 80 mm wide, should be formed around the floor perimeter to allow setting the drip edge flush with the screed top surface. This recess may be blocked out with blockout strip (supplied on request) in the case of new screed layers. In existing screeds the recess should be milled to the required depth and width (80 mm by 3 mm).

AMBIENT CONDITIONS DURING INSTALLATION

Ambient conditions should be as typically required for waterproofing and installation work.

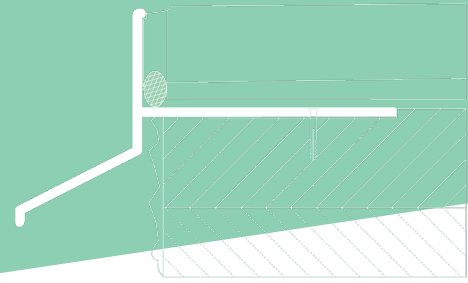
COLOURS

Standard colours: RAL 7037 dusty grey, RAL 7024 graphite grey, RAL 8019 grey brown. Other colours from RAL Classic chart are available on request.

Renoplast D25

DRIP EDGE

D25 drip edge is part of MULTI D25 system designed for floors finished with porcelain pavers fixed with adhesive to sealing slurry waterproofing layer, or covered with composite deck tiles.



INSTALLATION

The drip edges should be set on sealing slurry or flexible sealant and secured in place with plastic plugs. Follow the installation guide available at: <https://www.renoplast.pl/download>.

SEE PRODUCT →



INSTALLATION GUIDELINES

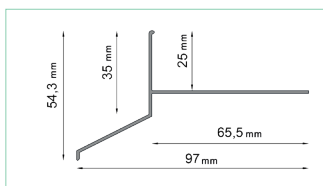
Protect the paint coat from damage during installation. Reject any damaged components. Any dirt should be removed from the surfaces using water and non-abrasive cloth. Wet materials, such as sealing slurry or tile adhesive should be removed from the outer surfaces before drying. The manufacturer shall not be liable for any damage resulting from product misuse or using inadequate auxiliary materials or tools. All work must be in compliance with construction plans, product data sheet, relevant standards, good construction practice and safety requirements.

MAINTENANCE GUIDELINES

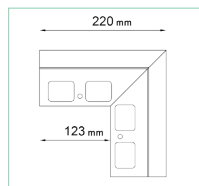
During use clean the trims at least twice a year. For cleaning use clean water and non-abrasive cloth. Do not use highly acidic or highly alkaline cleaners or surfactants which may react with aluminium. Do not use organic solvents containing esters, ketones, aromatic compounds, glycol esters, chlorinated hydrocarbons, etc. After cleaning rinse the surfaces with cold clean water. Do not use salt or other de-icing chemicals near the trims. We recommend to check the condition of the relevant terrace, patio and balcony components every six months. Immediately remove any discovered defects.

DIMENSIONS

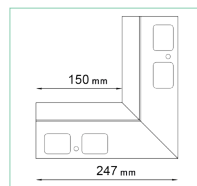
CROSS-SECTIONS:



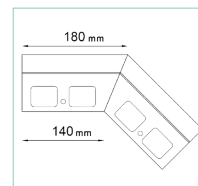
D25 DRIP EDGE



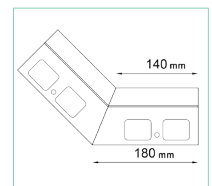
D25 90
EXTERNAL CORNER



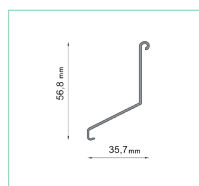
D25 90
INTERNAL CORNER



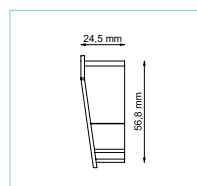
D25 135
EXTERNAL CORNER



D25 135
INTERNAL CORNER



LD25 DRIP EDGE CLIP

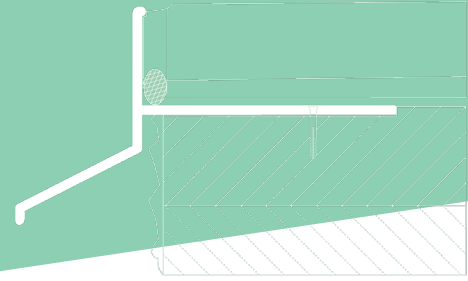


OPD25 R+L WALL
PROTECTION END CAPS

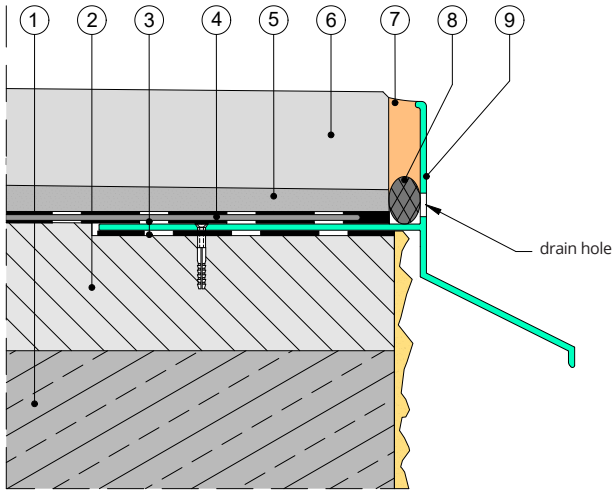
Renoplast D25

DRIP EDGE

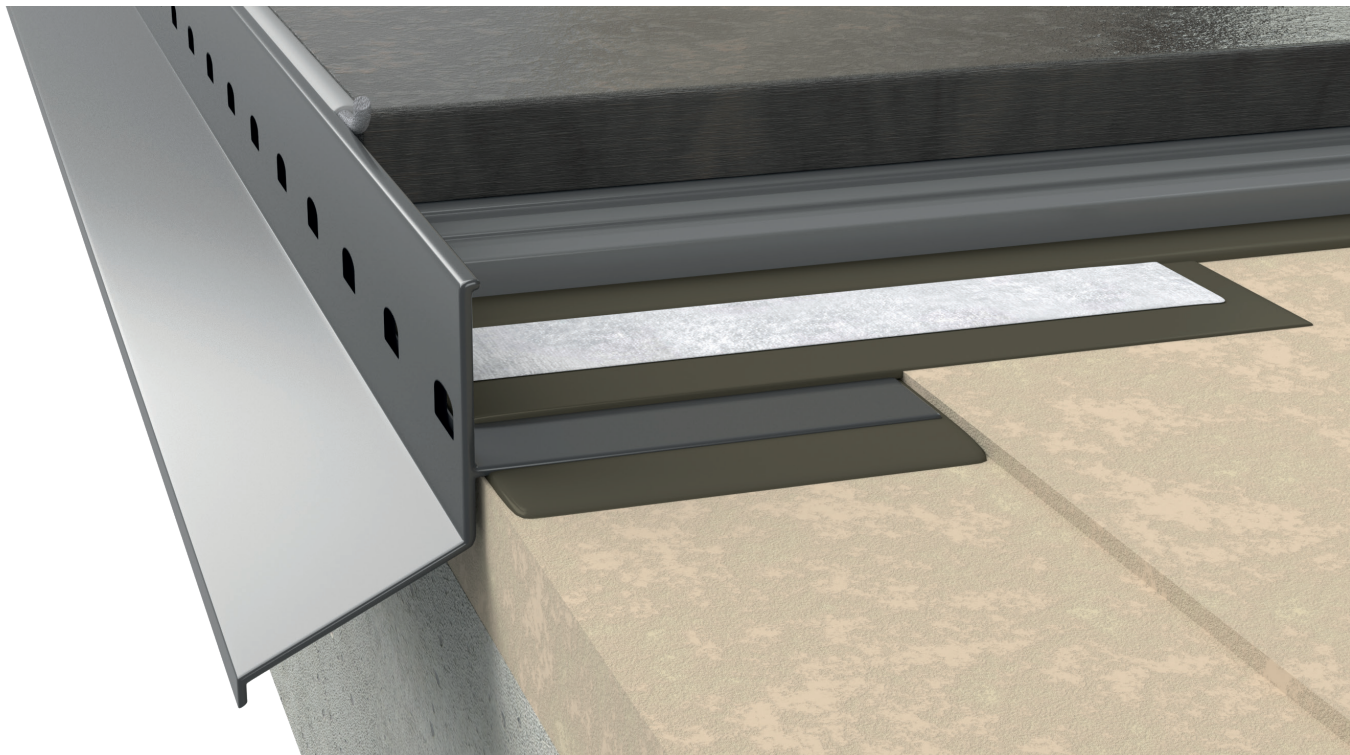
D25 drip edge is part of MULTI D25 system designed for floors finished with porcelain pavers fixed with adhesive to sealing slurry waterproofing layer, or covered with composite deck tiles.



INSTALLATION EXAMPLE



1. Structural slab
2. 1.5-2% sloping layer
3. Sealing slurry
4. PL3 waterproof sealing tape
5. Deformable tile adhesive
6. Pedestal pavers
7. Polyurethane sealant
8. Backer rod
9. D25 drip edge



Notes:

Edition: 8.05.2026. This product brochure supersedes all previous editions. It gives recommendations for standard application conditions only, and thus shall not be used in place of installation drawings. Suitability of our products for particular conditions should be verified by the contractor. The actual product specifications may vary slightly due to allowable process or tool dimension changes. Any materials used in combination with Renoplast products must be obtained from reputable sources. Our liability for any omissions or inaccuracies of the data given in this brochure is limited to gross disinformation and/or negligence.

Renoplast

RENOPLAST Sp. z o.o.
phone: +48 697 635 580
office@renoplast.pl
www.renoplast.pl/en

