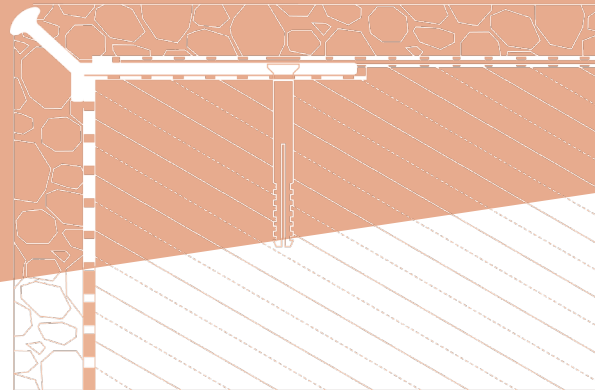


V V2

V and V2 are resin bound stair drip edge used to give a neat finish and protect the tread edges of stairs with pebblestone flooring.



KEY FEATURES

- edge protection of stair treads
- effective drainage of water from tread surfaces
- coated for long-term durability and full corrosion resistance

TECHNICAL DATA

BODY	AW 6060 aluminium alloy
WEIGHT	V approx. 125 g/m (linear meter), V2 approx. 175 g/m (linear meter)
COATING SYSTEM	0.6 - 1.2 g/m ² conversion coating, and min. 60 µm polyester powder coating

INSTALLATION TOOLS

You will need the following tools: folding ruler, spirit level, knife, electric drill, hand-held mixer, steel plastering trowel, string line, pencil, spatula, metal handsaw or circular saw. Circular saw should be equipped with an aluminium cutting blade to cut without damaging the coating.

BASE

The base should be sound, level and clean. Screeds should cure for 28 days and achieve adequate strength. A recess should be made along the tread edge to allow setting the trims flush with the tread surface. This recess should be 1.5 mm deep and 30 mm wide for V strip and 45 mm wide for V2 strip.

AMBIENT CONDITIONS DURING INSTALLATION

Ambient conditions should be as typically required for waterproofing and installation work.

COLOURS

Standard colours: RAL 7037 dusty grey, RAL 7024 graphite grey, RAL 8019 grey brown and natural (uncoated) aluminium. Other colours from RAL Classic chart are available on request.

INSTALLATION

V and V2 strips are set on sealing slurry and secured in place with plastic plugs. Follow the installation guide available at: <https://www.renoplast.pl/download>.

SEE PRODUCTS →



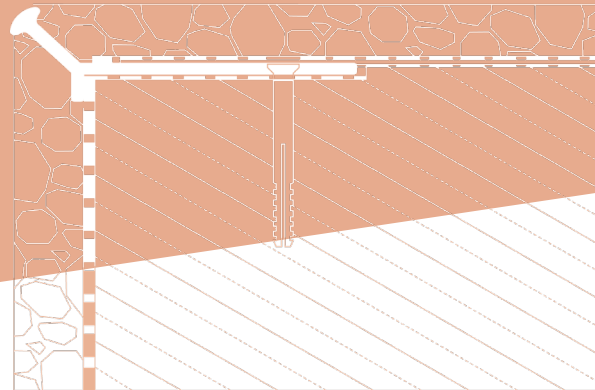
V



V2

V V2

V and V2 are resin bound stair drip edge used to give a neat finish and protect the tread edges of stairs with pebblestone flooring.



INSTALLATION GUIDELINES

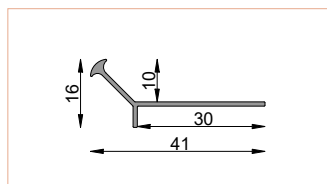
Protect the paint coat from damage during installation. Reject any damaged components. Any dirt should be removed from the surfaces using water and non-abrasive cloth. Wet materials, such as sealing slurry or tile adhesive should be removed from the outer surfaces before drying. The manufacturer shall not be liable for any damage resulting from product misuse or using inadequate auxiliary materials or tools. All work must be in compliance with construction plans, product data sheet, relevant standards, good construction practice and safety requirements.

MAINTENANCE GUIDELINES

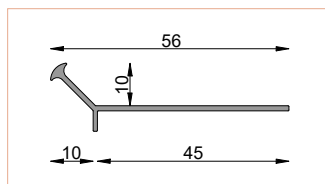
During use clean the trims at least twice a year. For cleaning use clean water and non-abrasive cloth. Do not use highly acidic or highly alkaline cleaners or surfactants which may react with aluminium. Do not use organic solvents containing esters, ketones, aromatic compounds, glycol esters, chlorinated hydrocarbons, etc. After cleaning rinse the surfaces with cold clean water. Do not use salt or other de-icing chemicals near the trims. We recommend to check the condition of the relevant terrace, patio and balcony components every six months. Immediately remove any discovered defects.

DIMENSIONS

CROSS-SECTIONS:

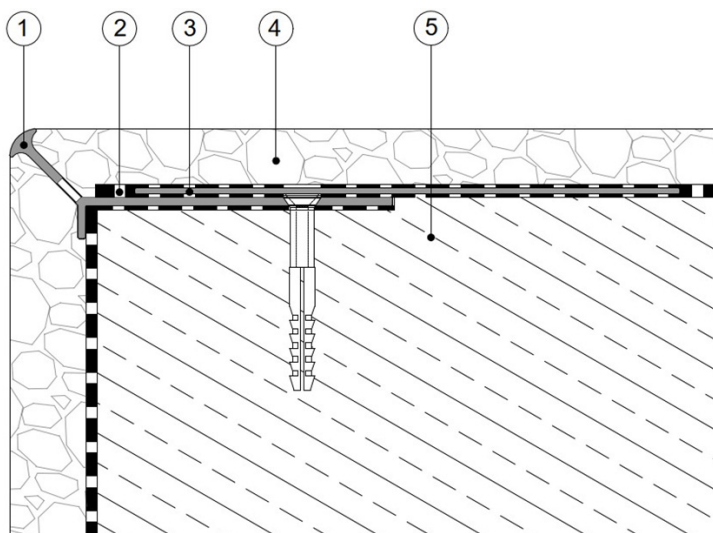


V STAIR DRIP EDGE



V2 STAIR DRIP EDGE

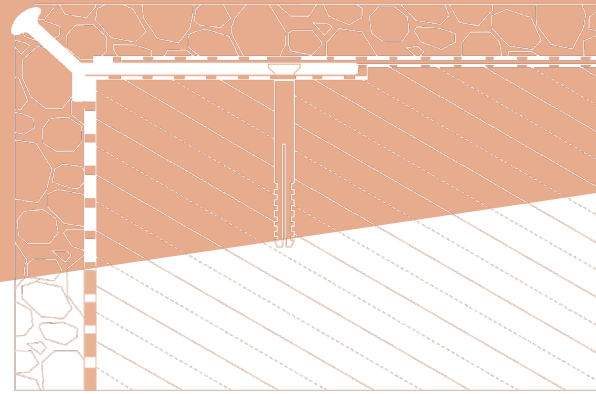
INSTALLATION EXAMPLE



1. V/V2 stair drip edge
2. Waterproof barrier
3. Reinforcing tape
4. Pebblestone flooring
5. Stair core

V
V2

V and V2 are resin bound stair drip edge used to give a neat finish and protect the tread edges of stairs with pebblestone flooring.



V STAIR DRIP EDGE

V2 STAIR DRIP EDGE



Notes:

Edition: 6.05.2026. This product brochure supersedes all previous editions. It gives recommendations for standard application conditions only, and thus shall not be used in place of installation drawings. Suitability of our products for particular conditions should be verified by the contractor. The actual product specifications may vary slightly due to allowable process or tool dimension changes. Any materials used in combination with Renoplast products must be obtained from reputable sources. Our liability for any omissions or inaccuracies of the data given in this brochure is limited to gross disinformation and/or negligence.

