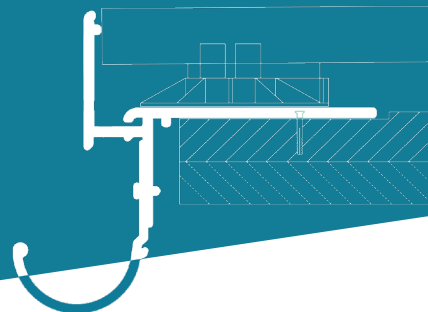


# Renoplast R50

## GUTTER SYSTEM

All components of R50 gutter system are compatible with the following RENOPLAST drip edges: K10R, K100R, K20R, K35, W35 PLUS, W30R PLUS, W60.



### KEY FEATURES

- effective drainage of water from balconies, terraces and patios
- all-in-one solution for quick and simple installation
- long-term durability and full corrosion resistance

### TECHNICAL DATA

<b>BODY</b>	AW 6060 aluminium alloy
<b>WEIGHT</b>	approx. 500 g/m (linear meter)
<b>COATING SYSTEM</b>	0.6 g/m <sup>2</sup> conversion coating, and min. 60 µm polyester powder coating

### INSTALLATION TOOLS

You will need the following tools: folding ruler, knife, electric drill, string line, pencil, spirit level, caulking gun, metal handsaw or circular saw. Circular saw should be equipped with an aluminium cutting blade to cut without damaging the coating.

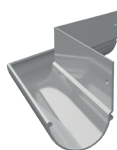
### AUXILIARY COMPONENTS



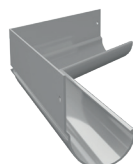
R50 90 EXTERNAL  
GUTTER ANGLE



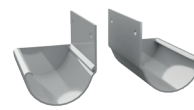
R50 90 INTERNAL  
GUTTER ANGLE



R50 135 EXTERNAL  
GUTTER ANGLE



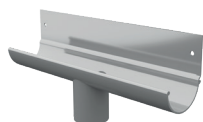
R50 135 INTERNAL  
GUTTER ANGLE



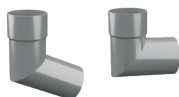
R50 R+L  
GUTTER STOPENDS  
(RIGHT AND LEFT)



R50 GUTTER  
UNION



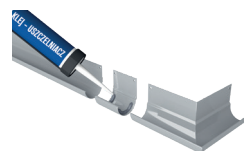
R50 RUNNING  
OUTLET



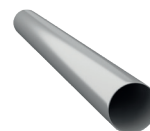
R50 67 OR 87  
DOWNPIPE  
OFFSET BEND



R50 40x40 mm  
DOWNPIPE CLIP,  
120 mm long clip screw  
250 mm long clip screw



SEALANT ADHESIVE



R50 40x40 mm  
ROUND DOWNPIPE  
0.5 m, 1 m, 2 m

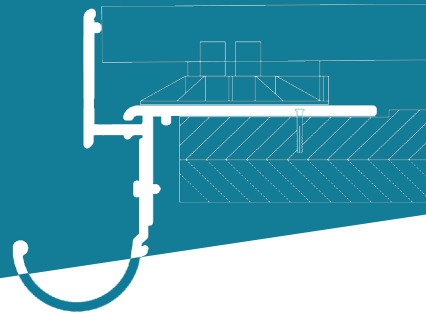
### COLOURS

Standard colours: RAL 7037 dusty grey, RAL 7024 graphite grey, RAL 8019 grey brown, RAL 9005 black. Other colours from RAL Classic chart are available on request.

# Renoplast R50

## GUTTER SYSTEM

All components of R50 gutter system are compatible with the following RENOPLAST drip edges: K10R, K100R, K20R, K35, W35 PLUS, W30R PLUS, W60.



### INSTALLATION

Follow the relevant installation guide available at: <https://www.renoplast.pl/download>.

SEE PRODUCT →



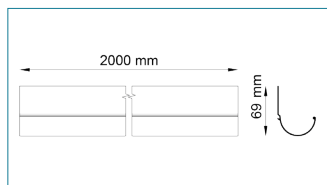
### INSTALLATION GUIDELINES

Protect the paint coat from damage during installation. Reject any damaged components. Any dirt should be removed from the surfaces using water and non-abrasive cloth. Wet materials, such as sealing slurry or tile adhesive should be removed from the outer surfaces before drying. The manufacturer shall not be liable for any damage resulting from product misuse or using inadequate auxiliary materials or tools. All work must be in compliance with construction plans, product data sheet, relevant standards, good construction practice and safety requirements.

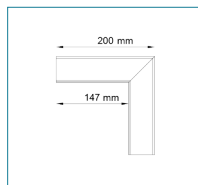
### MAINTENANCE GUIDELINES

For cleaning use clean water with some detergent. Do not use highly acidic or high alkaline cleaners or surfactants, which may react with aluminium. Do not use organic solvents containing esters, ketones, aromatic compounds, glycol esters, chlorinated hydrocarbons, etc. After cleaning rinse the surfaces with cold clean water. In winter do not use salt or other de-icing chemicals. We recommend to check the condition of the relevant terrace, patio and balcony components every six months. Immediately remove any discovered defects.

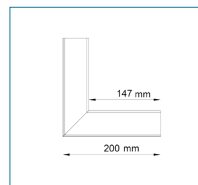
### DIMENSIONS



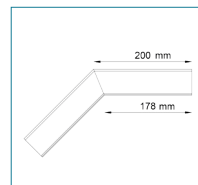
R50 ROUND GUTTER



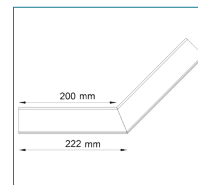
R50 90 EXTERNAL GUTTER ANGLE



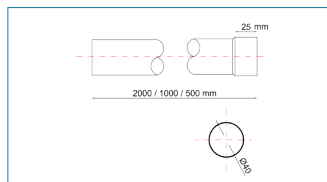
R50 90 INTERNAL GUTTER ANGLE



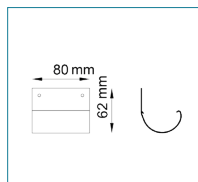
R50 135 EXTERNAL GUTTER ANGLE



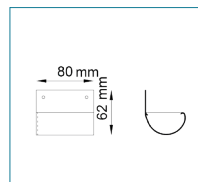
R50 135 INTERNAL GUTTER ANGLE



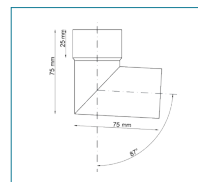
R50 ROUND DOWNPIPE



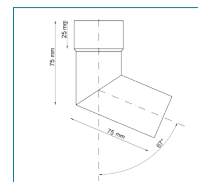
R50 GUTTER UNION



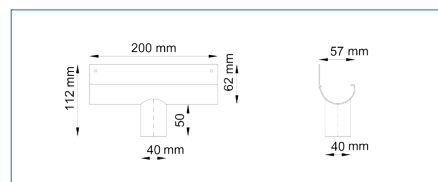
R50 P+L GUTTER STOPENDS (RIGHT AND LEFT)



R50 87 DOWNPIPE OFFSET BEND



R50 67 DOWNPIPE OFFSET BEND

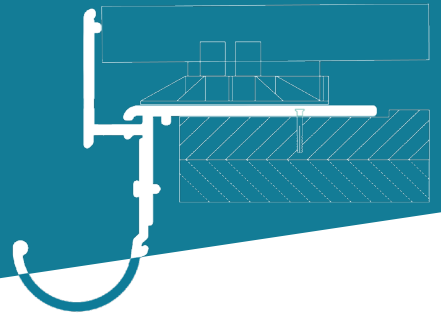


R50 RUNNING OUTLET

# Renoplast R50

## GUTTER SYSTEM

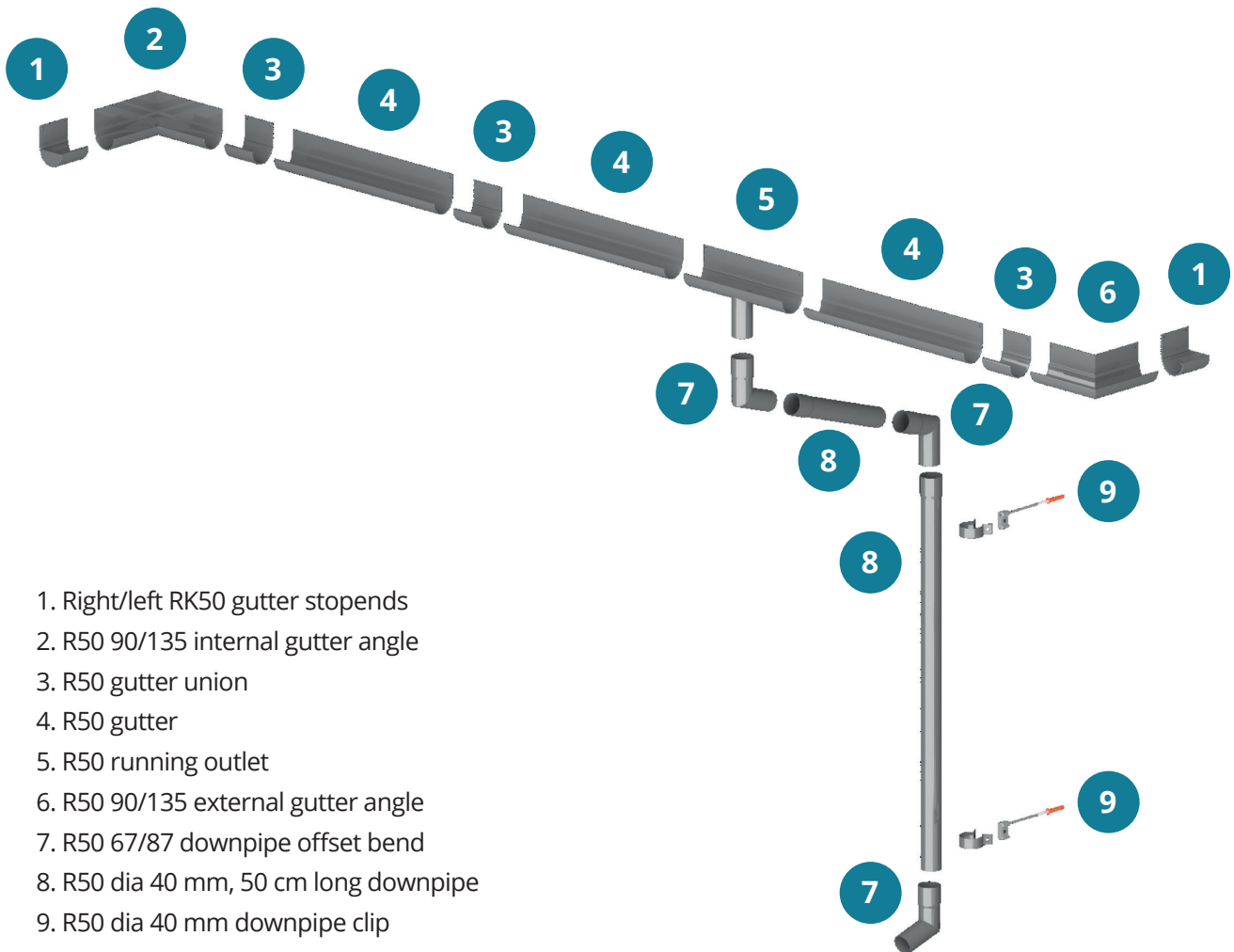
All components of R50 gutter system are compatible with the following RENOPLAST drip edges: K10R, K100R, K20R, K35, W35 PLUS, W30R PLUS, W60.



### COMPATIBILITY MATRIX

RENOPLAST DRIP EDGE	W35 PLUS	W60	W30R PLUS	K10R	K20R	K35	K100R	W30R	W20R	K40	
COMPATIBLE WITH R50 GUTTER	YES							NO			

### R50 GUTTER SYSTEM DIAGRAM

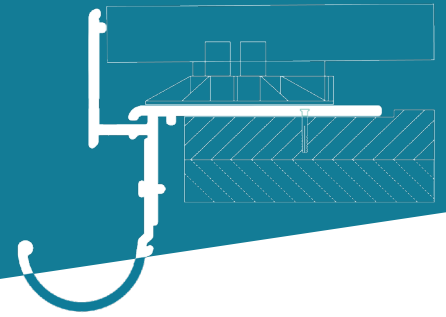


1. Right/left RK50 gutter stopends
2. R50 90/135 internal gutter angle
3. R50 gutter union
4. R50 gutter
5. R50 running outlet
6. R50 90/135 external gutter angle
7. R50 67/87 downpipe offset bend
8. R50 dia 40 mm, 50 cm long downpipe
9. R50 dia 40 mm downpipe clip

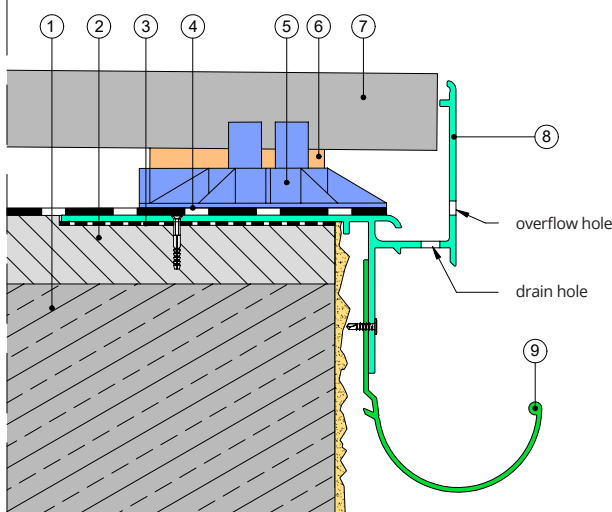
# Renoplast R50

## GUTTER SYSTEM

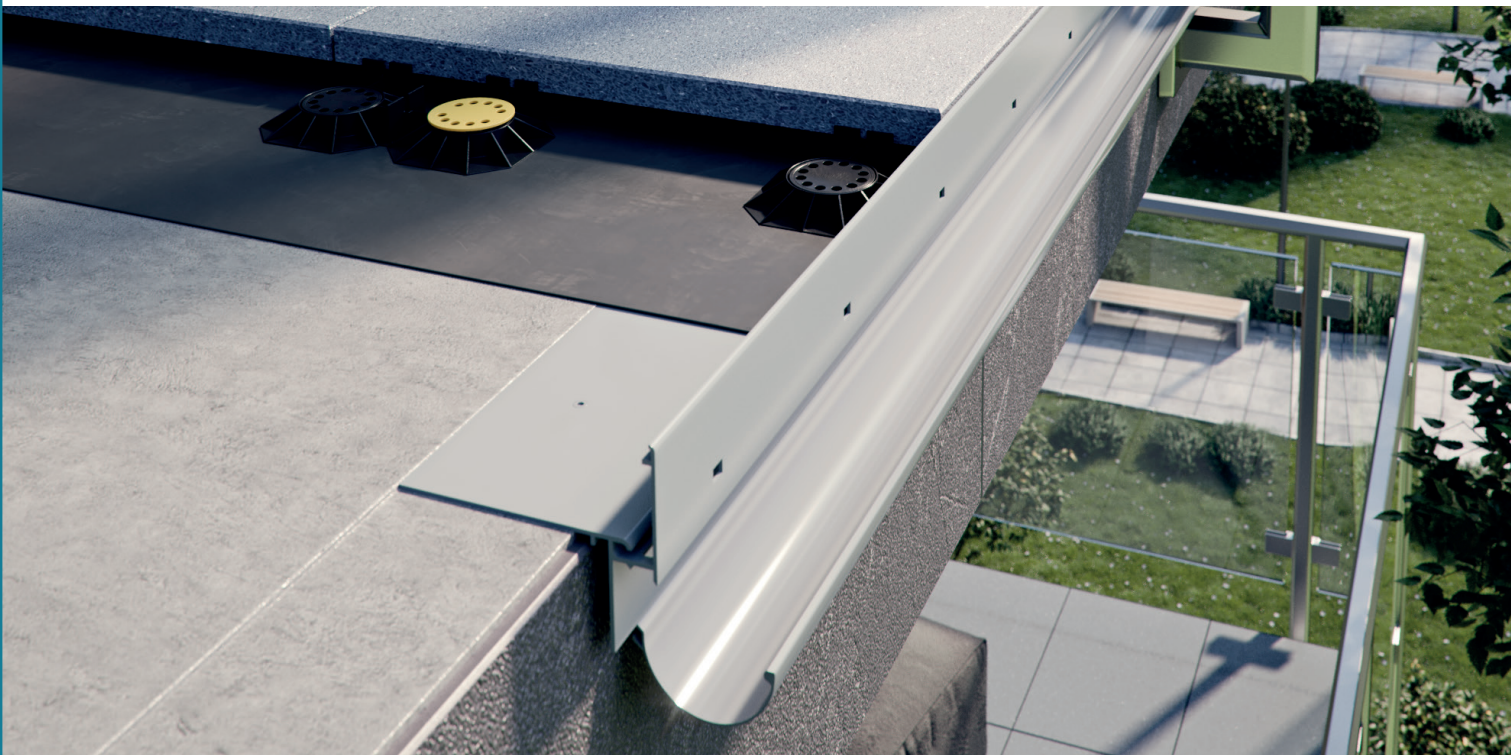
All components of R50 gutter system are compatible with the following RENOPLAST drip edges: K10R, K100R, K20R, K35, W35 PLUS, W30R PLUS, W60.



### INSTALLATION EXAMPLE



1. Structural slab
2. 1.5-2% sloping layer
3. Sealant adhesive
4. Waterproof barrier (e.g., EPDM)
5. SMART pedestal
6. Pedestal levelling disc
7. Paver
8. W35 PLUS drip edge
9. R50 gutter



#### Notes:

Edition: 4.05.2026. This product brochure supersedes all previous editions. It gives recommendations for standard application conditions only, and thus shall not be used in place of installation drawings. Suitability of our products for particular conditions should be verified by the contractor. The actual product specifications may vary slightly due to allowable process or tool dimension changes. Any materials used in combination with Renoplast products must be obtained from reputable sources. Our liability for any omissions or inaccuracies of the data given in this brochure is limited to gross disinformation and/or negligence.

Renoplast

RENOPLAST Sp. z o.o.  
phone: +48 697 635 580  
office@renoplast.pl  
www.renoplast.pl/en

