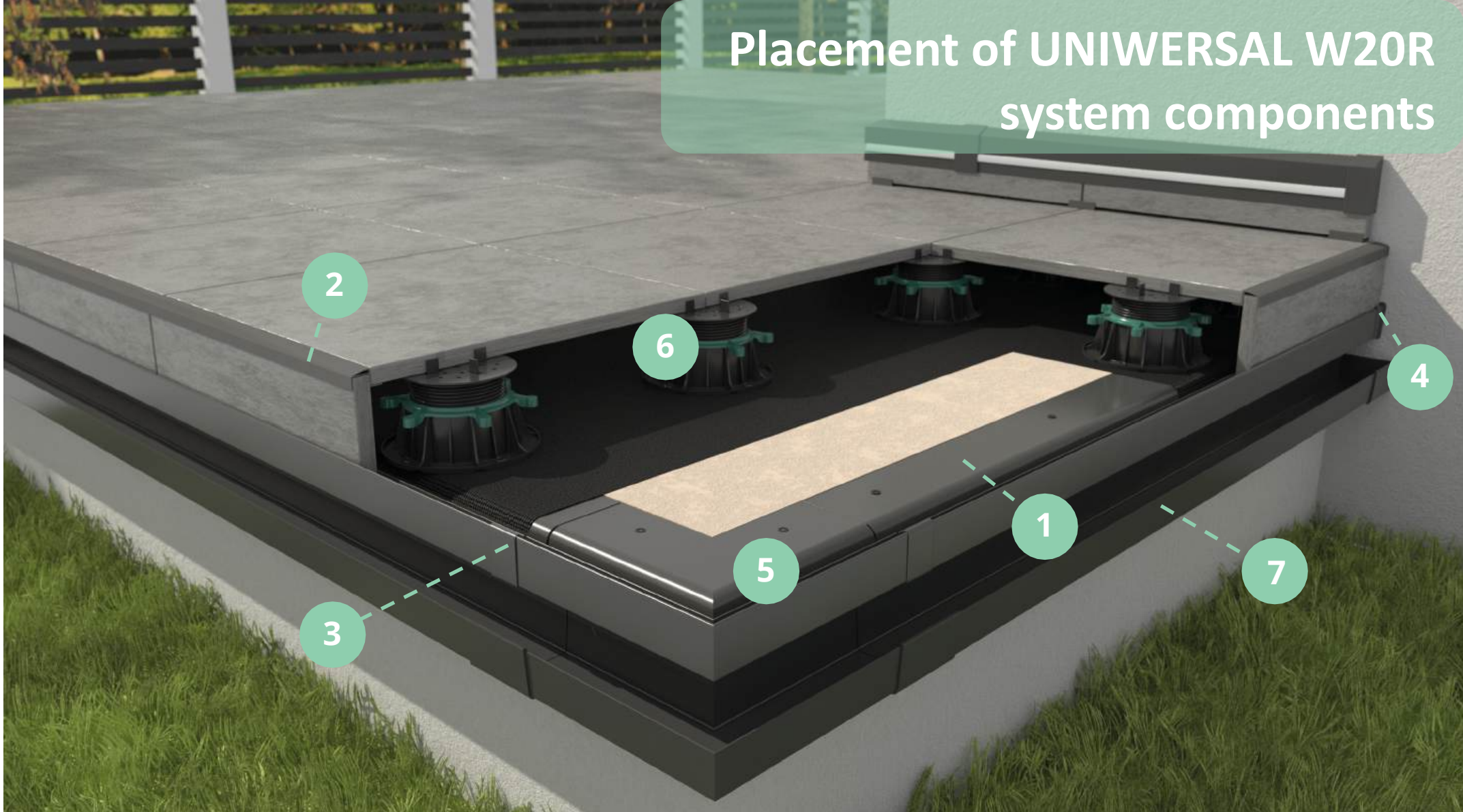


# UNIWERSAL W20R system

installation guide for balconies, patios and terraces surfaced with  
porcelain pavers resting **on RENOPAD PRO** pedestal system



# Placement of UNIWERSAL W20R system components



W20R drip edge  
200 cm length



1

W20Z fascia coping  
200 cm length



2

LW20/LW20R/  
LW35 PLUS  
LW35 PLUS  
drip edge clip



3

OPW20/OPW20R/  
OPW35 PLUS R+L  
wall protection end caps



4

W20R 90 external  
corner



5

RENOPAD PRO  
Pedestal

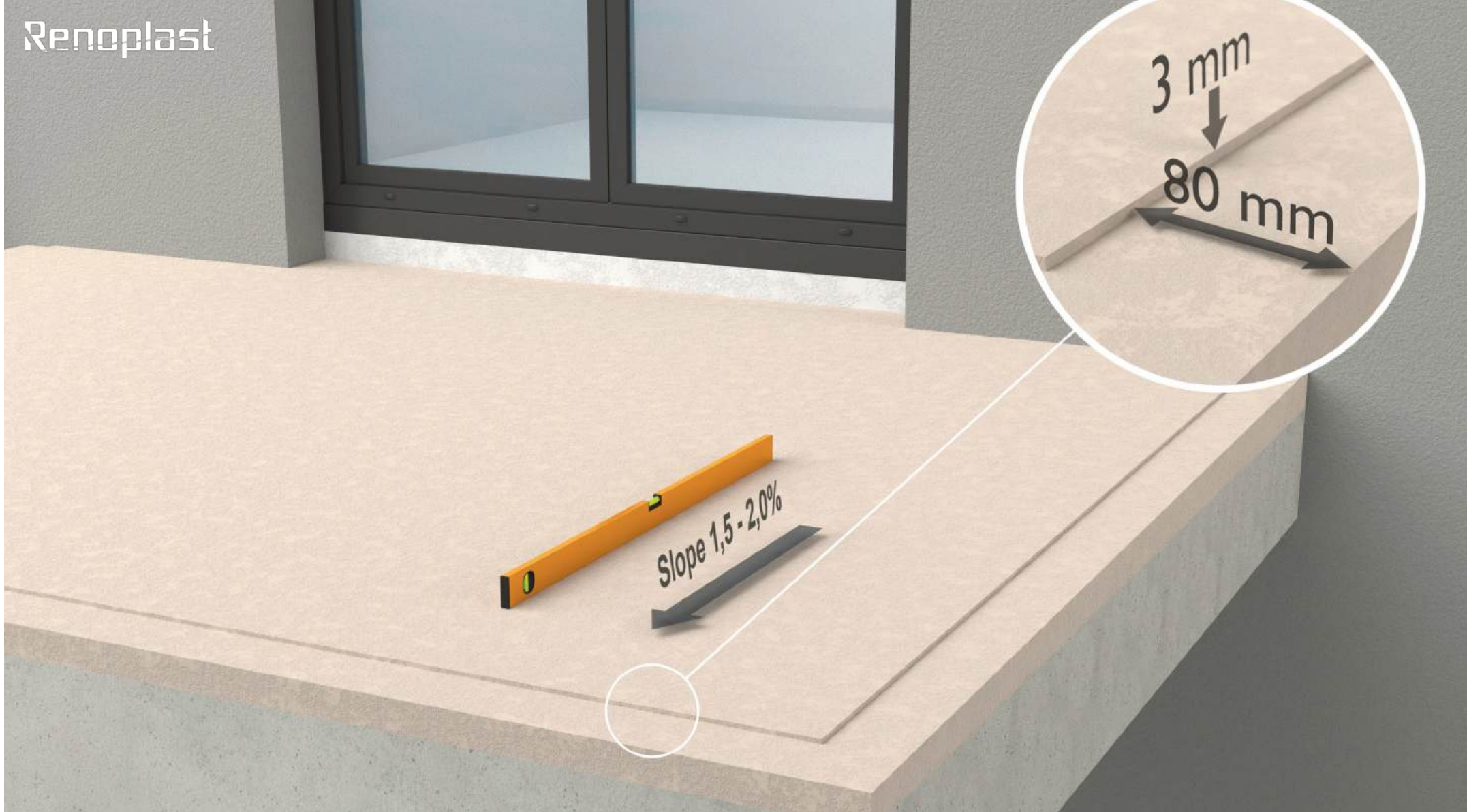


6

RK65  
Box gutter



7



### Balcony/terrace floor screed

The floor screed should be structurally sound and even, sloping 1.5 – 2% towards the balcony/terrace front edge. Along the balcony/terrace edge a 3 mm deep by 80 mm wide recess should be made in the screed to allow setting the drip edge flush with the screed top surface.



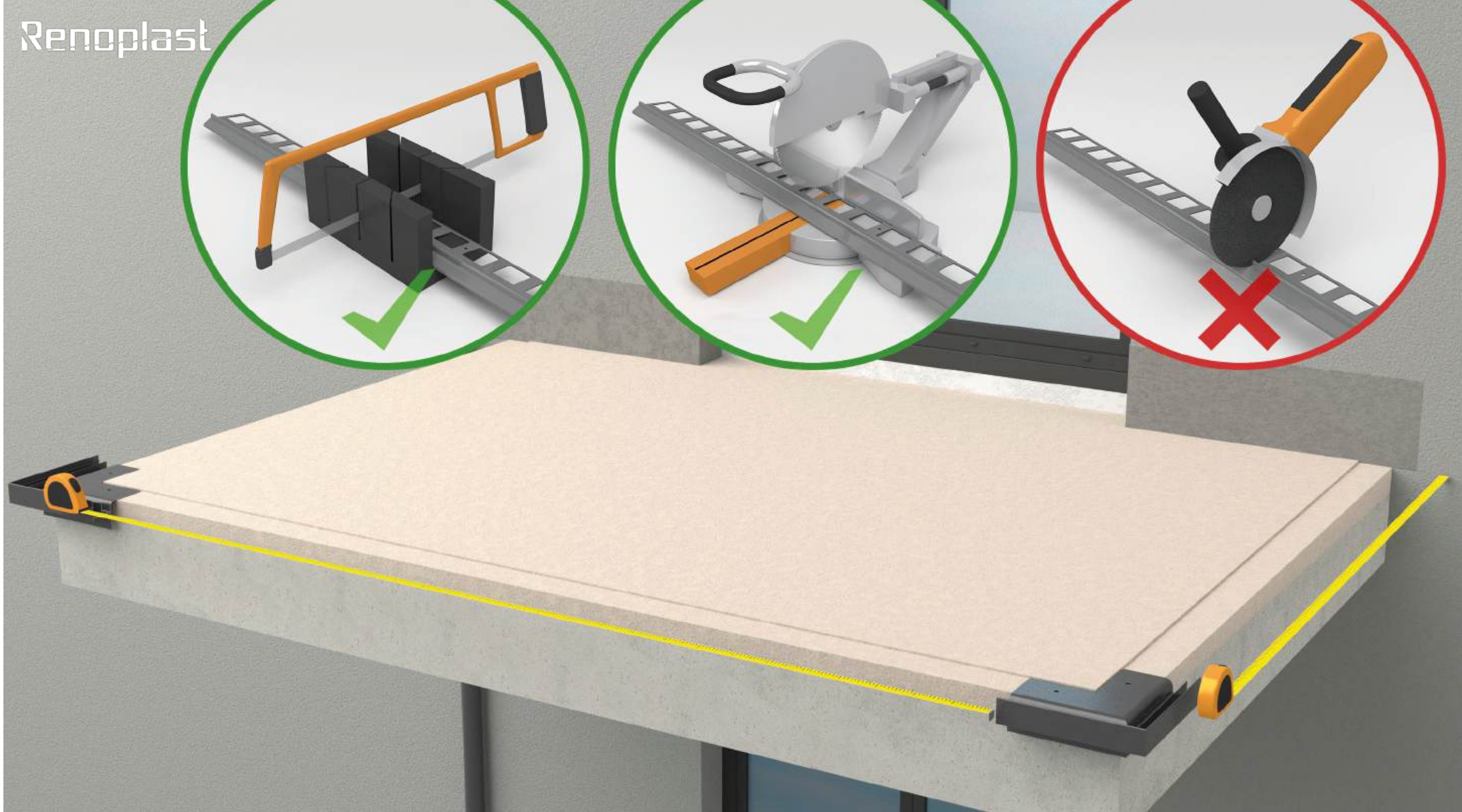
### **Smoothing the wall for membrane upstand installation**

An appropriate smoothing compound should be applied to 15 cm above the floor slab to provide smooth and sound substrate for bonding the waterproofing membrane upstand.



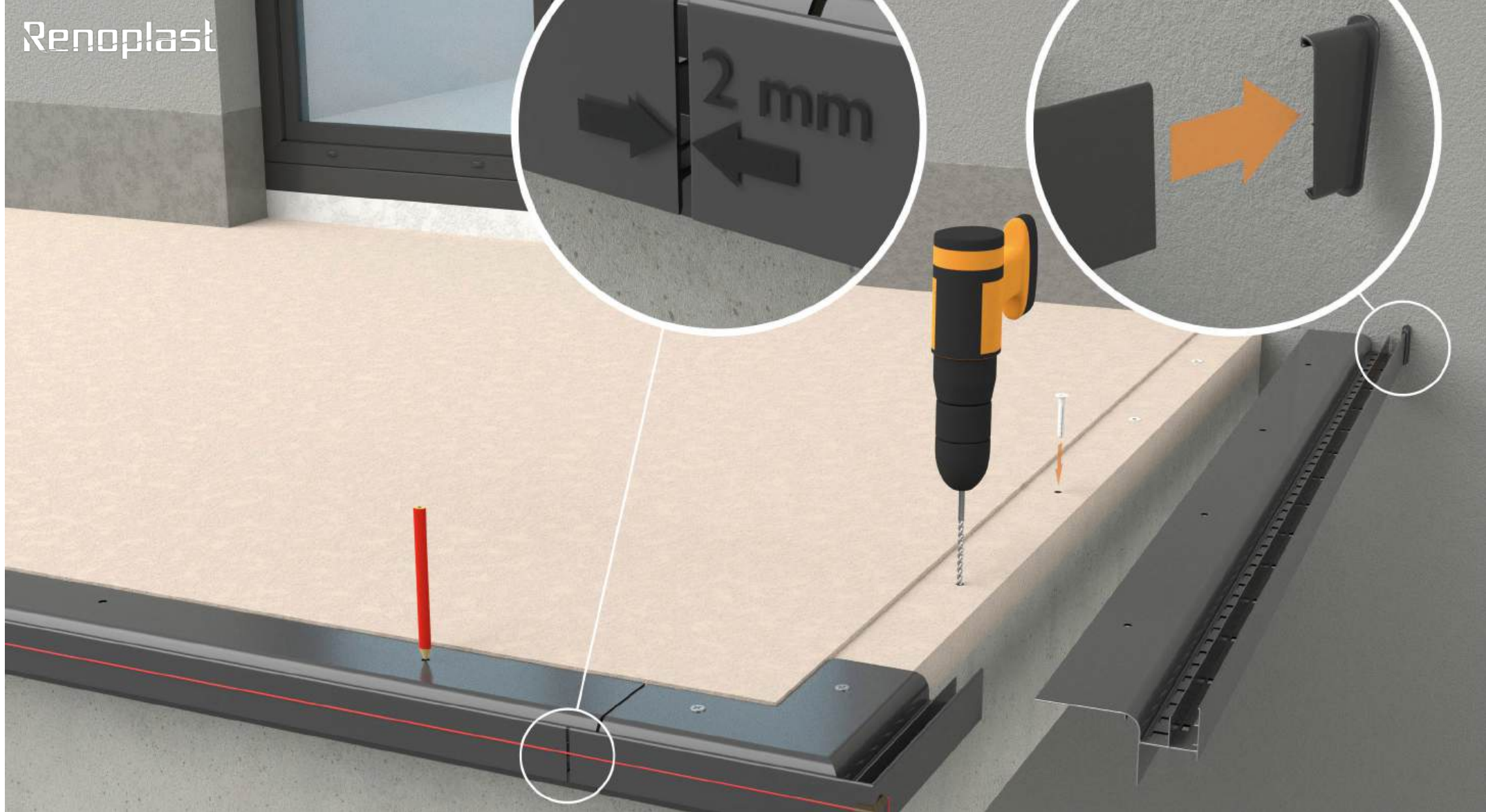
### **Pre-fitting W20R 90 external corners**

Start the installation by pre-fitting the external corners using the supplied plastic wall plugs.



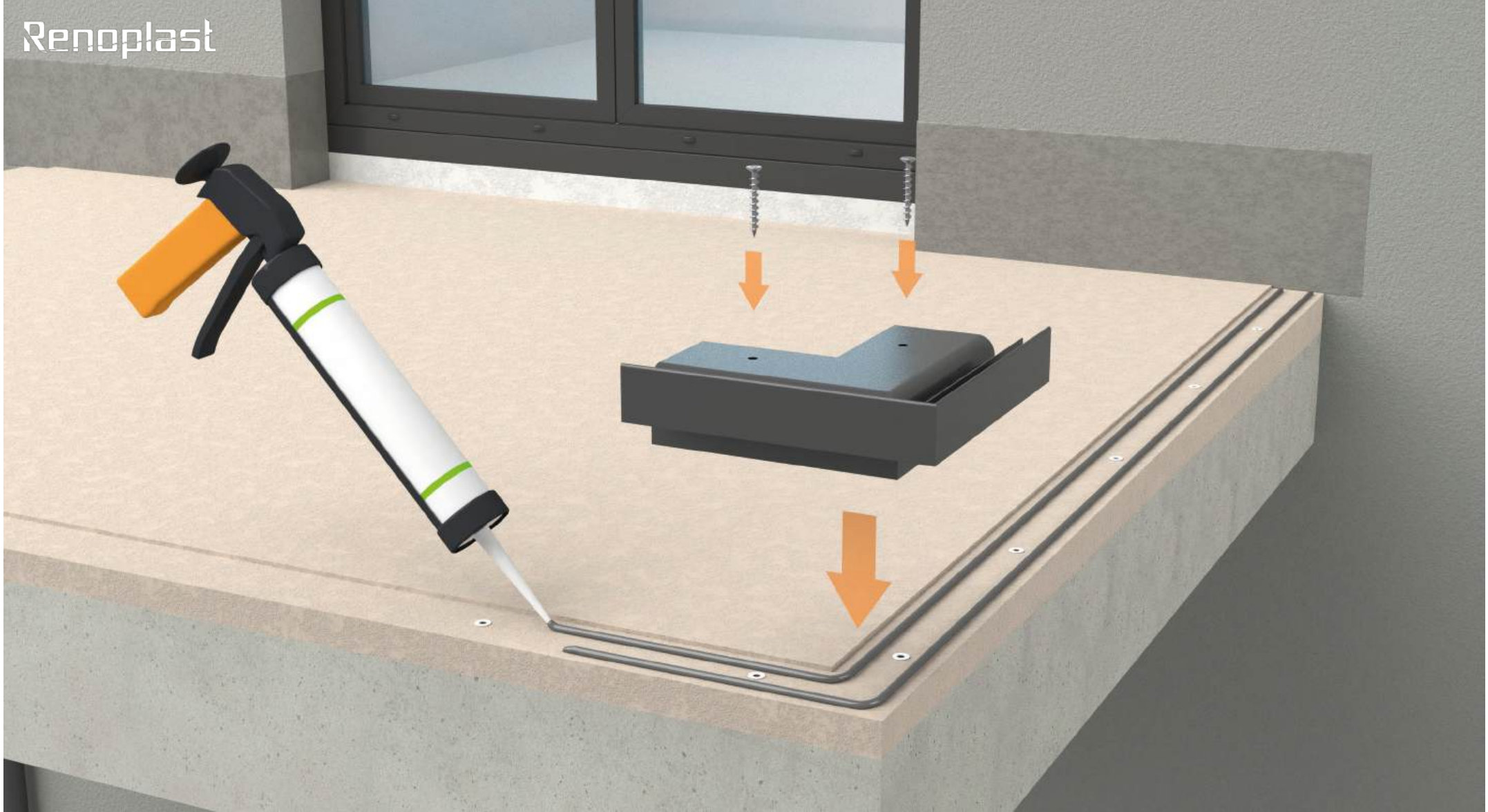
### Preparation of W20R drip edges

Measure straight lengths to cut the straight sections to the required length. Allow for ca. 2 mm wide expansion joints between adjacent drip edging sections. At walls leave sufficient space for fitting **OPW20/OPW20R/OPW35 PLUS wall protection end caps**. For cutting use a metal handsaw or a circular saw equipped with an aluminium cutting disc. Other tools may damage the paint coat, which is considered unacceptable.



## Making fixing holes in the screed

Lay **W20R drip edges** between the pre-fitted **W20R 90 external corners** and mark fixing holes positions. Remove the drip edging to drill fixing holes in the screed.



### Fixing of W20R 90 external corners

External corners should be placed on a bed of sealing slurry and mechanically fixed using the pre-installed plastic plugs. Once the slurry has cured, tighten the plug screws as required.



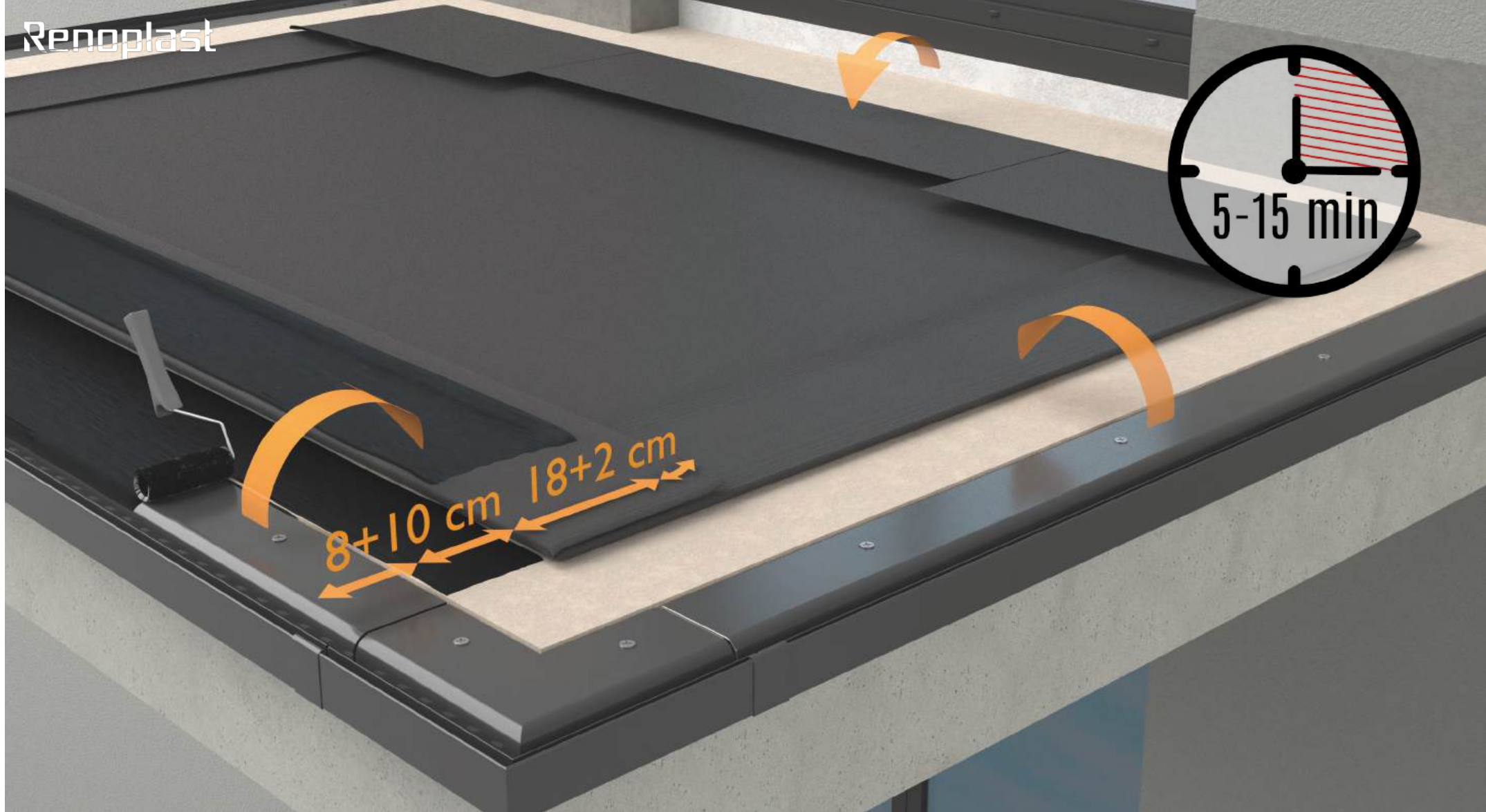
### Fitting of W20R drip edges

Straight sections are fitted in the same way as corner pieces. Use a string line stretched between adjacent corners and a spirit level to ensure straight and level alignment.



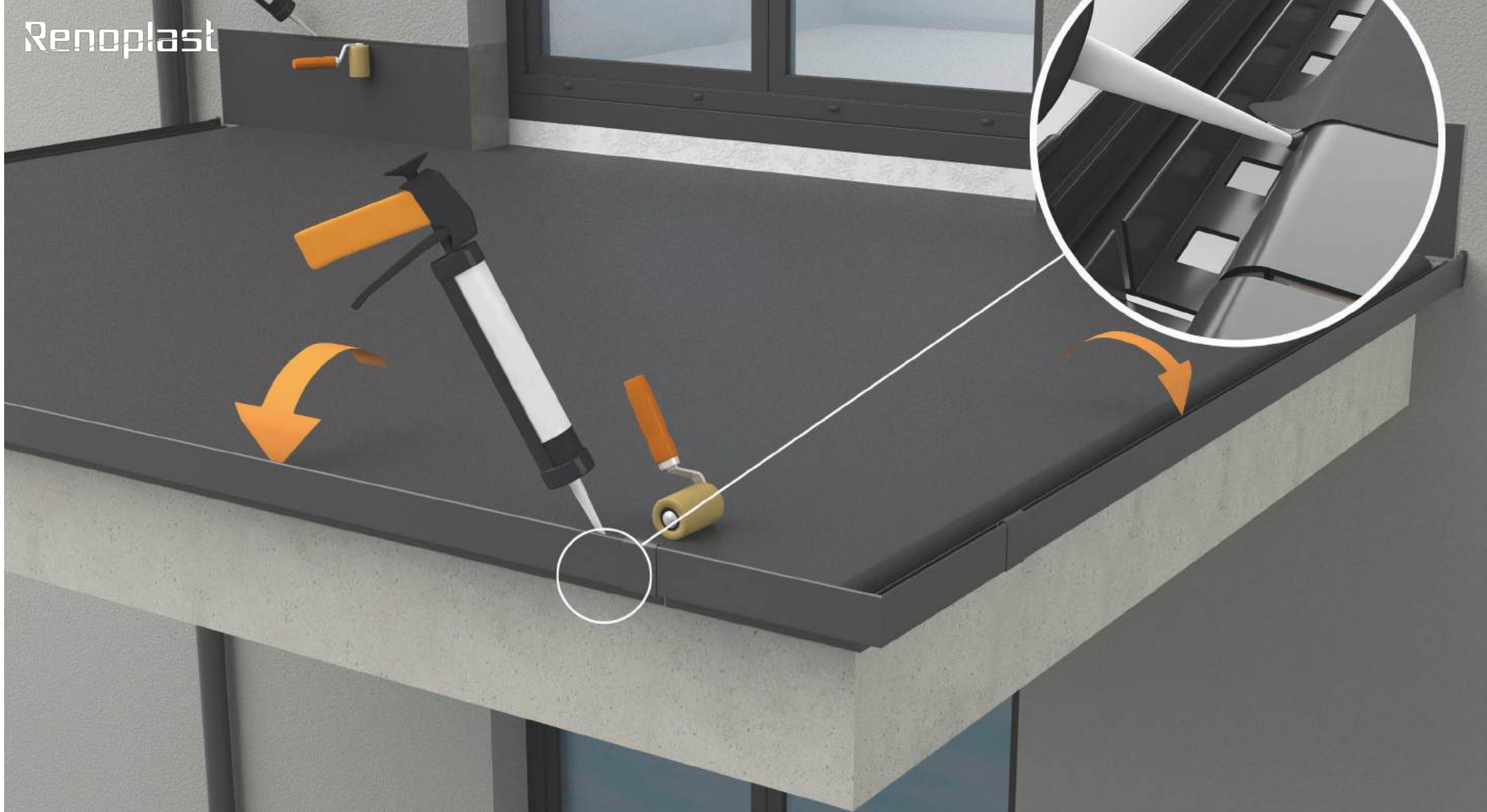
### Renoplast EPDM membrane installation - preparation

Lay out the **Renoplast EPDM membrane** over the base and leave the membrane to relax for about 60 minutes to allow it expand naturally and remove any creases. Next cut the membrane to size, adding the drip edge bonding strip, wall upturns and laps between adjacent strips.



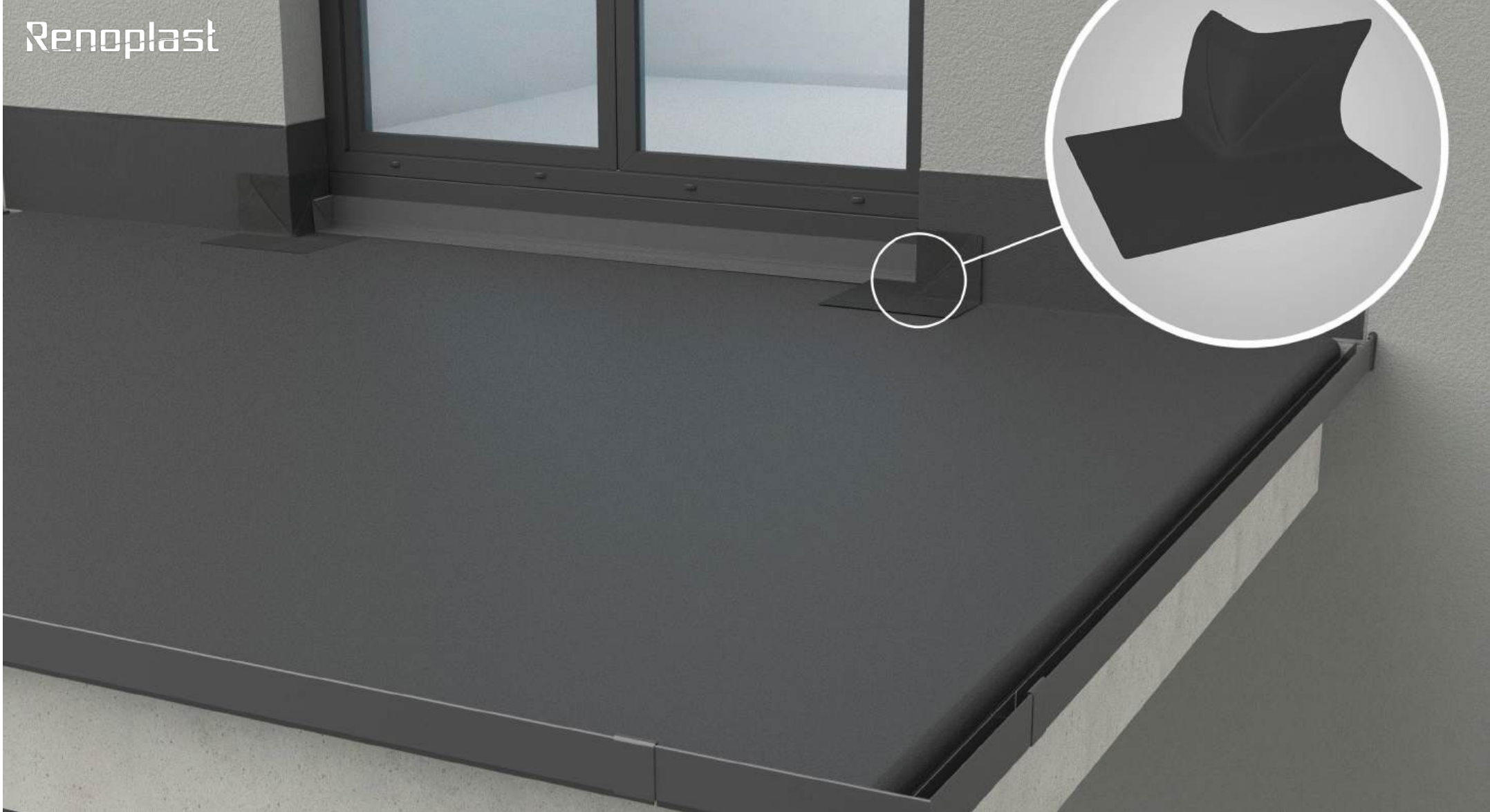
### Bonding Renoplast EPDM membrane to substrates

For bonding **Renoplast EPDM membrane** to substrates use **RENOSTICK RS 10**. Apply the adhesive around the **Renoplast EPDM membrane** perimeter over a 20 cm wide strip, over the entire upstand width and onto the mating surfaces of **W20R drip edges** and **W20R 90 external corners**. Apply the adhesive on both the membrane and on the substrate. Wait for ca. 5-15 minutes and then press the membrane against the substrate with a hand roller.



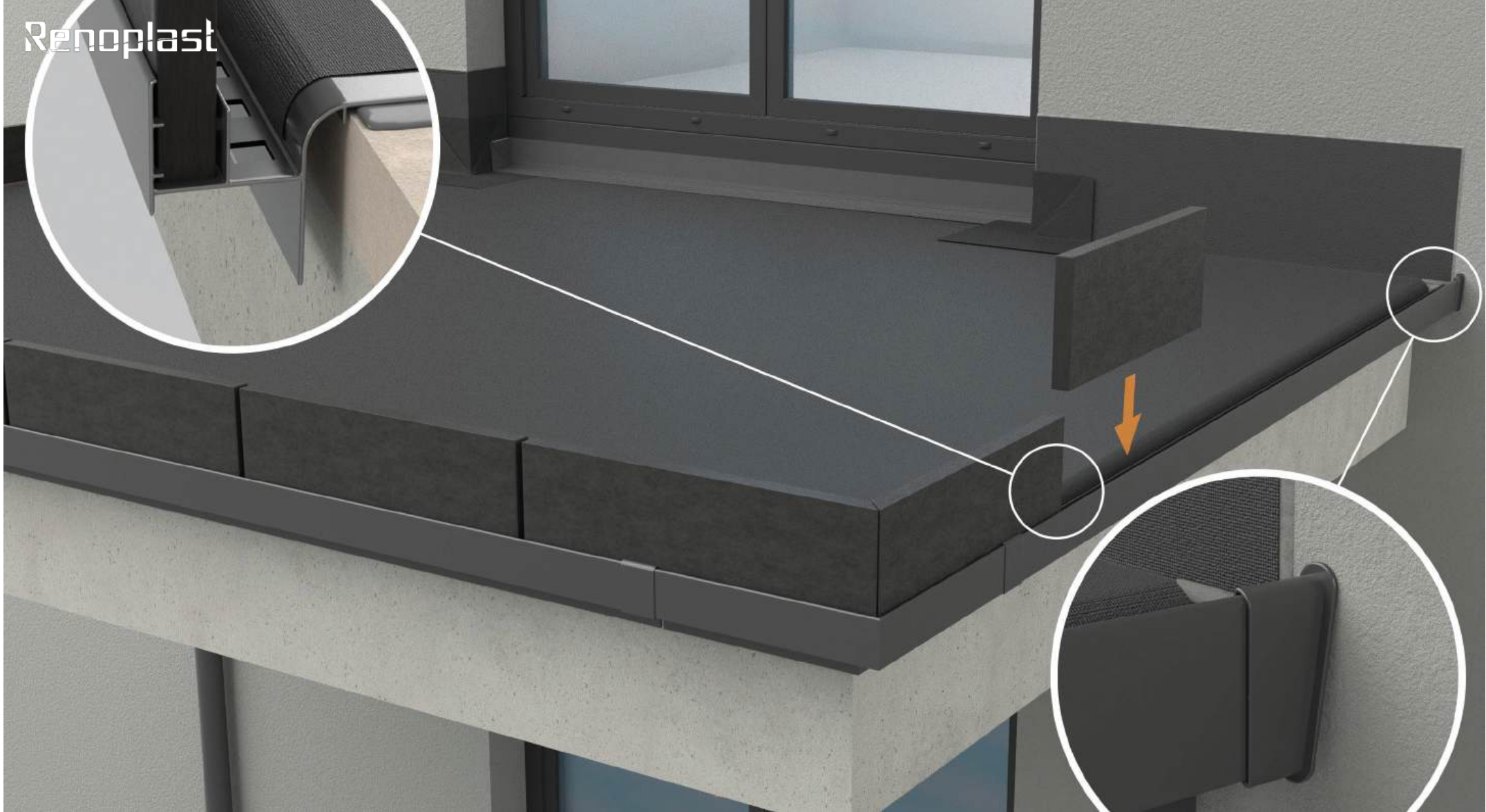
### Sealing of Renoplast EPDM membrane joints

Upturn a ca. 2 cm wide strip along the membrane edges high, apply flexible sealant and press firmly the membrane against the substrate until the sealant starts to squeeze out. Remember to seal both the membrane laps and drip edge joints.



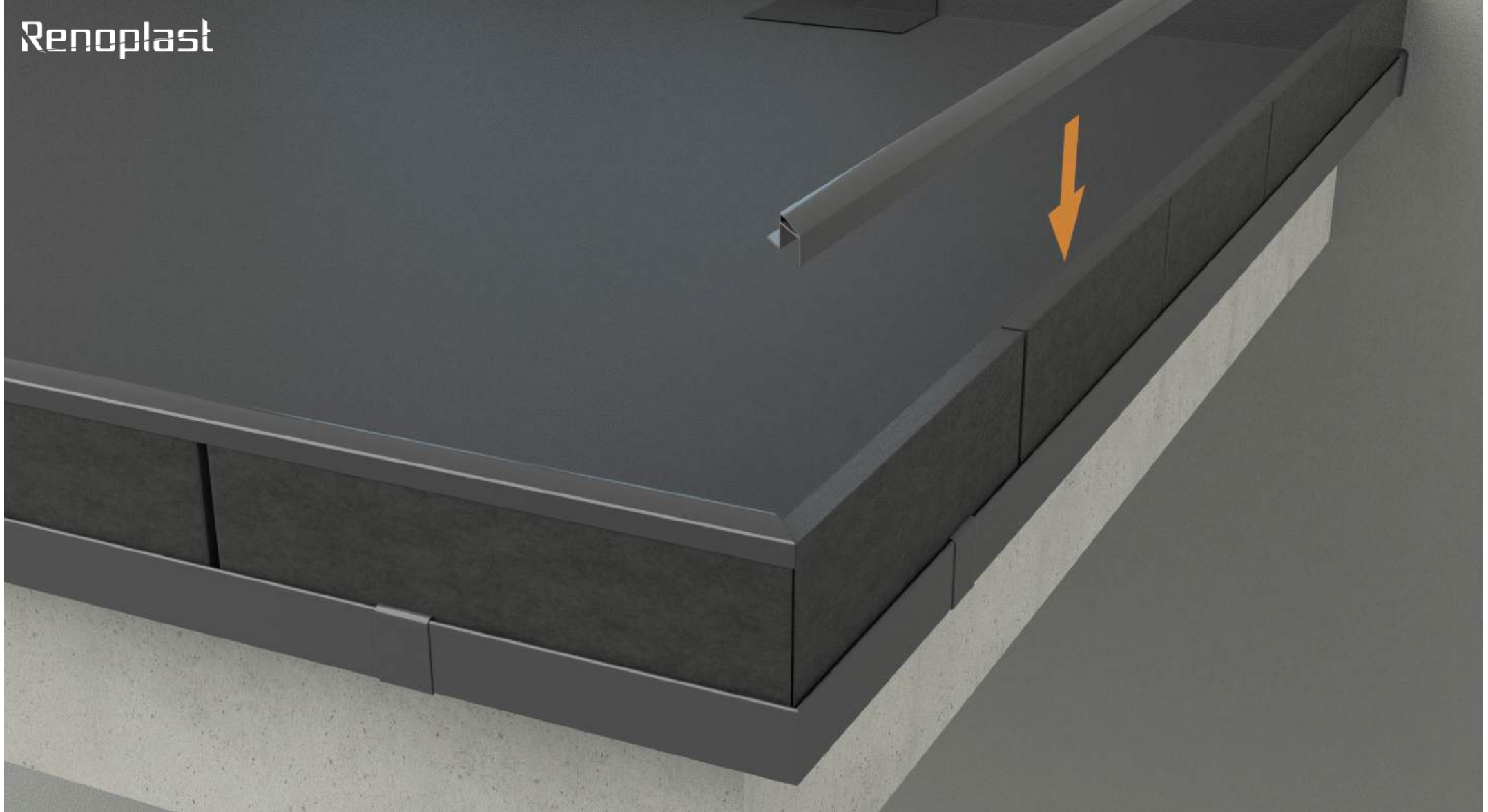
### Sealing of doorway and doorsill joints

At bottom doorway corners fit preformed **EPDM external corners**. Use **RENOSTICK RS 10** for bonding the corners and then apply adhesive sealant at joints. The joint between **Renoplast EPDM membrane** and doorsill edge should be sealed with mesh reinforced **self-adhesive EPDM tape with butyl strip**.



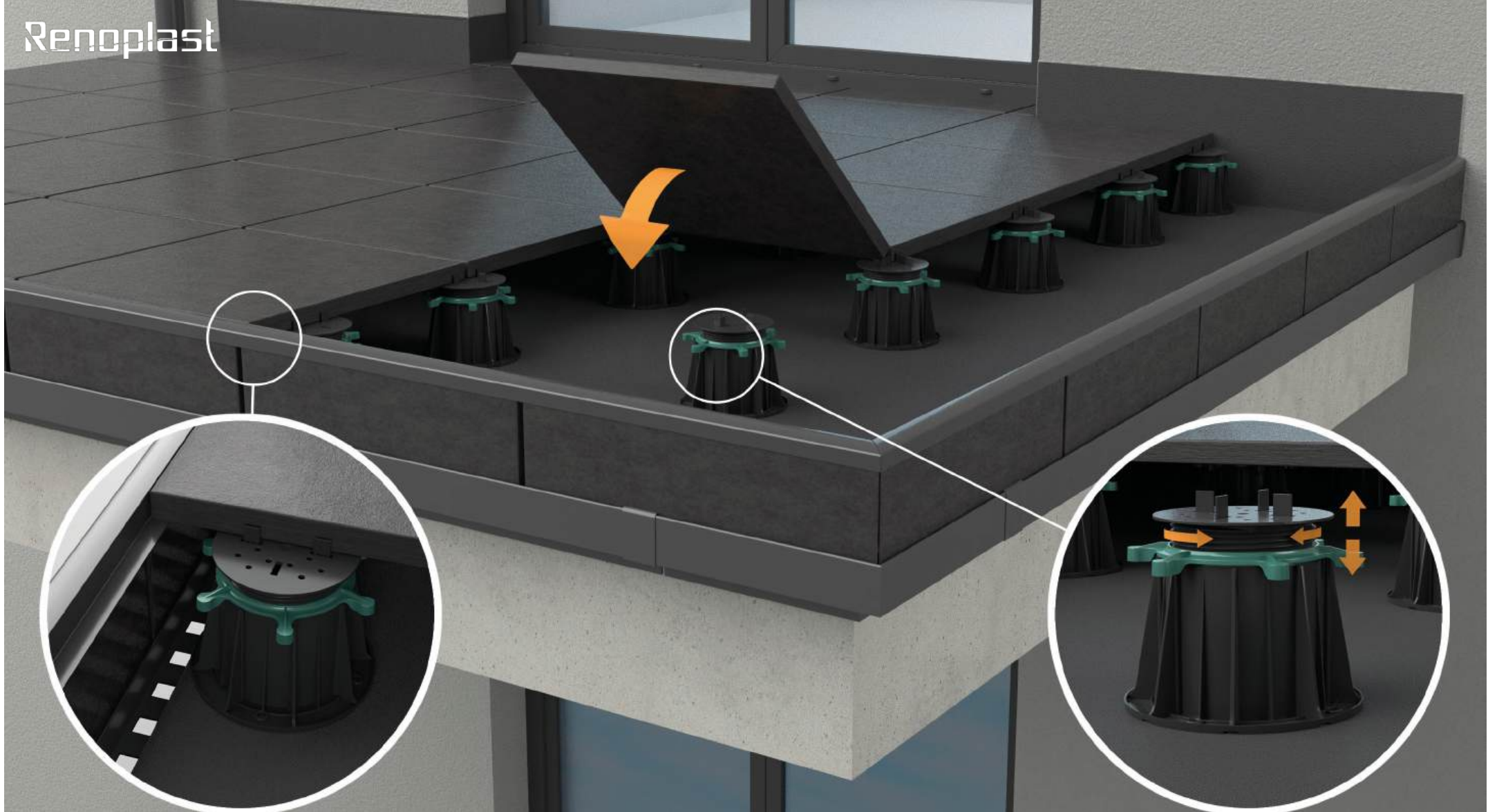
### Fitting fascia panels into W20R drip edge

The fascia of terrace, patio or balcony may be finished with 20 mm thick porcelain tiles, cement fibre or HPL boards cut to width corresponding to the floor height (see eaves cross-section example for details). The fascia panels obtained in this way are inserted into **W20R drip edge** channel.



### Trimming the fascia with W20Z copings

The fascia is finished with **W20Z coping trims** inserted from the top.



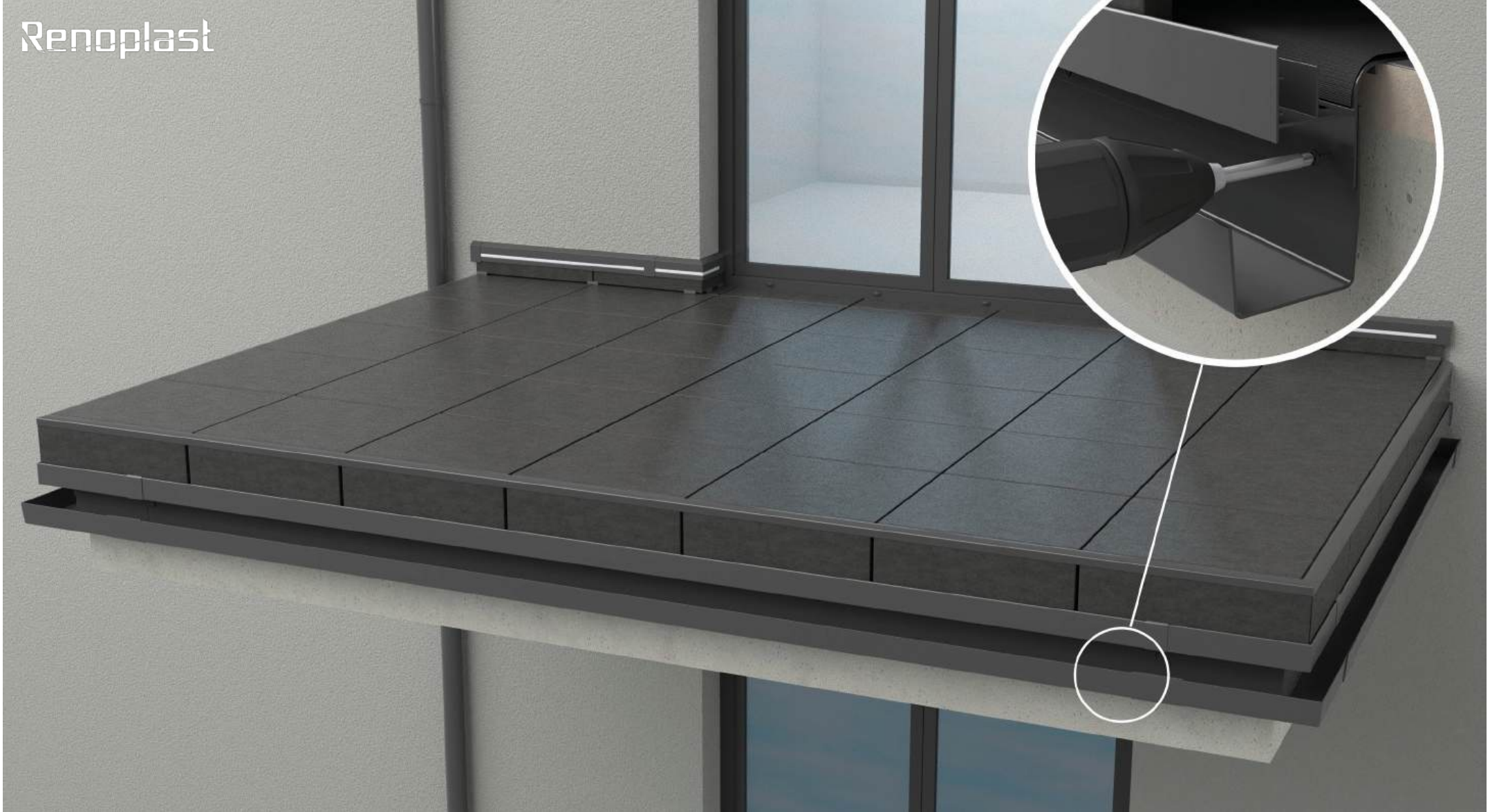
## Paving with the use of RENOPAD PRO pedestals

The pavers are laid on **RENOPAD PRO** pedestals. Use appropriate paver support pads depending on the finished floor height and intended inclination. The layout and number of support points depends on the size of the chosen pavers.



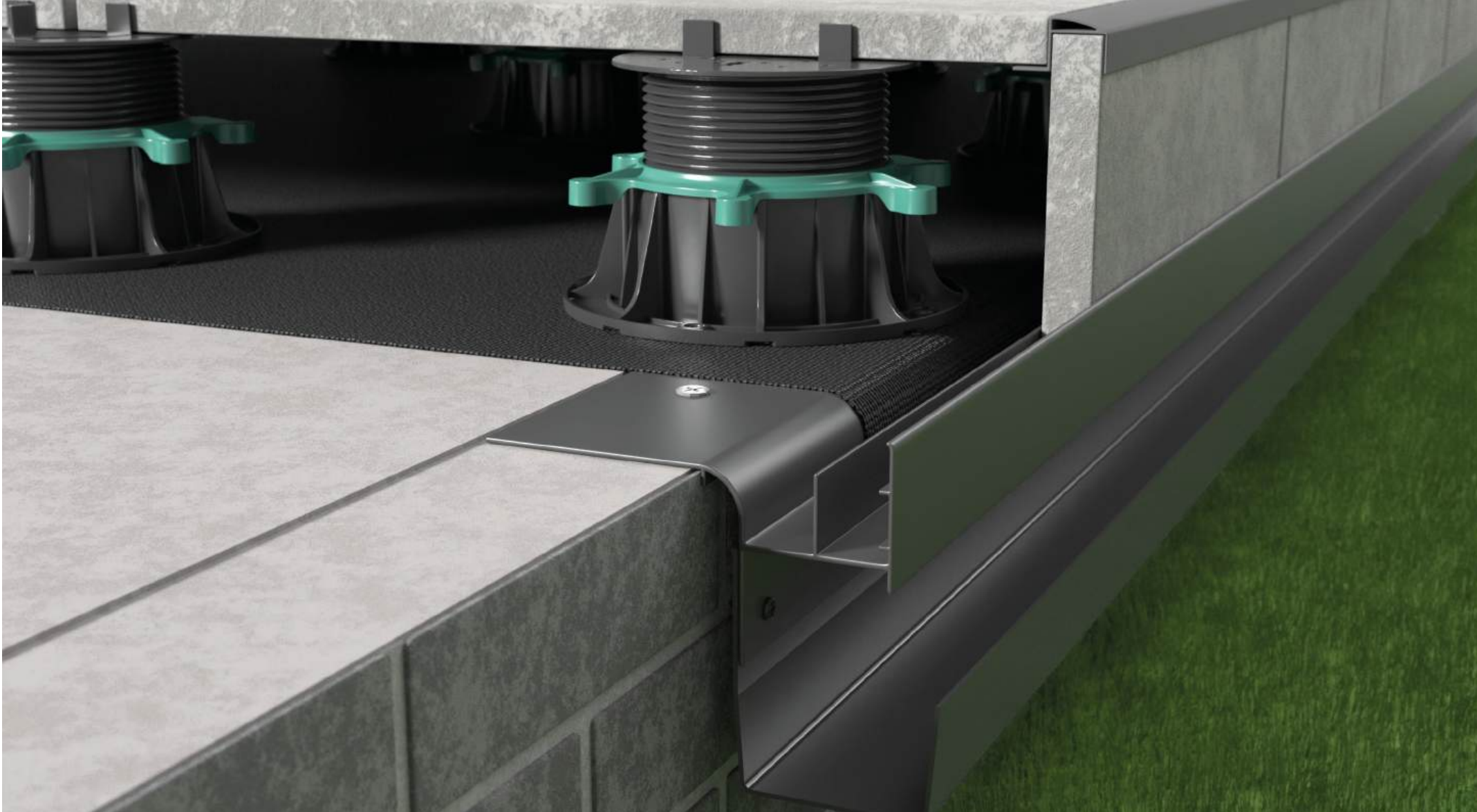
## C1/C2 skirting installation

Start by mechanically fixing the **C1** base rail to the wall at the membrane upstand top edge level as the membrane termination bar. Along the top edge of **C1** base rail apply elastic polyurethane sealant and lay skirting tiles. Next snap the **C2** top trim, including corners and clips. Finish the skirting installation by inserting the plastic strip into the **C2** groove. LED strip may also be fitted in the **C1** skirting to illuminate the floor.



## Installation of Renoplast RK65 aluminium gutter system

**RK65** aluminium gutters are fixed directly to the fascia cover under **W20R drip edge**. Both the straight segments and angles should be fixed with the supplied self-drilling fasteners. Snap **LRK65** clips over all joints.

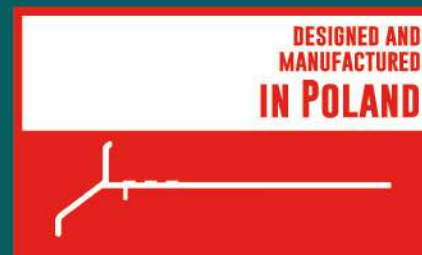


## NOTES:

In **W20R drip edges** the drain holes are positioned below the waterproofing layer to ensure efficient drainage of water balcony/terrace floors. **W20R** gives a neat fascia finish with 20 mm thick fascia panels.



**QUALICOAT**  
Inspired by architecture, trusted by professionals  
| SEASIDE |



**Renoplast**

[www.renoplast.pl/en](http://www.renoplast.pl/en)