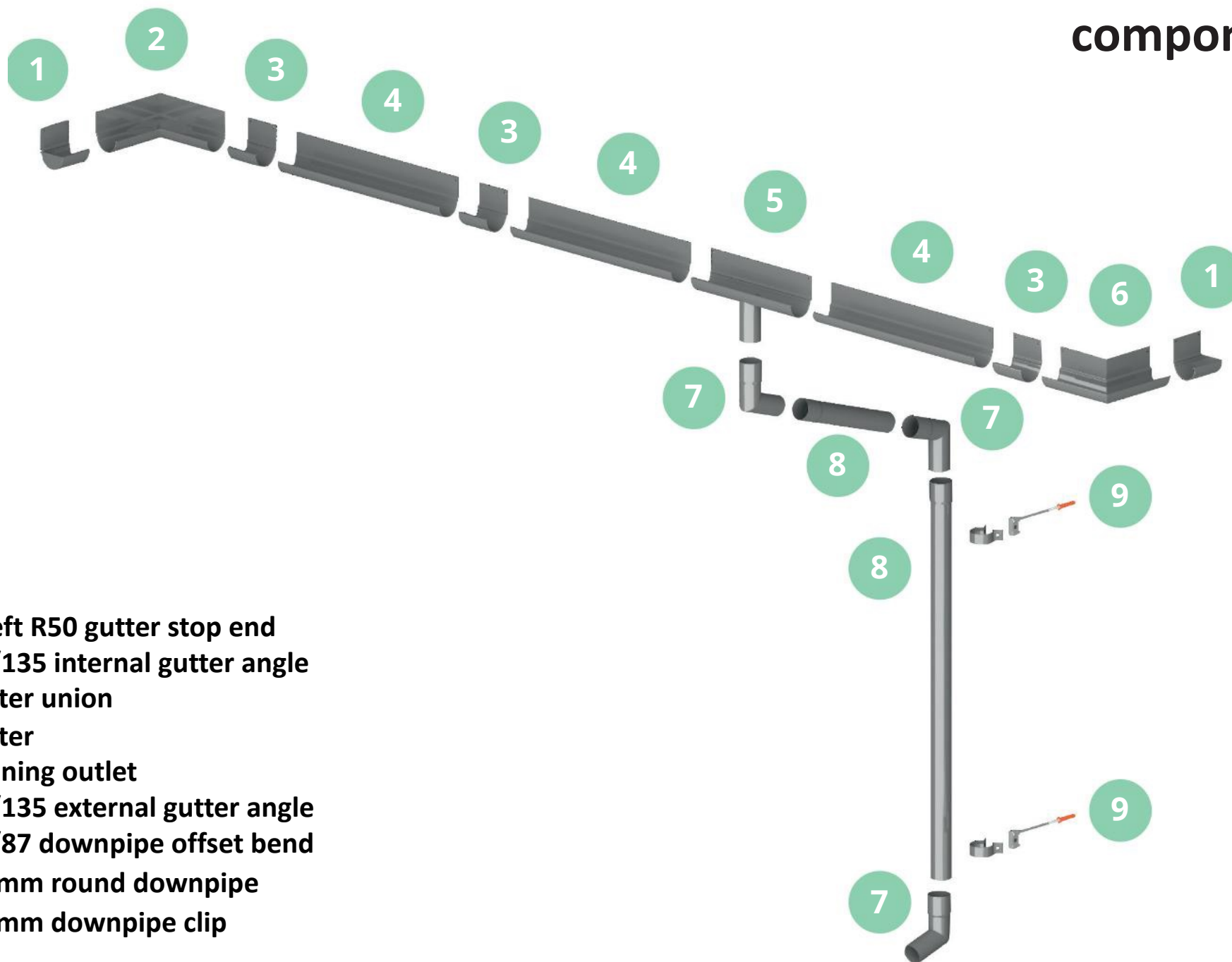


RENOPLAST R50 gutter system installation guide for patios/terraces with Renoplast drip edges



Placement of R50 gutter system components



1. Right/left R50 gutter stop end
2. R50 90/135 internal gutter angle
3. R50 gutter union
4. R50 gutter
5. R50 running outlet
6. R50 90/135 external gutter angle
7. R50 67/87 downpipe offset bend
8. R50 40 mm round downpipe
9. R50 40 mm downpipe clip



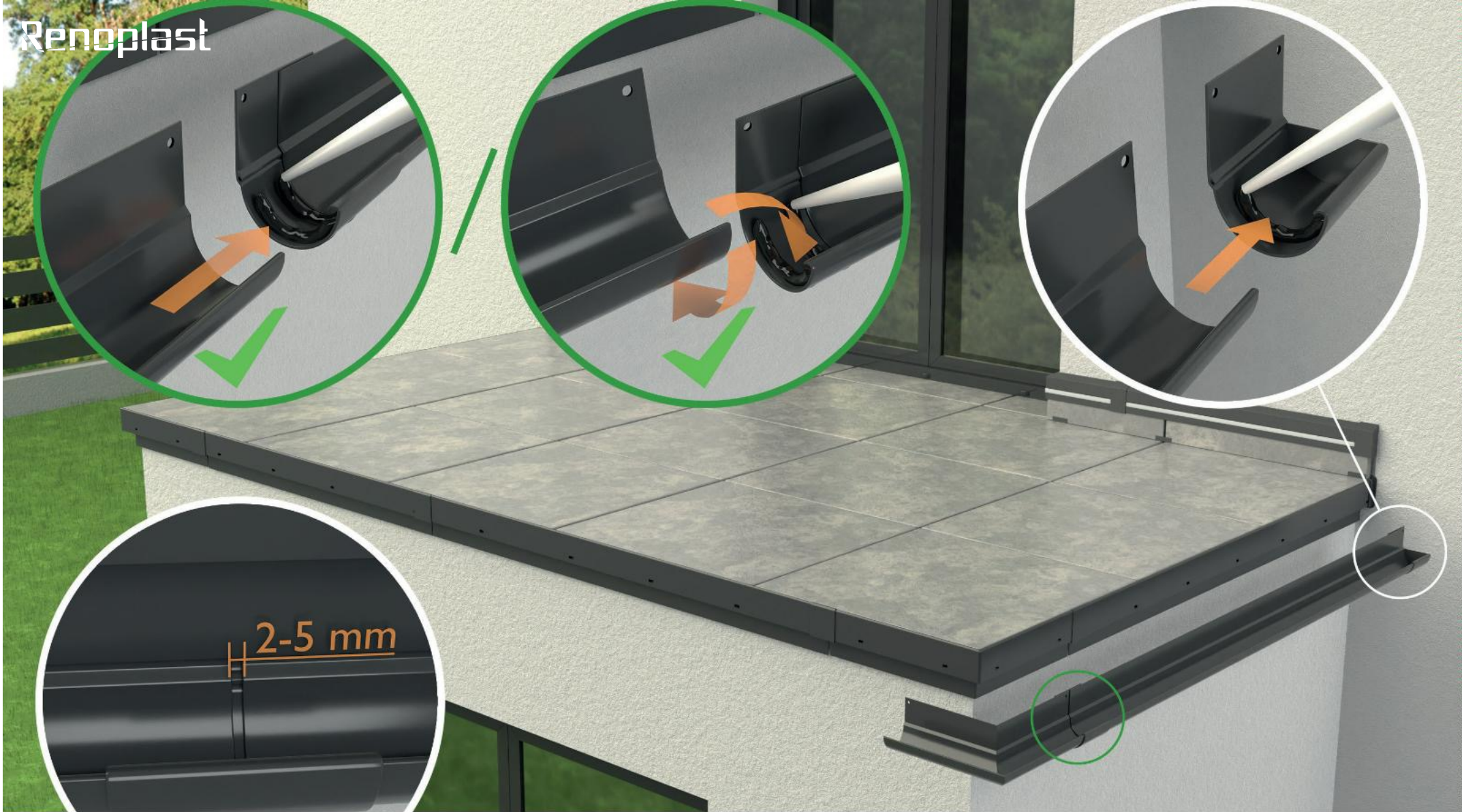
Preparation for installation

On the terrace/patio or balcony finished with **K10R**, **K20R**, **K35**, **K100R** or **W35 Renoplast drip edges** measure the length of the side where you have planned **R50 gutter** installation and choose running outlet position(s), for example on the terrace front, as shown in the above picture. Two outlets are required for up to 20 m² surface area, increased to three for terraces/balconies greater than 40 m², etc.



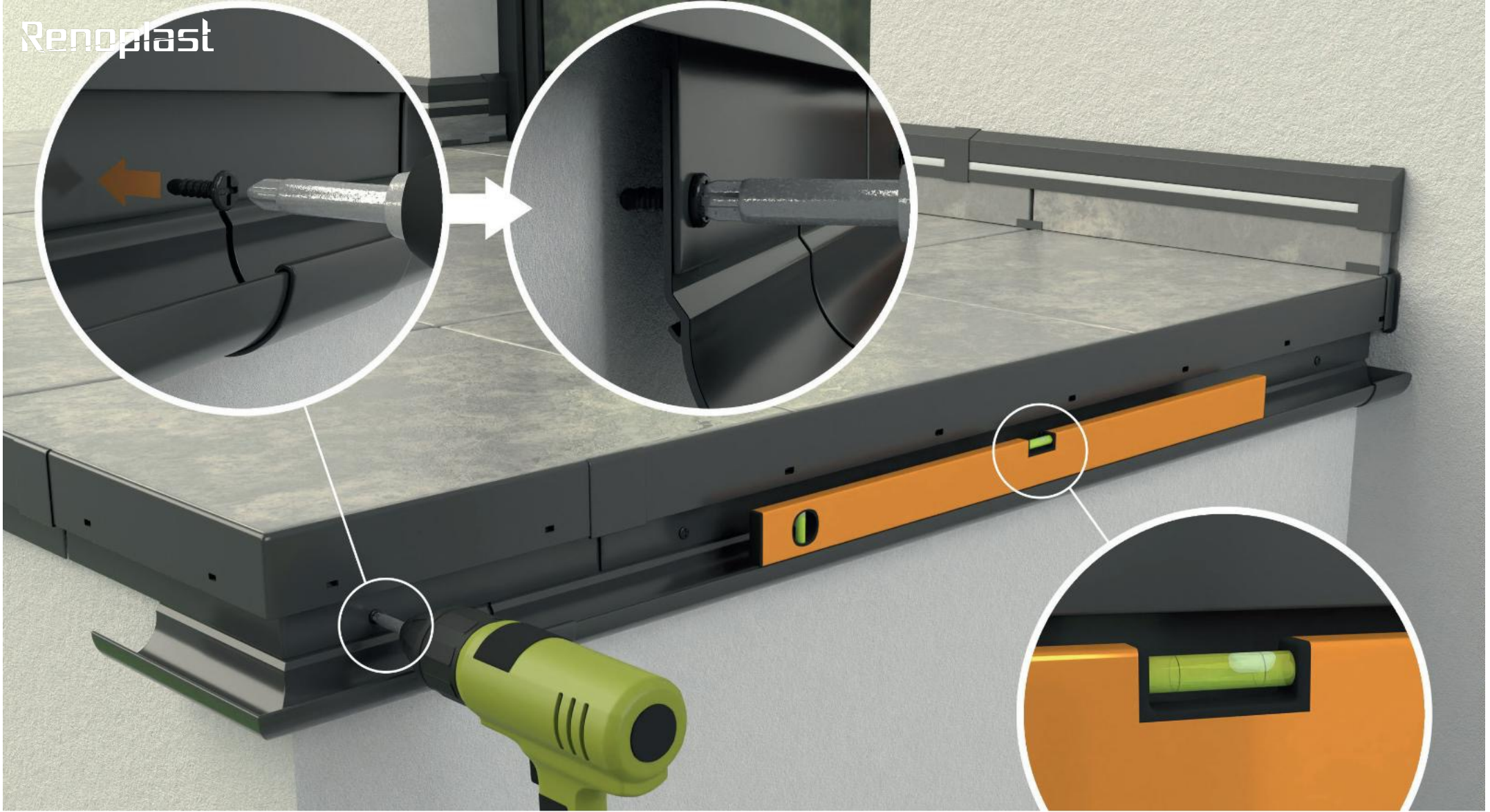
Preparation of R50 gutter lengths

Measure straight runs to cut the gutters to the required length. Allow for ca. 2-5 mm wide expansion joints between adjacent gutter lengths. For cutting use a metal handsaw or a circular saw equipped with an adequate aluminium cutting disc. Other tools may damage the paint coat, which is considered unacceptable.



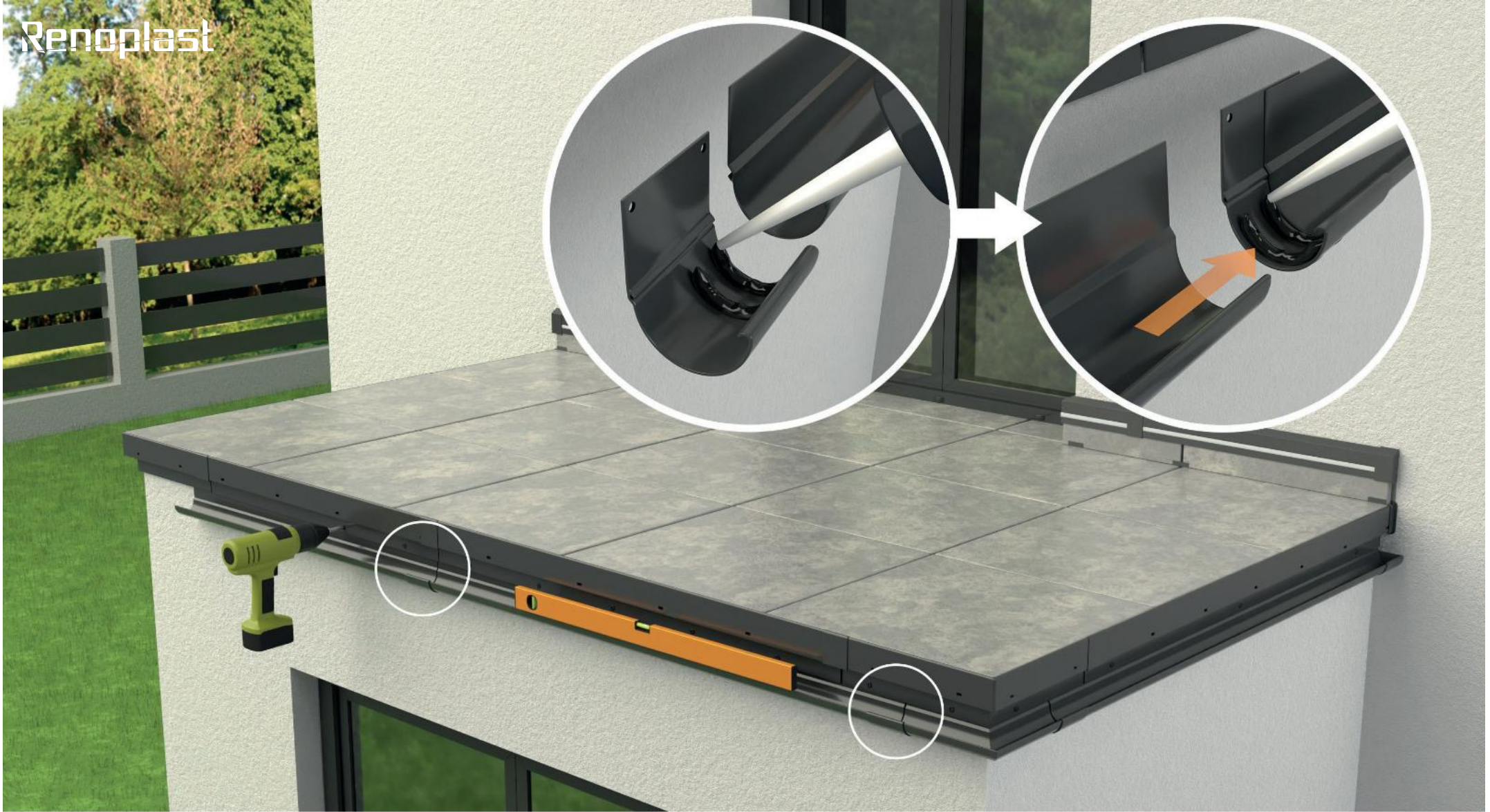
Connecting R50 gutter lengths, corners and unions

Gutter lengths are connected together with unions. To make a connection apply an elastic (for example polyurethane) sealant on the union inner surfaces and connect the elements together leaving a 2-5 mm gap between them.



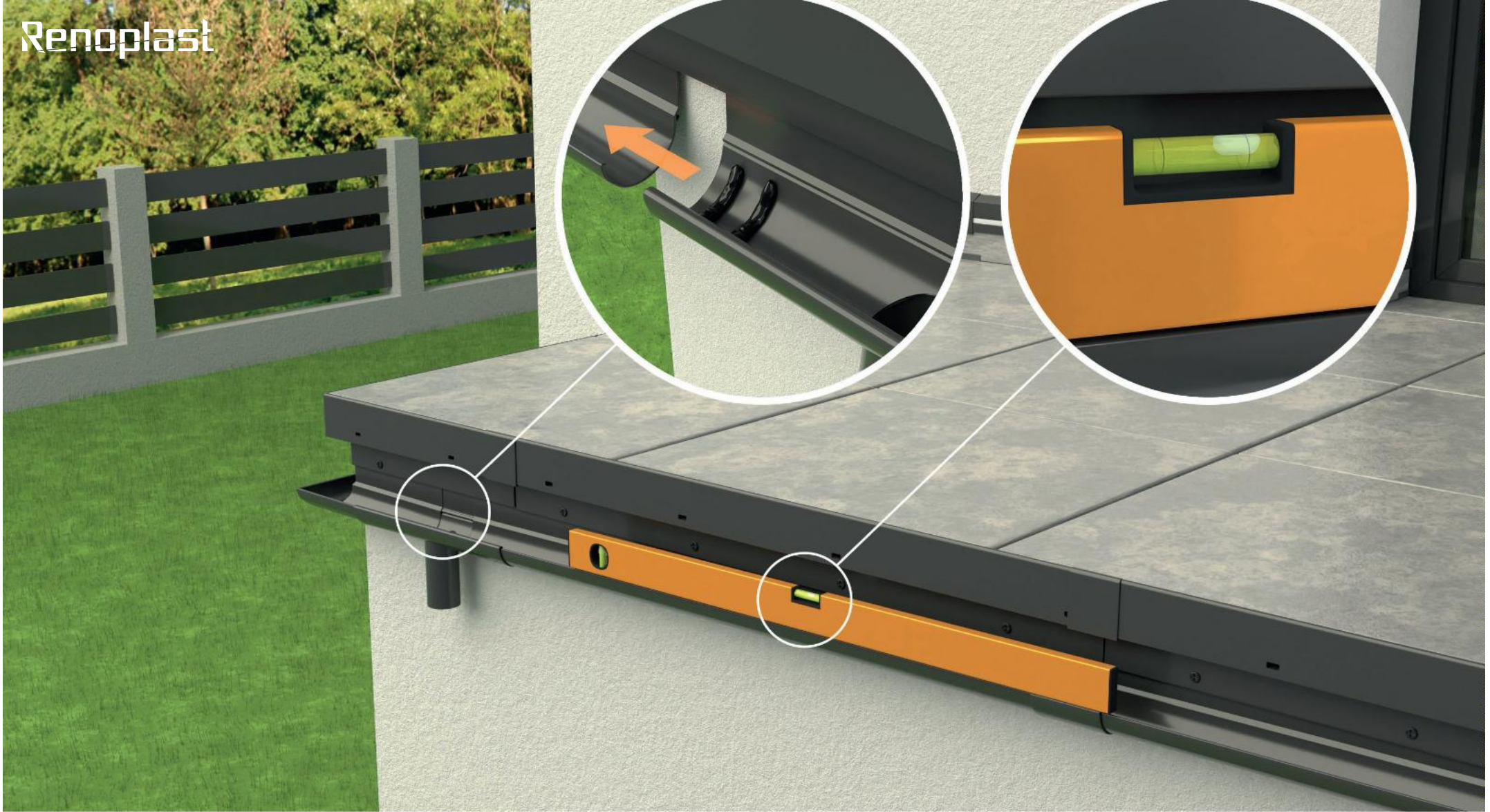
Fixing the first section of R50 guttering

Insert the previously assembled gutter section under the drip edge apron, adjust the slope as required, and secure the gutter assembly using the supplied self-drilling fasteners.



Fixing next sections of R50 guttering

The next sections are installed in the same way.



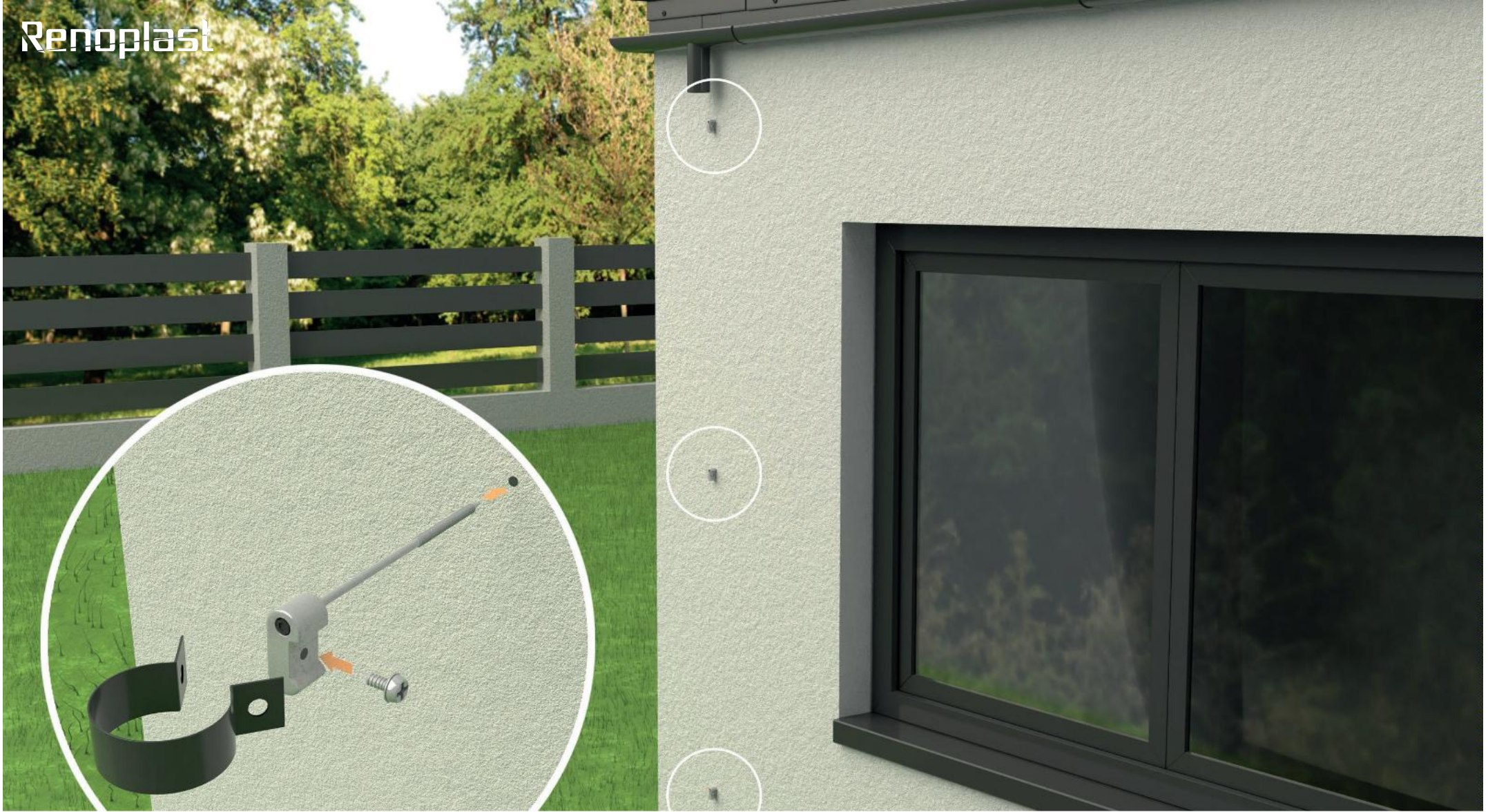
R50 running outlet installation

The gutter running outlet should be installed at the lowest point along the gutter.



Gutter installation instructions

Short lengths should be fixed at least at 2 points. The outermost fixing points should be spaced by max. 20 cm from the gutter edge. Guttering joints should not be located more than 20 cm from the drip edging joints. Avoid fixing one guttering length to two different drip edging sections.



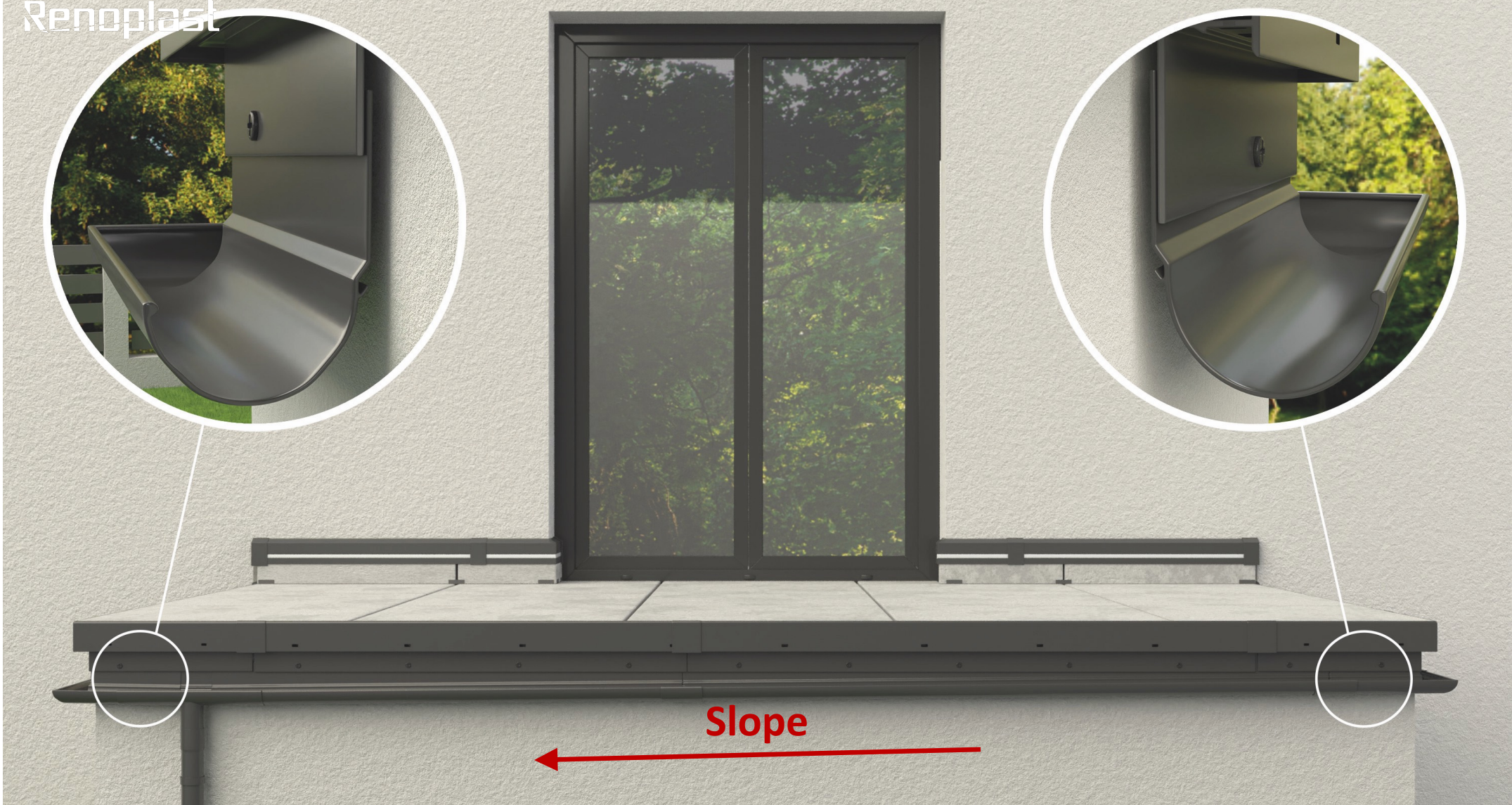
Fixing downpipe clips

Downpipe clips positions should be aligned with the running outlet axis. The maximum distance between downpipe clips should not exceed 180 cm for 2 m downpipe length.



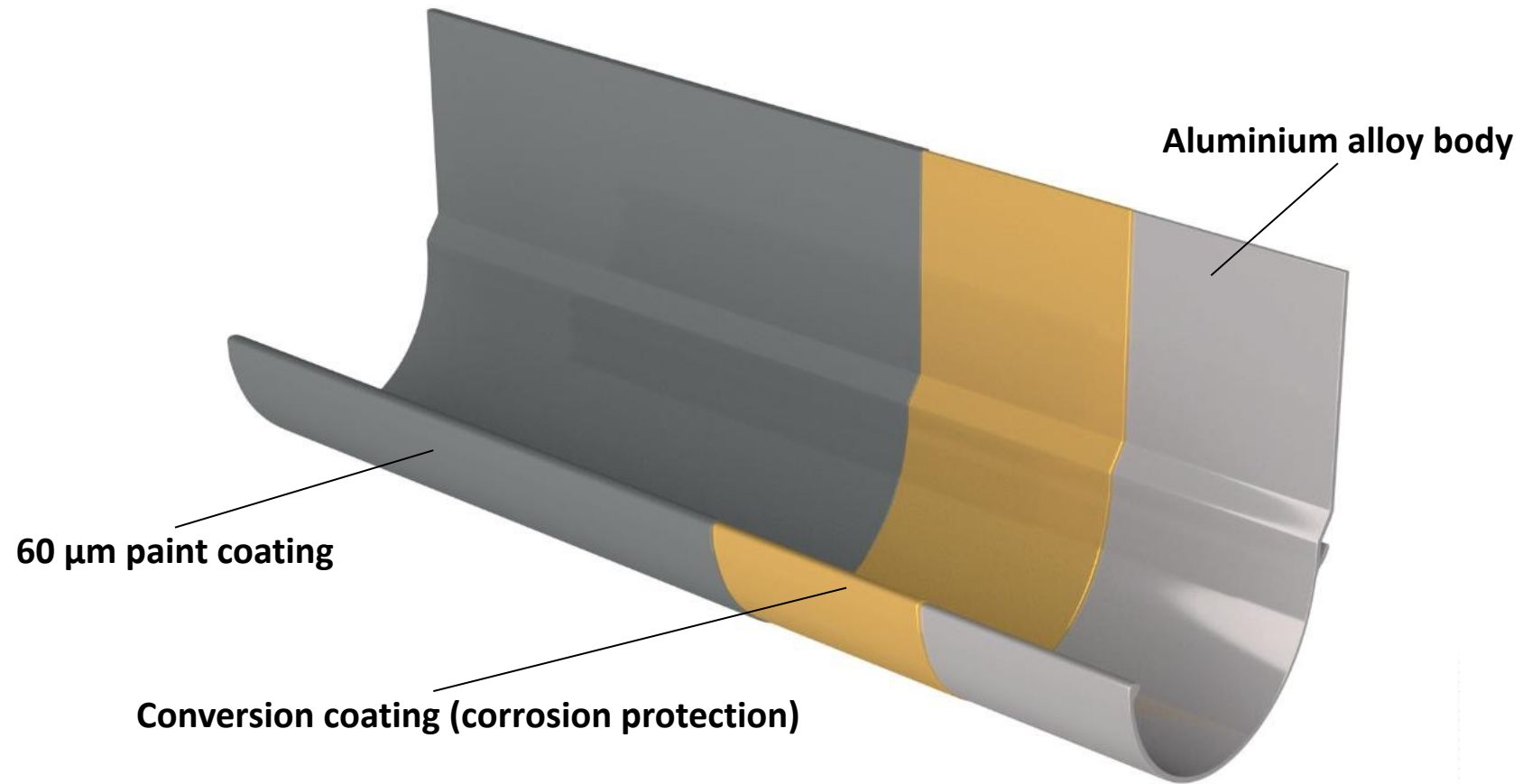
Downpipe installation

R50 downpipes feature bell and spigot joints. The **R50 downpipe** system includes 87° and 67° offset bends.



Sloping the gutters at the required pitch

To adjust the pitch pull the gutter slightly out of the drip edge. The maximum elevation difference between the **R50** guttering end points should not exceed 28 mm.

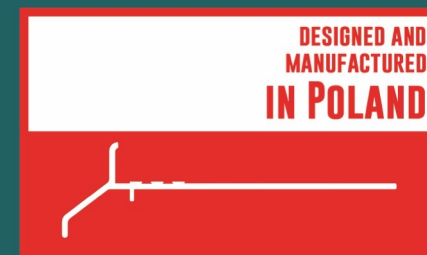


NOTES:

All components of **Renoplast R50** gutter system are finished with Qualicoat approved conversion and topcoat coating system applied in our in-house paintshop.



QUALICOAT
Inspired by architecture, trusted by professionals
| SEASIDE |



Renoplast

www.renoplast.pl/en