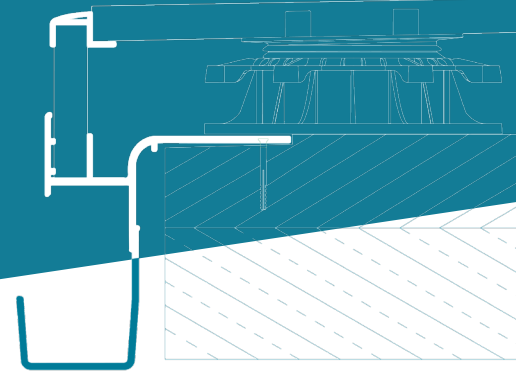


Renoplast RK65

GUTTER SYSTEM

All components of RK65 gutter system are compatible with the following RENOPLAST drip edges: W60, W20R, W35 PLUS, W30R PLUS.



KEY FEATURES

- effective drainage of water from balconies, terraces and patios
- all-in-one solution for quick and simple installation
- long-term durability and full corrosion resistance
- box-shaped

TECHNICAL DATA

BODY	AW 6060 aluminium alloy
WEIGHT	approx. 907 g/m (linear meter)
COATING SYSTEM	0.6 g/m ² conversion coating, and min. 60 µm polyester powder coating

INSTALLATION TOOLS

You will need the following tools: folding ruler, knife, electric drill, hand-held mixer, string line, pencil, spatula, metal handsaw or circular saw. Circular saw should be equipped with an aluminium cutting blade to cut without damaging the coating.

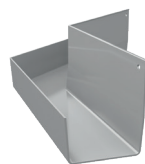
AUXILIARY COMPONENTS



RK65 90 EXTERNAL GUTTER ANGLE



RK65 90 INTERNAL GUTTER ANGLE



RK65 135 EXTERNAL GUTTER ANGLE



RK65 135 INTERNAL GUTTER ANGLE



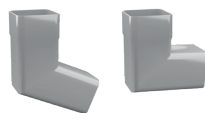
RK65 GUTTER STOPENDS



RK65 GUTTER UNION



RK65 RUNNING OUTLET



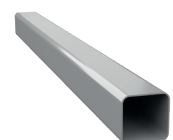
67 OR 87 DEGREE RK65 45X45 DOWNPIPE OFFSET BEND



RK65 40x40 mm DOWNPIPE CLIP
120 mm long clip screw
250 mm long clip screw



SEALANT ADHESIVE



RK65 40x40 mm DOWNPIPE
0,5 m, 1 m, 2 m

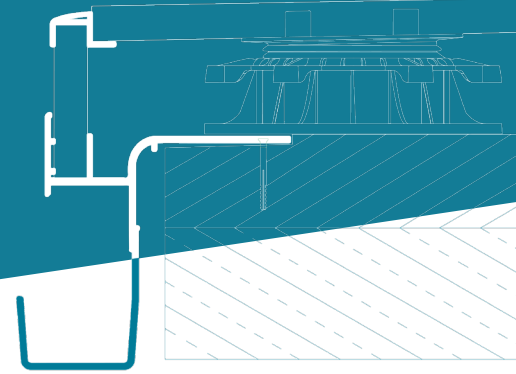
COLOURS

Standard colours: RAL 7037 dusty grey, RAL 7024 graphite grey, RAL 8019 grey brown. Other colours from RAL Classic chart are available on request.

Renoplast RK65

GUTTER SYSTEM

All components of RK65 gutter system are compatible with the following RENOPLAST drip edges: W60, W20R, W35 PLUS, W30R PLUS.



INSTALLATION

Follow the relevant installation guide available at: <https://www.renoplast.pl/download>.

SEE PRODUCT →



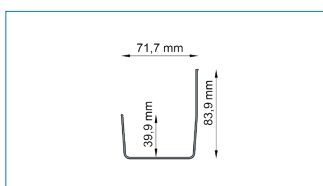
INSTALLATION GUIDELINES

Protect the paint coat from damage during installation. Reject any damaged components. Any dirt should be removed from the surfaces using water and non-abrasive cloth. Wet materials, such as sealing slurry or tile adhesive should be removed from the outer surfaces before drying. The manufacturer shall not be liable for any damage resulting from product misuse or using inadequate auxiliary materials or tools. All work must be in compliance with construction plans, product data sheet, relevant standards, good construction practice and safety requirements.

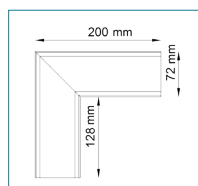
MAINTENANCE GUIDELINES

For cleaning use clean water with some detergent. Do not use highly acidic or high alkaline cleaners or surfactants, which may react with aluminium. Do not use organic solvents containing esters, ketones, aromatic compounds, glycol esters, chlorinated hydrocarbons, etc. After cleaning rinse the surfaces with cold clean water. In winter do not use salt or other de-icing chemicals. We recommend to check the condition of the relevant terrace, patio and balcony components every six months. Immediately remove any discovered defects.

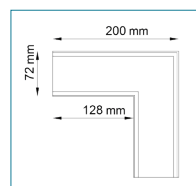
DIMENSIONS



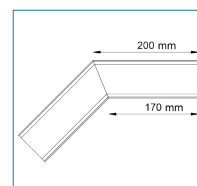
RK65 BOX GUTTER



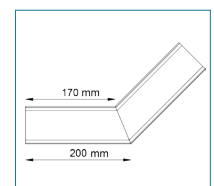
RK65 90 EXTERNAL GUTTER ANGLE



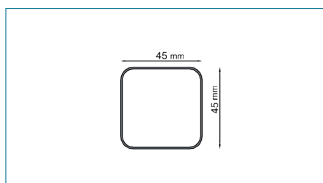
RK65 90 INTERNAL GUTTER ANGLE



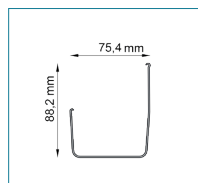
RK65 135 EXTERNAL GUTTER ANGLE



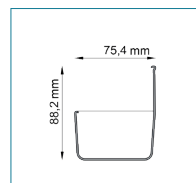
RK65 135 INTERNAL GUTTER ANGLE



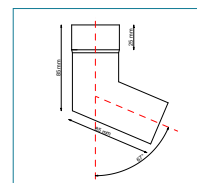
RK65 ROUND DOWNPIPE



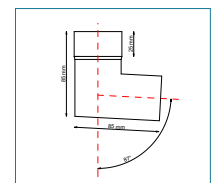
RK65 GUTTER UNION



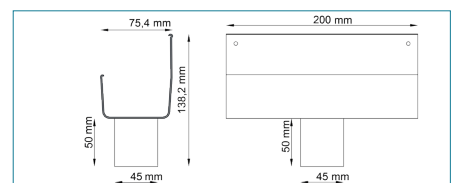
RK65 GUTTER STOPENDS



RK65 67 DOWNPIPE OFFSET BEND



RK65 87 DOWNPIPE OFFSET BEND

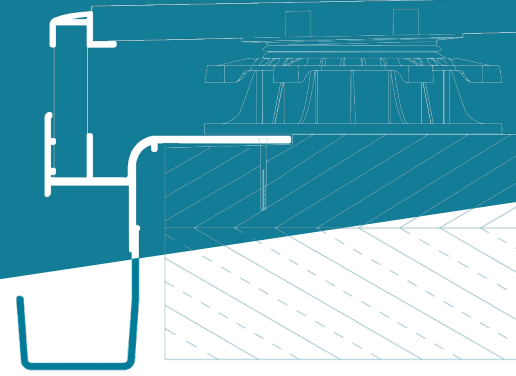


RK65 RUNNING OUTLET

Renoplast RK65

GUTTER SYSTEM

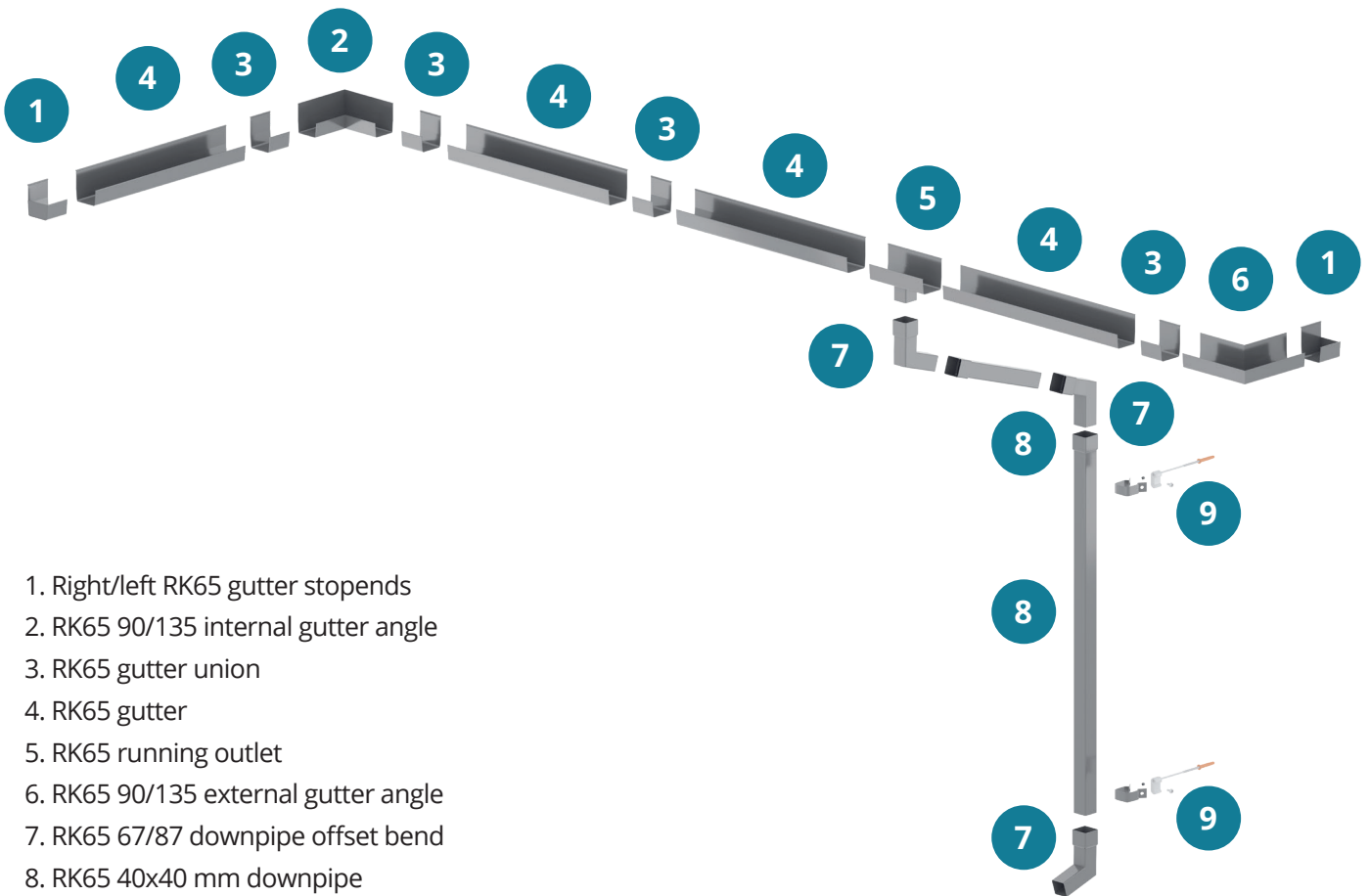
All components of RK65 gutter system are compatible with the following RENOPLAST drip edges: W60, W20R, W35 PLUS, W30R PLUS.



COMPATIBILITY MATRIX

RENOPLAST DRIP EDGE	W35 PLUS	W60	W20R	W30R PLUS	W30R	K10R	K20R	K35	K100R	K40
COMPATIBLE WITH RK65 GUTTER	YES				NO					

RK65 GUTTER SYSTEM DIAGRAM

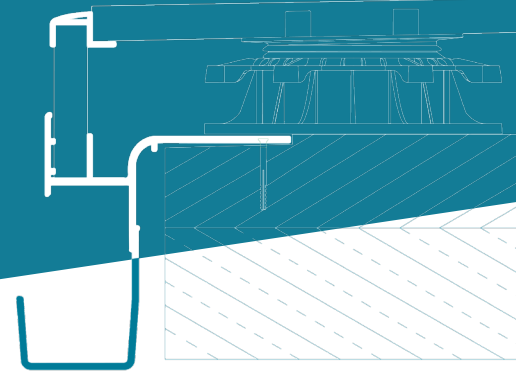


1. Right/left RK65 gutter stopends
2. RK65 90/135 internal gutter angle
3. RK65 gutter union
4. RK65 gutter
5. RK65 running outlet
6. RK65 90/135 external gutter angle
7. RK65 67/87 downpipe offset bend
8. RK65 40x40 mm downpipe
9. RK65 40x40 mm downpipe clip

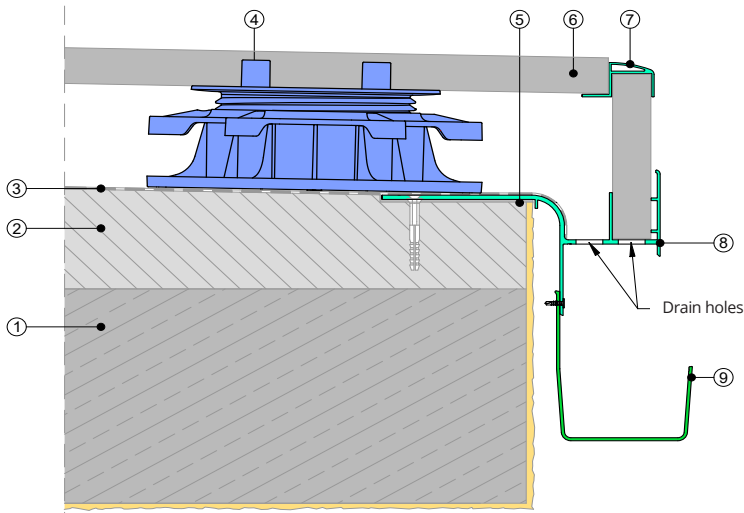
Renoplast RK65

GUTTER SYSTEM

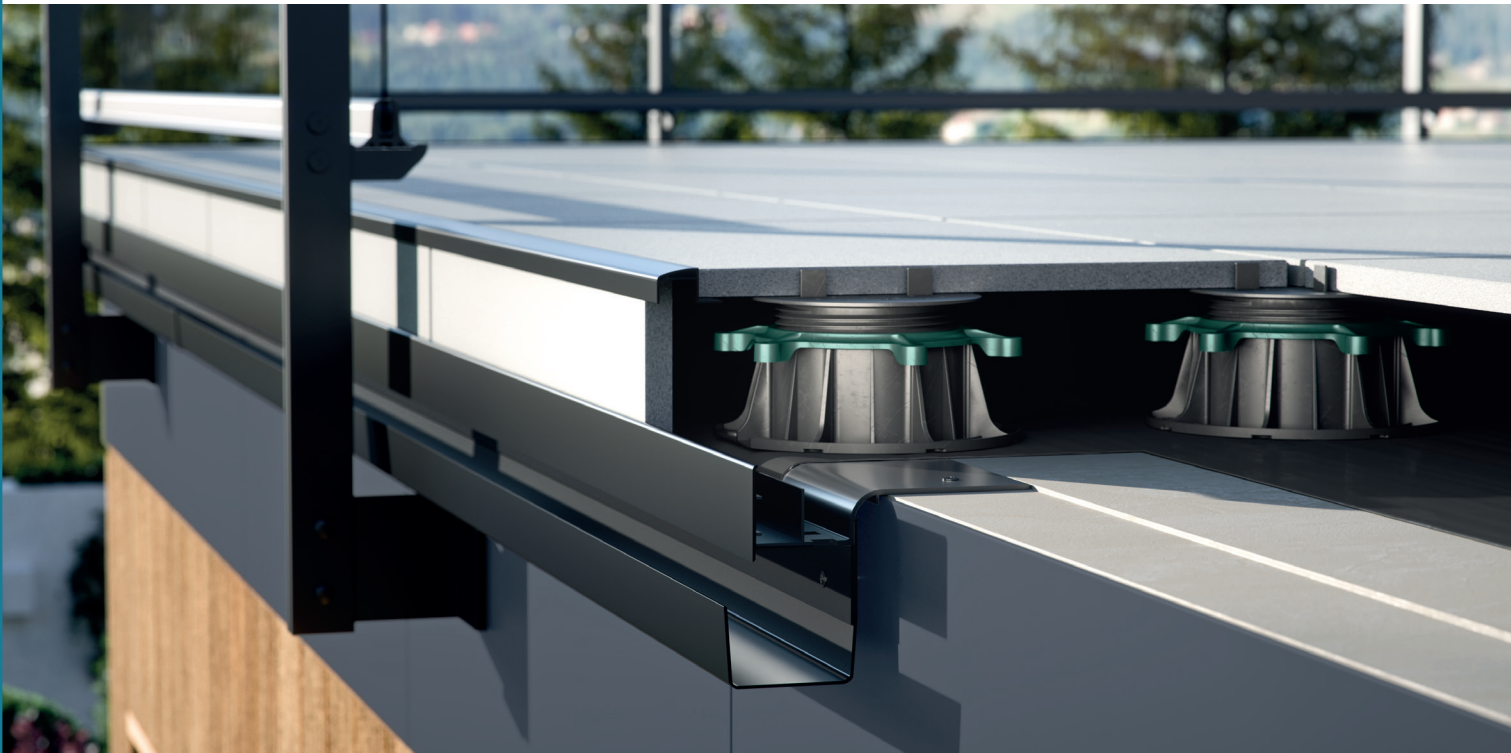
All components of RK65 gutter system are compatible with the following RENOPLAST drip edges: W60, W20R, W35 PLUS, W30R PLUS.



INSTALLATION EXAMPLE



1. Structural slab
2. 1.5-2% sloping layer
3. Waterproof barrier (e.g., EPDM)
4. RENOPAD PRO adjustable pedestal
5. Elastic sealant
6. Paver
7. W20Z fascia coping
8. W20R drip edge
9. RK65 gutter



Notes:

Edition: 4.05.2026. This product brochure supersedes all previous editions. It gives recommendations for standard application conditions only, and thus shall not be used in place of installation drawings. Suitability of our products for particular conditions should be verified by the contractor. The actual product specifications may vary slightly due to allowable process or tool dimension changes. Any materials used in combination with Renoplast products must be obtained from reputable sources. Our liability for any omissions or inaccuracies of the data given in this brochure is limited to gross disinformation and/or negligence.

Renoplast

RENOPLAST Sp. z o.o.
phone: +48 697 635 580
office@renoplast.pl
www.renoplast.pl/en

