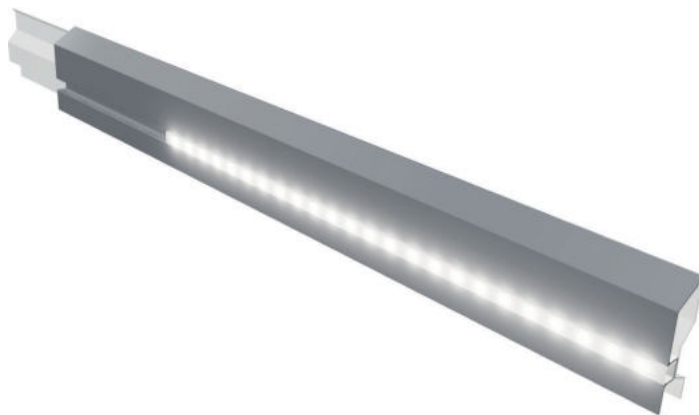
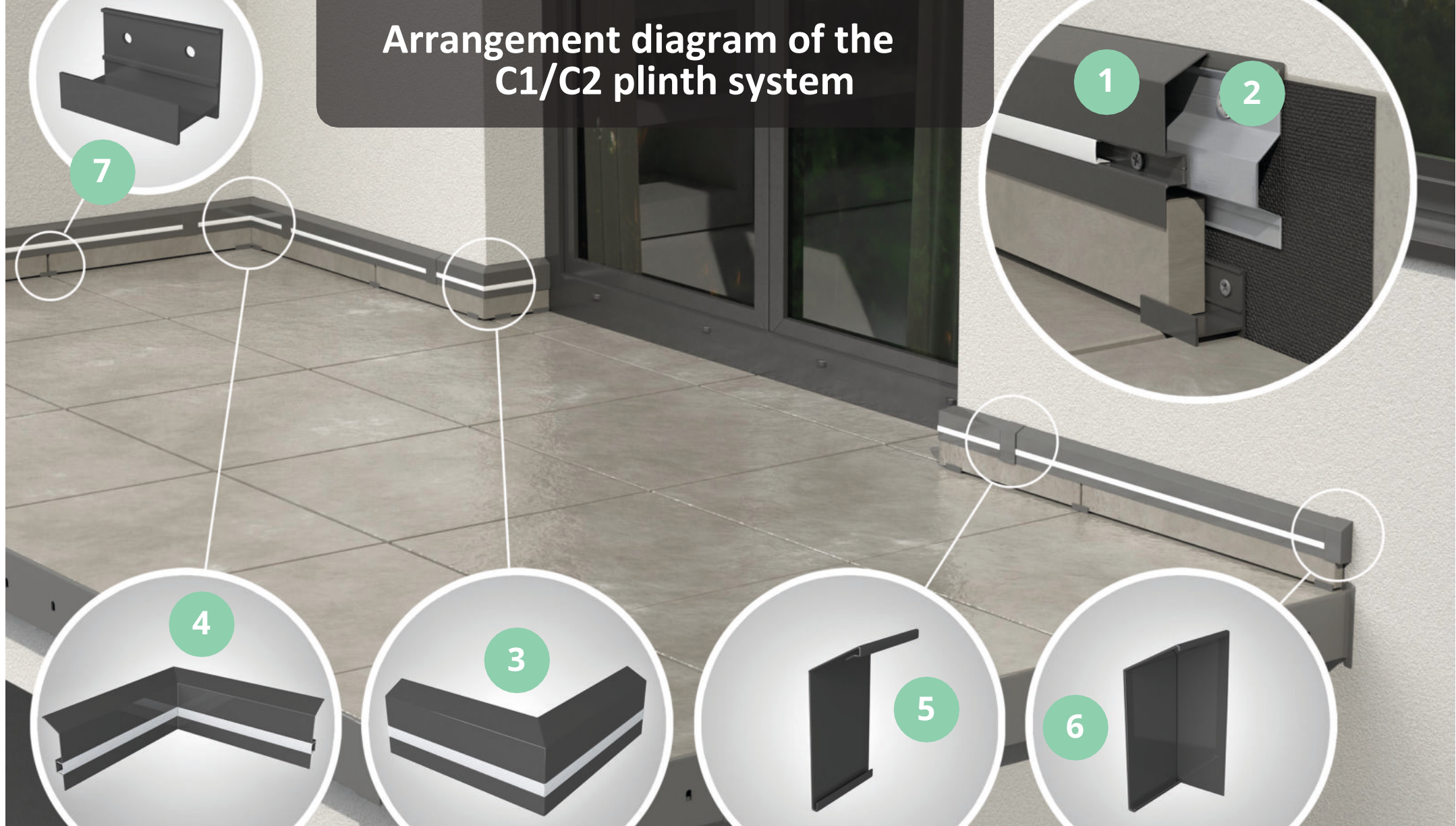


Instruction for installation of plinth system **C1/C2**



Arrangement diagram of the C1/C2 plinth system



Profile C2
length 200 cm

1

Profile C1
length 200 cm

2

Outside corner
C2 90°

3

Inside corner
C2 90°

4

Connector C2

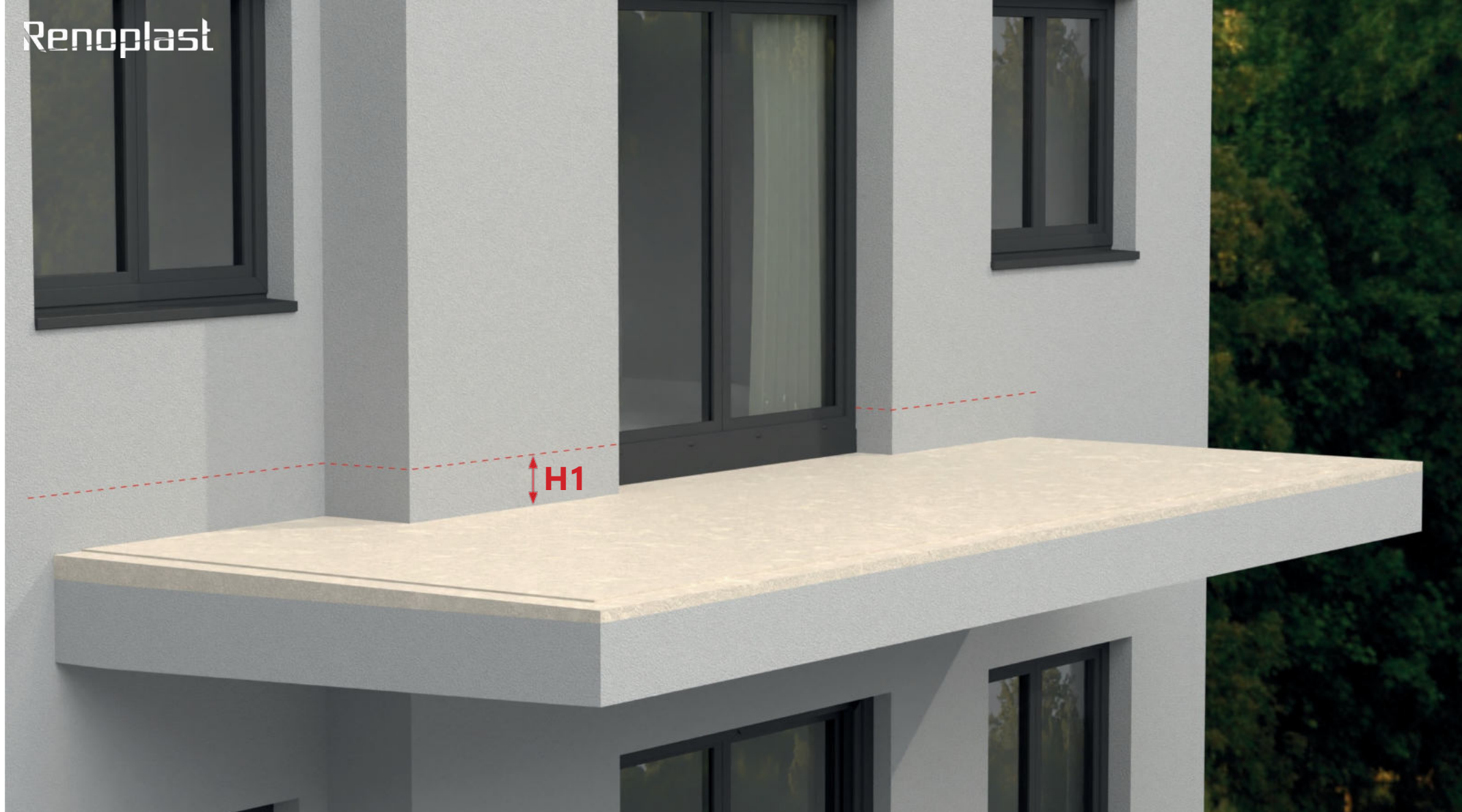
5

End stops C2

6

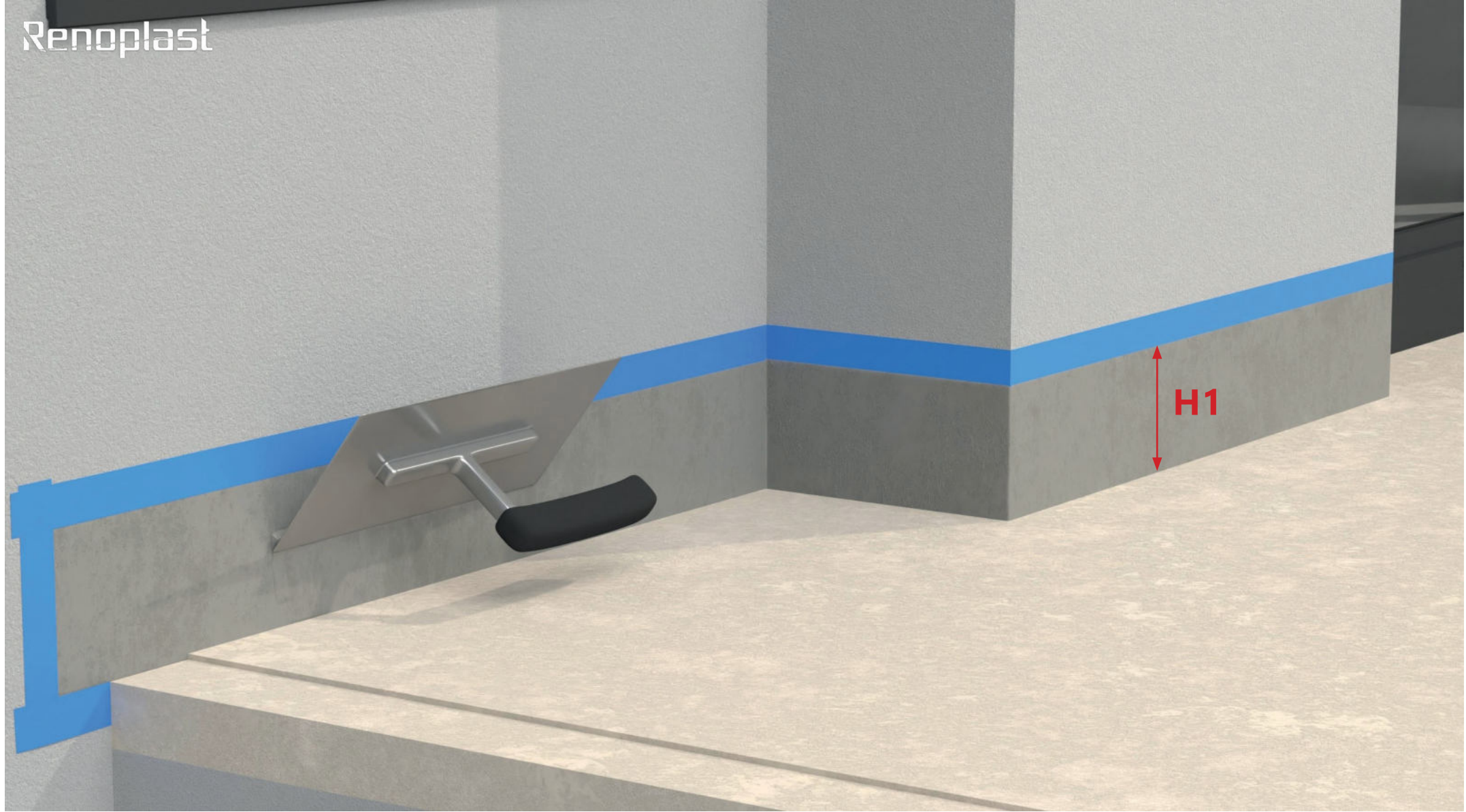
Lower Step
support

7



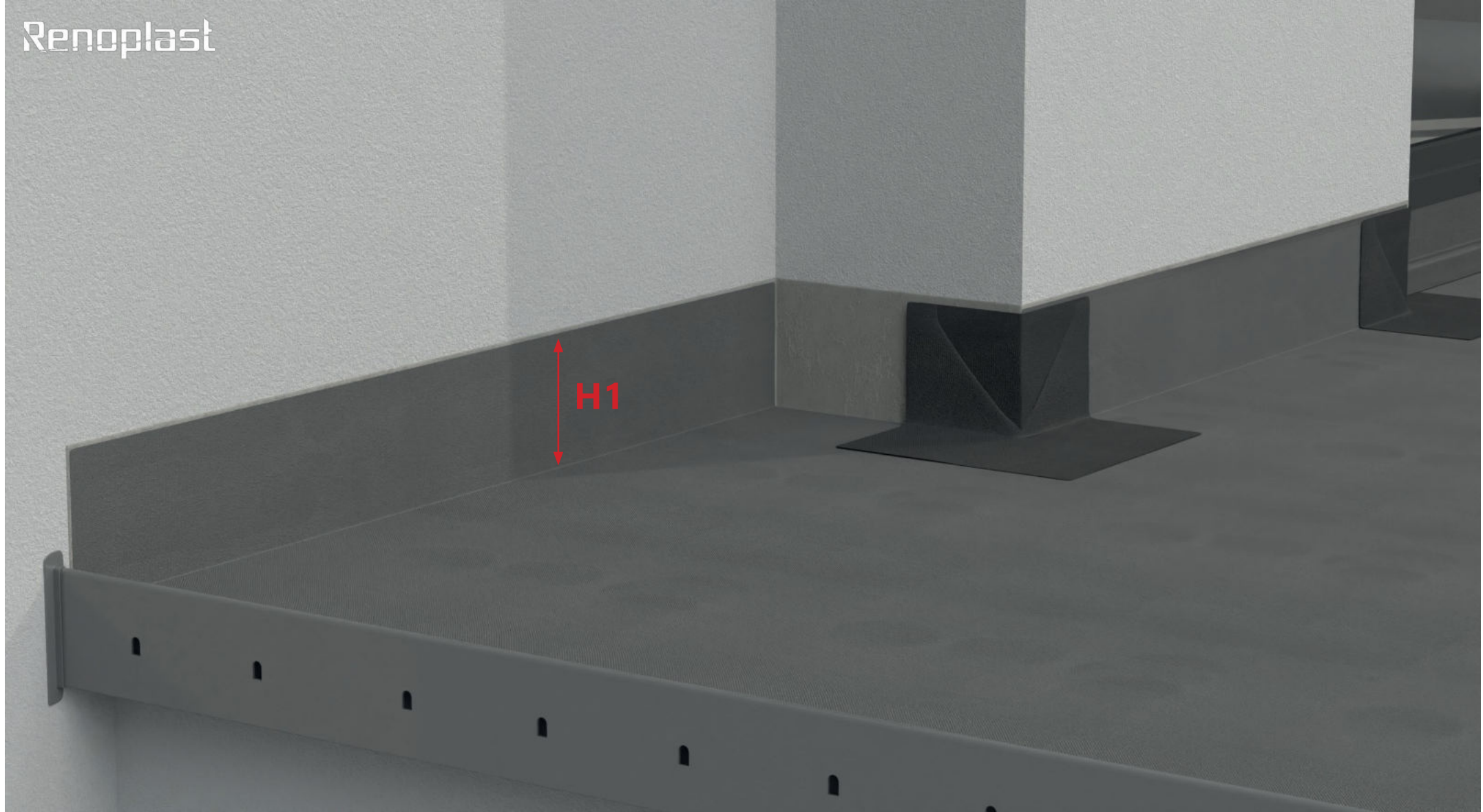
Determining the height of the subfloor for plinths

The height of the wall surface to be prepared as a base for the plinth layers - **H1** – should be the sum of the thickness of the floor layers (insulation, pedestal, floor slab) plus 15 cm the height of the plinth above the floor.



Preparing the substrate for waterproofing

At height **H1**, the wall should be smooth and load-bearing (levelled with adhesive mortar, for example).



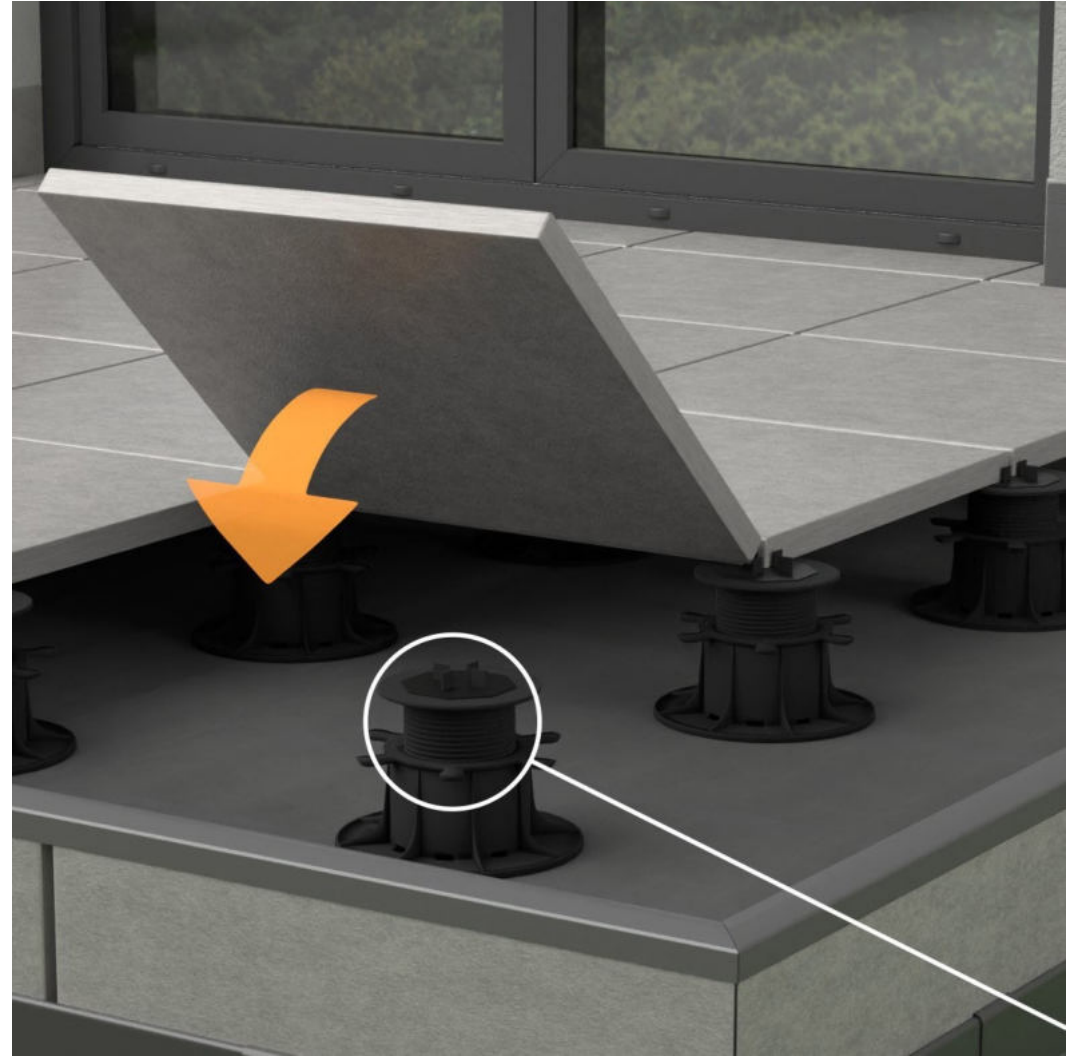
Installation of terrace/balcony floor layers

Depending on the chosen system for the terrace/balcony, the appropriate eaves profile is installed and then install the **EPDM** membrane insulation (PVC, TPO, felt), bringing it up to **H1** height on the wall.

SMART



RENOPAD



Laying the floor tiles

Depending on the system chosen, we lay the floor tiles with **SMART** or **RENOPAD** pads.



Installation of C1 profiles

The **C1** plinth profiles are mechanically fixed to the wall using wall plugs. The profiles should be installed along the edge of the **EPDM** wall membrane. At the profile joints, joints should have expansion gaps of 2 to 5 mm, which should be filled with a permanently elastic compound (e.g. polyurethane).



Sealing of C1 profile

The gap formed on top of the **C1** profile is filled with a permanently elastic compound (e.g. polyurethane).



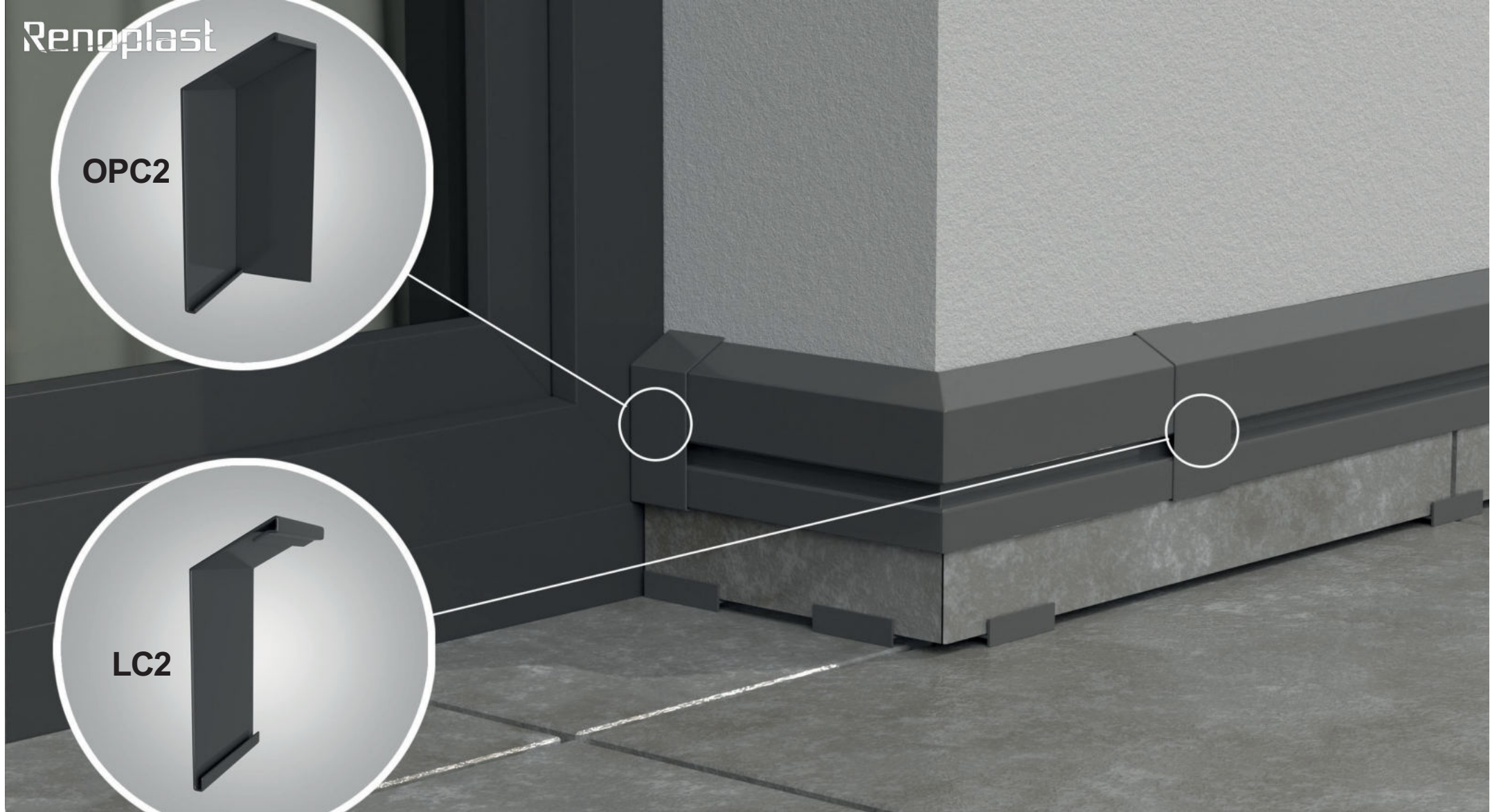
Installation of plinth tiles

Place the lower stair supports on the base plates against the wall with an axial spacing equal to the length of the plinth tiles. Then lay the plinth tiles cut to a height of **H2**.



Preparation of the C2 profiles

After laying the plinth tiles, the **C2** profiles are measured and cut (cut to length with a hand-held metal saw or a mechanical with an aluminium saw). The profiles should be cut so as to leave expansion gaps of 2 to 5 mm at the connections. The wall corners should be fitted with outside corners **NZ C2/90** or inside corners **NW C2/90**.



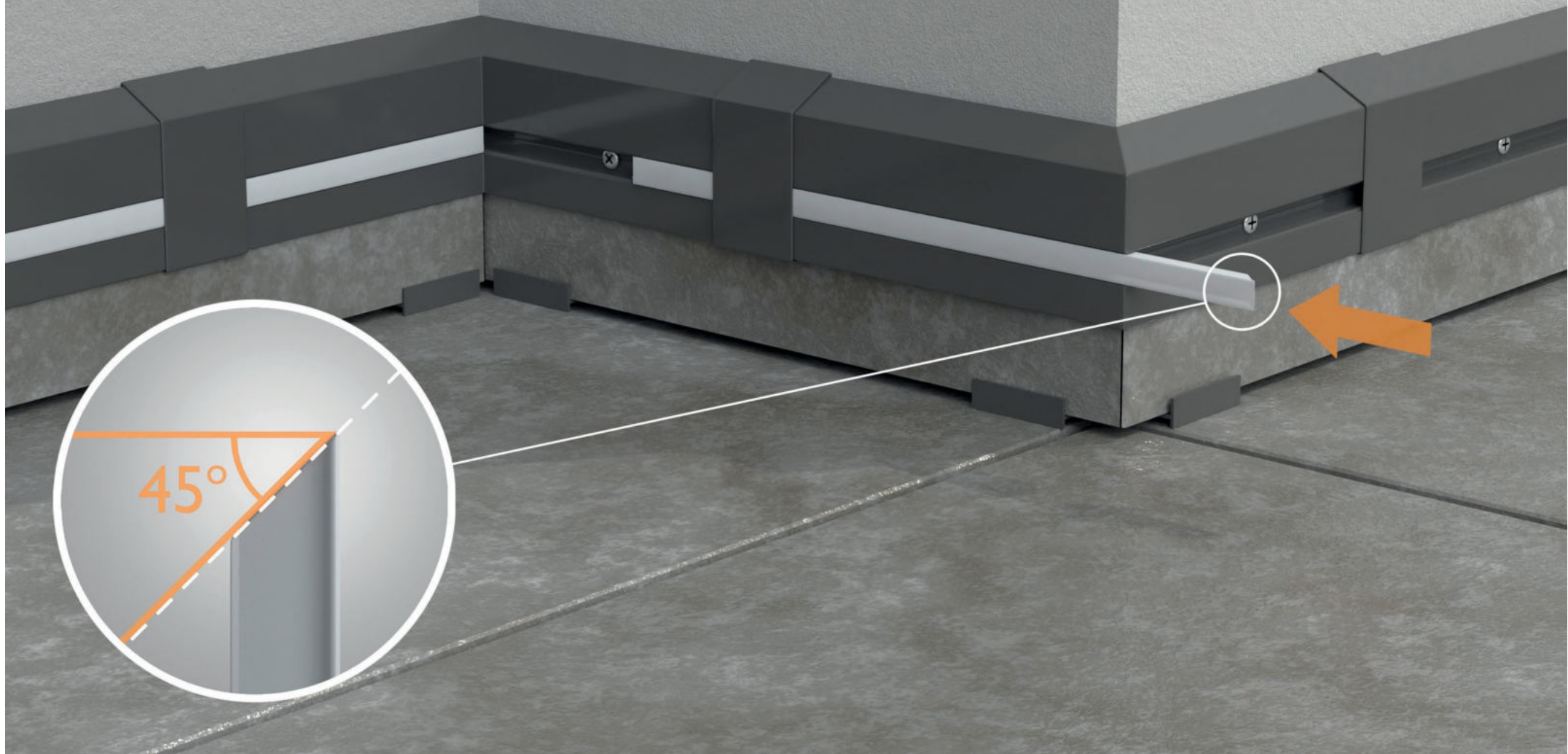
Installation of OPC2 end stops and LC2 connectors to C2 profiles

Optional **OPC2** end stops (right/left) are fitted to the ends of the profiles, and **LC2** connectors to the joints.



Installation of Profiles C2

Profiles **C2** are fixed to Profiles **C1** using stainless steel self-drilling screws (supplied with the profiles).



Installation of the cover panels

A plastic cover panel is inserted into the slot in the **C2** profile. Optionally, before installing the cover, LED strip can be laid in the slot for floor lighting.



COMMENTS:

In addition to its aesthetic qualities, the **C1/C2** plinth system ensures the tightness of the plinth zone, supports the fixing of **EPDM**, PVC, TPO and felt membranes to vertical surfaces. The unique solutions of the plinth system make it possible to install plinth tiles without gluing them to the substrate.