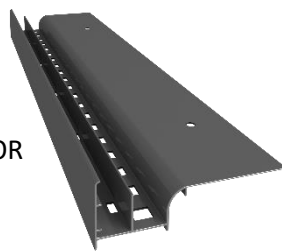




# DRIP PROFILE

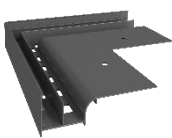
FOR TERRACES OR BALCONIES WITH A RAISED FLOOR (VENTILATED) ON ADJUSTABLE PEDESTALS



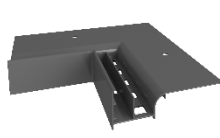
## ACCESSORIES:



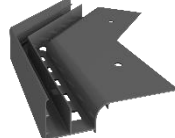
**W20Z**  
Top profile



**NZ W20/90**  
Outside corner 90°



**NW W20/90**  
Inside corner 90°



**NZ W20/135**  
Outside corner 135°



**NW W20/135**  
Inside corner 135°



**L W20**  
connector

## USE:

The drip profile W20 core is a high quality aluminium alloy, polyester coated to ensure extremely high corrosion and weather resistance. It is an edging and finishing profile for raised (ventilated) terrace and balcony floor, installed on the adjustable pedestals RENOPLAST RENOPAD.

## PROPERTIES:

- efficient water run-off and water tightness around the drainage area
- corrosion and weather resistance
- optimal shape suitable for use with adjustable pedestals up to the height of 20 cm
- height adjustment at front edge

## TECHNICAL DATA:

<b>BASE:</b>	aluminium alloy core conversion layer coated and polyester film finished
<b>WEIGHT:</b>	profile W20 approx. 1300 g/lm , profile W20Z approx. 310 g/lm
<b>LENGTH:</b>	200 cm Profile W20 and W20Z
<b>COATING THICKNESS:</b>	min. 60 µm

## COLOURS:

Basic colours:



RAL 8019



RAL 7037



RAL 7024

The presented colours are for reference only. Other colours in the RAL colour system are made on order

## SUBSTRATE:

Cement or concrete screed, other substrates that have suitable stiffness and soundness.

## SURFACE PREPARATION:

The surface must be sound, even, clean of surface contaminants. Cement screed must be set, cured, free of cracking and with properly installed expansion joints. A „step” of reduced thickness by ca. 3 mm, running along the edge of the balcony with corresponding to the width of the profile (80 mm), must be formed in the substrate so that the profile is installed flush with the screed surface. The step can be achieved using a plastic template available as an ancillary product:

1. For freshly applied screeds - by embedding the template in fresh mortar.
2. For set screeds - by placing the template along the balcony edge and applying a thin layer mortar to level and finish flush with template surface.

## TOOLS:

Metre ruler or tape measure, hand saw or circular saw suitable for cutting aluminium, knife, agitator or low-speed drill, hoop paddle, stainless steel trowel, brush, block brush, putty knife or bucket trowel, measuring cup, power screwdriver, builders line or string, spirit level. Cutting tools that generate high levels of heat (abrupt temperature increase) like angle grinder must not be used.

## APPLICATION CONDITIONS:

Profiles installation should be carried out in conditions suitable for waterproofing and assembly materials (primers, adhesives, mechanical or chemical anchors, other materials) in accordance with technical data sheets of the materials. Protect the trowelled surface from excessive drying and damp penetration.

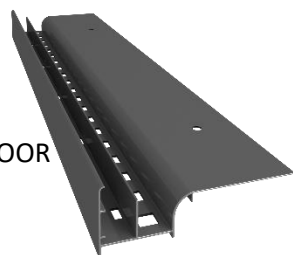
## INSTALLATION:

Start with corners installation. Put the corners in place to mark the location of the anchors, drill holes, remove any drill dust, insert anchor sleeves in the mounting holes (4 pcs per 1 m of the profile) and secure the profiles in place. Measure and cut straight drip profiles, making sure that 2 mm expansion gaps are left between profiles and about 5 mm at profile/wall joints. Next, apply a thin layer of elastic compound, e.g. polyurethane sealant on the surface of the previously formed step in the screed and start the final installation of the profiles, making sure that they are level and flush. Screw the profiles to the substrate and leave until set, then tightened the anchors. Fasten the connector L W20 connectors on the profiles in the places of expansion joints. Seal the expansion joints and profile/wall joints thoroughly with a polyurethane elastic sealant. Next, apply waterproofing (e.g. cementitious mortar for waterproofing or EPDM, PVC membranes, etc.) over entire surface, install reinforcement tapes priorly, if necessary. When laying the covering (thick tiles) on adjustable pedestals like e.g. RENOPLAST RENO PAD, start with fitting 2 cm thick tiles vertically in the W20 profile, measure the desired height and cut the tile (the upper edge of the tile should be lowered by approx. 8-9 mm from the surface of the cladding, installed on the balcony/terrace). Insert the tiles, cut to the desired height, in the W20 profile slot, and fit or adhere the top profile W20Z on the tile edge. A tile installed on adjustable pedestals should rest on the W20Z profile. Make sure that the front tile height is less than 21 cm.



# DRIP PROFILE

FOR TERRACES OR BALCONIES WITH A RAISED FLOOR  
(VENTILATED) ON ADJUSTABLE PEDESTALS



## GENERAL LIMITATIONS - INSTALLATION:

During installation protect the profile coating from damaging. Damaged profiles must not be installed. If stained or soiled, clean the profiles immediately with water and non-scratch cloth. Care should be taken not to allow stains (mortar or adhesives splashes, etc.) to harden on profile surface. The manufacturer shall not be liable for any damage resulting from improper use of the product, use of unsuitable materials, accessories or ancillary materials or use of improper tools. Installation works should be carried out in accordance with the local building code, the technical data sheets, applicable standards, best practice, health and safety regulations.

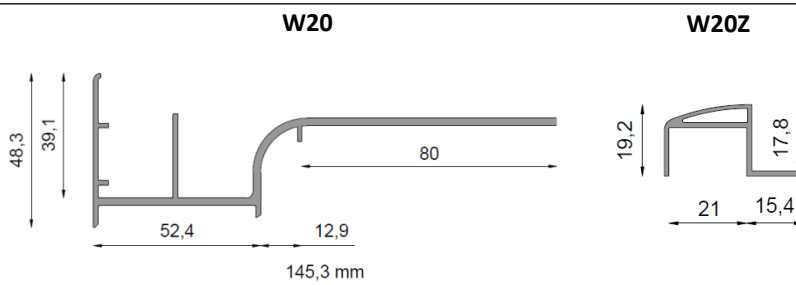
## GENERAL LIMITATIONS - MAINTENANCE:

The profiles should be cleaned at least twice a year. For cleaning use water and non-scratch cloth. Do not use strong acidic or strong alkaline cleaning agents or surfactants that may react with aluminium. Organic solvents containing esters, ketones, alcohols, aromatic compounds, glycol esters, chlorinated hydrocarbons, etc. must not be used. After each washing the surface must be immediately rinsed with clean cold water. Salt and chemicals must not be used to remove ice around the profiles. It is recommended that balconies and terraces be inspected twice a year to check the technical condition of system elements. Any identified defects should be repaired promptly.

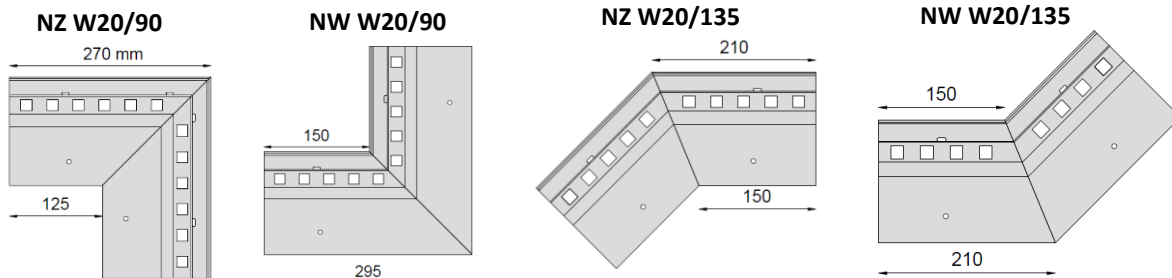
## DIMENSIONS:

### CROSS-SECTION

Minimal overhang of the profile beyond balcony/terrace outer edges: **66 mm**

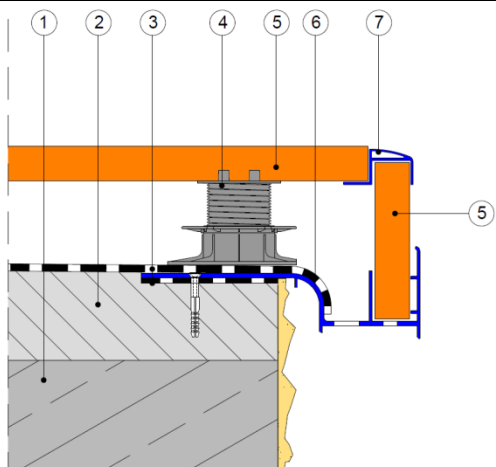


### CORNER DETAILS



Outside and inside corners of any angle are made to order. Angle measurement on the construction site should be carried out on the finished screed with an accuracy of  $\leq 1^\circ$ , using a long arm protractor.

### EXAMPLE OF INSTALLATION:



1. Load-bearing slab
2. Sloping screed 1.5-2.0%
3. Waterproofing
4. Adjustable pedestal **RENPLAST RENOPAD**
5. Thick (20 mm) tiles
6. **RENOPLAST W20** profile
7. **RENOPLAST W20Z** profile

# Renoplast

RENOPLAST Sp. z o.o.  
Ul. Fabryczna 14, 34-300 Żywiec  
Tel. 33 863-78 89  
NIP 553-23-28-471  
[biuro@renoplast.pl](mailto:biuro@renoplast.pl)  
[www.renoplast.pl](http://www.renoplast.pl)

#### Notice:

Version: 17.07.20 Publication of this Technical Data Sheet renders older editions invalid.

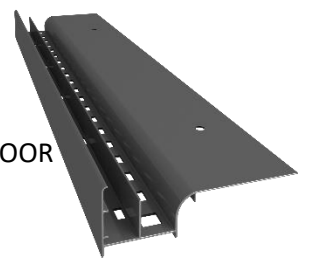
The above information refers only to general conditions of use of our products and cannot replace a technical design. When used in conditions other than recommended, the installer is obliged to test whether Renoplast products are suitable for application in the conditions.

We recommend that materials from reliable manufacturers are used with Renoplast products. The liability of Renoplast Sp. z o.o. as to the scope and type of information provided is limited to claims in the case of gross negligence (intentional or negligent behaviour).



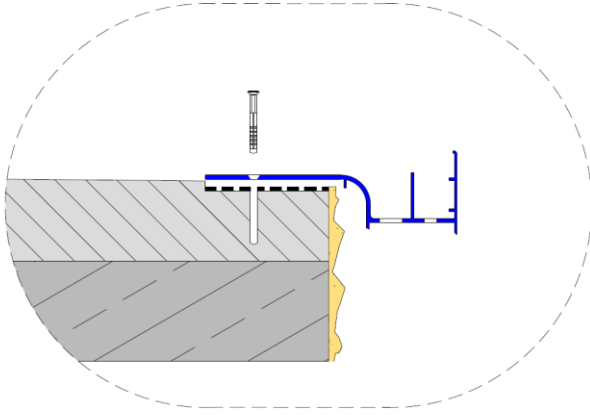
# DRIP PROFILE

FOR TERRACES OR BALCONIES WITH A RAISED FLOOR  
(VENTILATED) ON ADJUSTABLE PEDESTALS

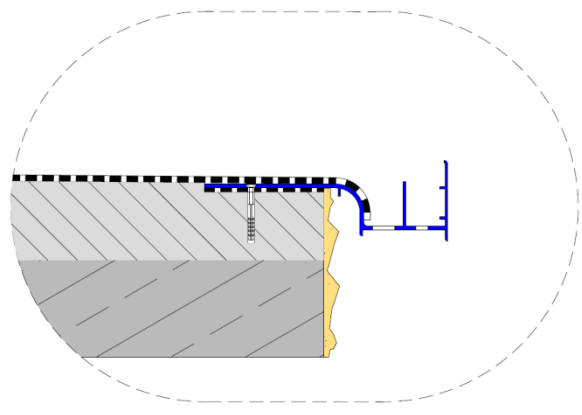


## INSTALLATION:

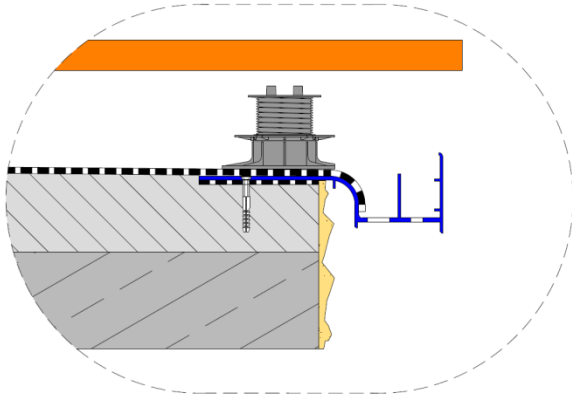
1



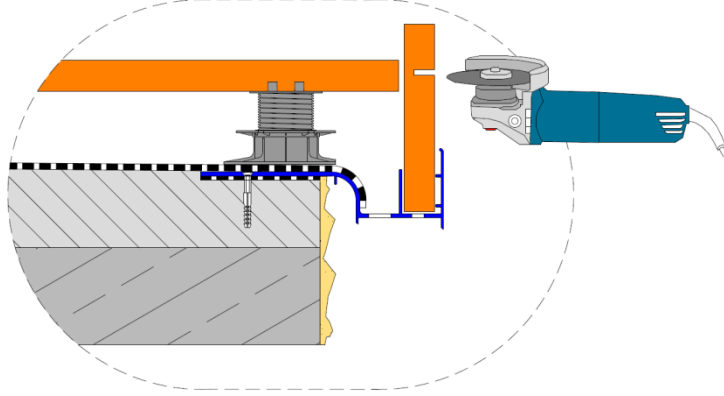
2



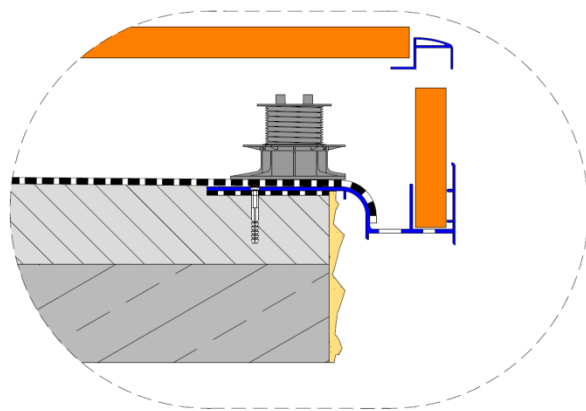
3



4



5



6

