

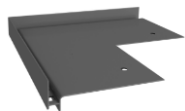


# STEP PROFILE

STEP PROFILE FOR THICK PAVING TILES INSTALLED ON THE 'SMART' PEDESTALS



## ACCESSORIES:



**NZ SW90**  
Outside corner 90°



**Bottom riser bracket**



**Upper riser bracket**



**SMART pedestals**



**Adjustment shims for SMART pedestals**

## USE:

RENOPLAST SW is a step edging profile suitable for thick ceramic and natural stone tiles, installed on the RENOPLAST SMART pedestals, that is made of aluminium alloy, covered with anti-corrosion conversion layer and powder coating finish. The profile is designed to direct water/moisture away from under tiles through drainage holes. It is shaped so that a tile forms a front edge to protect the profile against damage.

## PROPERTIES:

- the solution ensures easy and fast installation. It is dedicated for tile installation on pedestals when paving the stairs
- aesthetic, robust and durable step edging
- optimal design suitable for waterproof membranes
- high rust resistance

## TECHNICAL DATA:

<b>BASE:</b>	conversion coated and polyester film finished aluminium alloy
<b>WEIGHT:</b>	approx. 770 g/lm (SW profile)
<b>PROFILE LENGTH:</b>	200 cm – SW and Upper riser bracket 6 cm Bottom riser bracket
<b>COATING THICKNESS:</b>	min. 60 µm (thermoset powder coating)

## COLOURS:

Basic colours:



RAL 8019



RAL 7037



RAL 7024

The presented colours are for reference only. Other colours in the RAL colour system are made on order.

## SUITABLE SUBSTRATE:

Concrete, reinforced concrete or cement screed. The surface must be sound, even, clean of surface contaminants, cured and free of cracks. A 1.5-2% slope is required for steps. Between the foundation and the constructor of the stairs above, there must be horizontal DPC layer in order to prevent rising damp from the ground.

## SURFACE PREPARATION:

A drop in the screed by ca. 3 mm or a step, running along the edge of the stairs at the width corresponding to the width of the installed profile (80 mm), must be formed in the substrate so that the profile is installed flush with the screed surface. The step can be achieved using a plastic template available as an ancillary product:

1. For freshly applied screeds - by embedding the template in fresh mortar.
2. For set screeds - by placing the template along the balcony edge and applying a repair mortar to level and finish flush with template surface.

## TOOLS:

Metre ruler or tape measure, hand saw or circular saw suitable for cutting aluminium, drill, screwdriver or power screwdriver, builders line or string, spirit level. Cutting tools that generate high levels of heat (abrupt temperature increase) like angle grinder must not be used for cutting profiles.

## APPLICATION CONDITIONS:

Profiles installation should be carried out in conditions suitable for the insulation and assembly materials (EPDM, PVC, TPO or other) in accordance with technical data sheets of the materials.

## INSTALLATION:

### Staircase with thick tiles on RENOPLAST SMART pedestals

Start from the lowest step. Install waterproofing (membranę or mortar) and tiles cut to size on the first stair riser. Apply a polyurethane mass to the rear part of the bottom riser bracket and then attach it to the riser with 2 mounting pins. Install cut tiles on the bottom riser bracket. Put the corners NZ SW90 onto the drop formed on the first step, next measure and cut the straight SW drip edge profiles, making sure that 2 mm expansion gaps are left at all joints between profiles. Mark the location of the anchors, drill holes, remove any drill dust, insert anchor sleeves in the mounting holes (4 pcs / profile, 2 pcs / corner). Apply a thin layer of e.g. PU sealant across the surface of the previously formed drop in the screed. Screw the profiles and corners to the substrate. Seal the expansion joints and profile/wall joints thoroughly with a polyurethane sealant. Then, apply waterproof membrane across entire surface of the stair tread and riser (e.g. attach EPDM or PVC membrane, cut to fit). Place the SMART pedestals, then cut the tiles so that, when laid, they will overhang by 1 cm beyond outer edges of the SW profiles and corners. Put the cut tile, cut to the desired size, onto the step (tread) and draw the outline of the top profile edge, on which the tile will rest, on the underside of the tile. Make a groove 5 mm deep and 3 mm wide along the outline using an angle grinder with a grinding disc. Remove dust, place the tile on the step so that the top SW profile edge is well fitted in the groove. The tiles on each tread should be wedged or blocked in place by the tiles installed on the riser above.



# STEP PROFILE

STEP PROFILE FOR THICK PAVING TILES INSTALLED ON THE 'SMART' PEDESTALS



## INSTALLATION:

Proceed with successive steps in a similar way. The tiles installed on the riser as well as on the thread can be spot-glued for stability. Finish the connection between staircase and landing/terrace/balcony edge with a profile like W30, W35 or other.

### Staircase connection with balcony/terrace during access floor installation using RENOPLAST RENOPAD pedestals

If the top riser is too high, an extra step formation may be necessary at the connection with the terrace/balcony, where raised flooring made of tiles or deck boards as paving materials and the W20 or W10 profiles as edging trims, is installed on the adjustable RENOPAD pedestals. If the extra step is necessary, apply a waterproofing to the terrace surface and lay the paving tiles/deck boards on the RENOPAD pedestals, measure the length and width of the extra stair on the surface adjacent to the staircase and, using e.g. polyurethane compound or adhesive, fix a upper riser bracket, cut to the desired size. For EPDM or PVC waterproof membranes, install 20 cm wide membrane patches over the base of the upper riser bracket on its both sides. When the adhesive is set, insert a 2 cm thick tile in the bracket channel, mark and cut to the desired height to meet the paving on the terrace, making sure that they are aligned and flush, and cover the top edge of the tile with the top profile W20Z. If the balcony/terrace edge is wider than the stairs, fascia should be installed on both sides of the extra step using the upper bracket and a tile, both cut to the desired size, and the W20Z profile. Mount the SW profile on the tread of the extra step as instructed above. Once the waterproofing and the SMART pedestals are installed, cut a groove on the underside of the tile and place it on top so that it is locked in place.

## GENERAL LIMITATIONS - INSTALLATION:

During installation protect the coating on the profile from damage. Damaged profiles must not be installed. If stained or soiled, clean the profiles immediately with water and non-scratch cloth. Care should be taken not to allow stains (e.g. resin, cement mortar or adhesive splashes, etc.) to harden on profile surface. The manufacturer shall not be liable for any damage resulting from improper use of the product, use of unsuitable materials, accessories or ancillary materials or use of improper tools. Installation works should be carried out in accordance with the design, the technical data sheets, applicable standards, good building practice, health and safety regulations.

### NOTICE!

The SW profiles are suitable for foot traffic and thus should be installed in residential buildings. Installations in industrial or public buildings or on stairs built for technical purposes as well as on utility or fire stairs are not recommended.

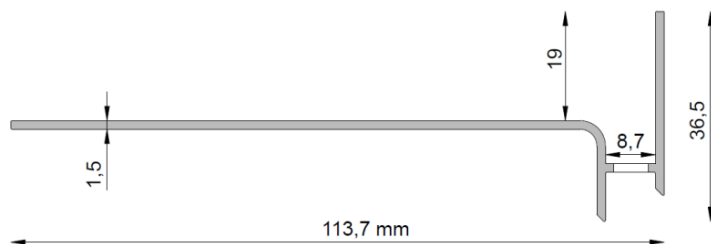
The SW drip edge profile should not be installed on the edge of the landing/terrace/balcony at the connection with stairs, since the top tile cannot be locked in place with the riser tile or upper riser bracket. Instead, it should be edged with the W30, W35 or other profile. The SW profiles are not suitable for steps, where tread depth is larger than the size of a single tile.

## GENERAL LIMITATIONS - MAINTENANCE:

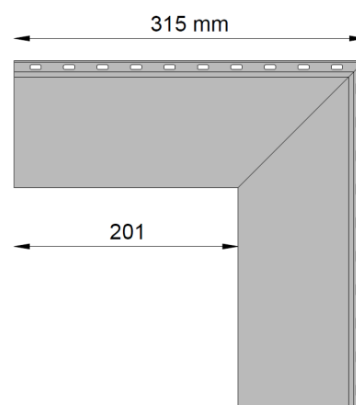
The profiles should be cleaned at least twice a year. For cleaning use water and non-scratch cloth. Do not use strong acidic or strong alkaline cleaning agents or surfactants that may react with aluminium. Organic solvents containing esters, ketones, alcohols, aromatic compounds, glycol esters, chlorinated hydrocarbons, etc. must not be used. After each washing the surface must be immediately rinsed with clean cold water. Salt and chemicals must not be used to remove ice around the profiles. It is recommended that balconies and terraces be inspected twice a year to check the technical condition of system elements. Any identified defects should be repaired promptly.

## DIMENSIONS:

SW Profile - cross-section



Outside corner NZ SW90





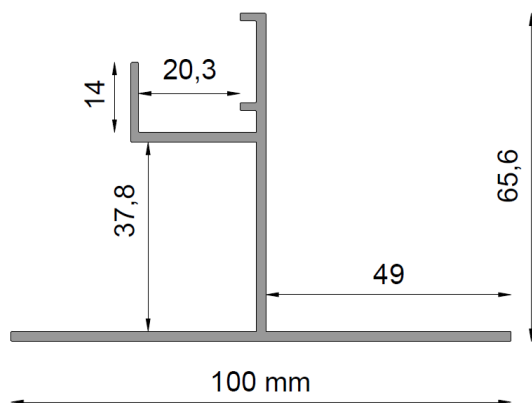
# STEP PROFILE

STEP PROFILE FOR THICK PAVING TILES INSTALLED ON 'SMART' PEDESTALS

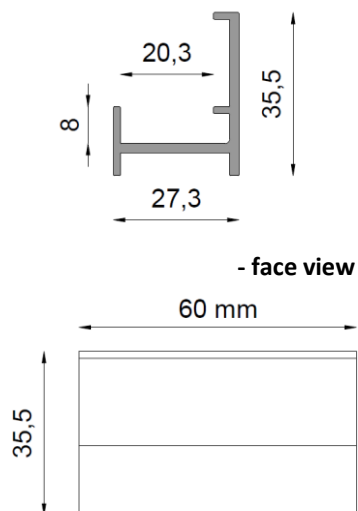


## DIMENSIONS:

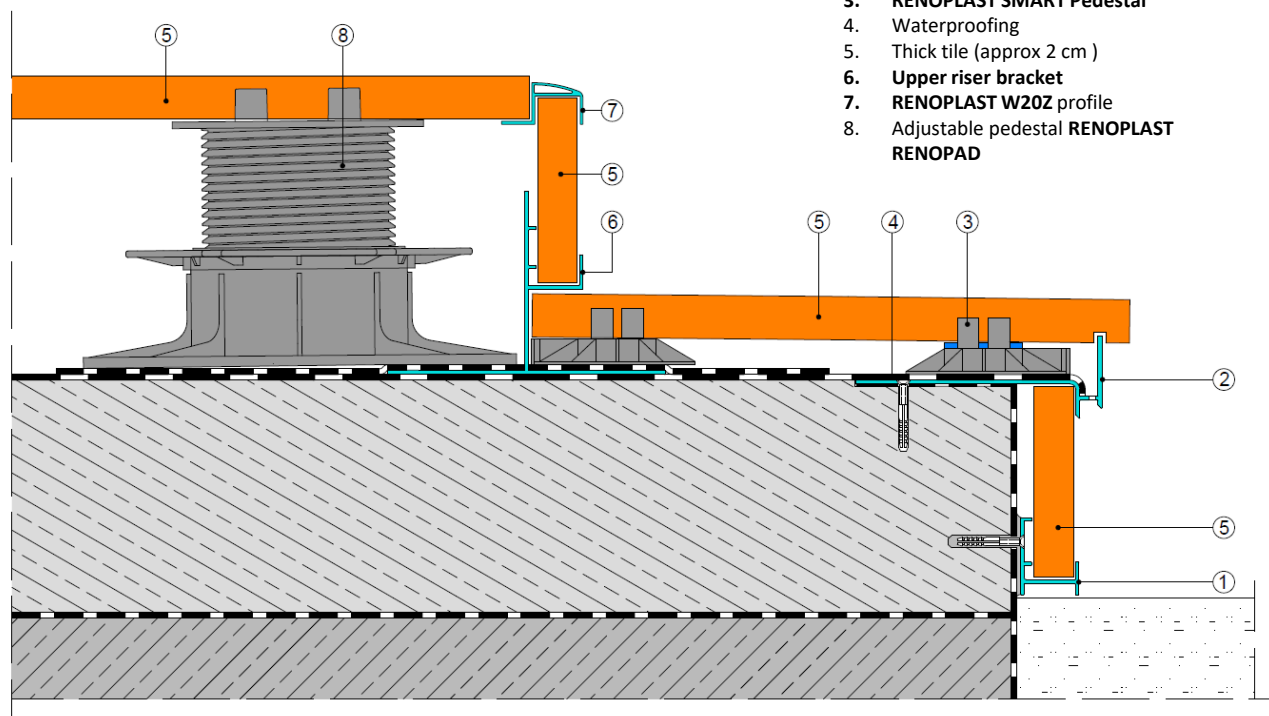
Upper riser bracket – cross-section



Bottom riser bracket – cross-section



## SAMPLE INSTALLATION:



1. Bottom riser bracket
2. RENOPLAST SW profile
3. RENOPLAST SMART Pedestal
4. Waterproofing
5. Thick tile (approx 2 cm)
6. Upper riser bracket
7. RENOPLAST W20Z profile
8. Adjustable pedestal RENOPLAST RENOPAD

# Renoplast

RENOPLAST Sp. z o.o.

Ul. Fabryczna 14, 34-300 Żywiec

Phone: 33 863-78 89

NIP 553-23-28-471

[biuro@renoplast.pl](mailto:biuro@renoplast.pl)

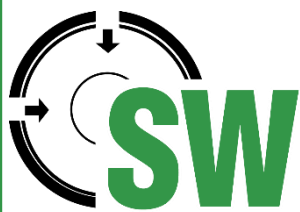
[www.renoplast.pl](http://www.renoplast.pl)

### Notice:

Version: 03/12/2020 Publication of this Technical Data Sheet renders older editions invalid.

The above information refers only to general conditions of use of our products and cannot replace a technical design. When used in conditions other than recommended, the installer is obliged to test whether Renoplast products are suitable for application in the conditions.

We recommend that materials from reliable manufacturers are used with Renoplast products. The liability of Renoplast Sp. z o.o. as to the scope and type of information provided is limited to claims in the case of gross negligence (intentional or negligent behaviour).



# STEP PROFILE

STEP PROFILE FOR THICK PAVING TILES INSTALLED ON 'SMART' PEDESTALS



## INSTALLATION:

