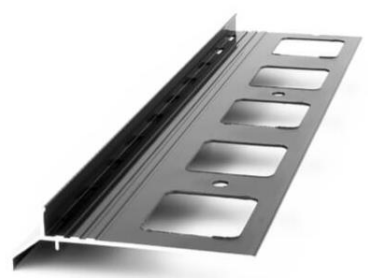




# DRIP PROFILE

FOR TILED TERRACES AND BALCONIES



## SUPPLEMENTARY ELEMENTS:



**NZ 30/90**  
outside corner 90°



**NW 30/90**  
inside corner 90°



**NZ 30/135**  
outside corner 135°



**NW 30/135**  
inside corner 135°



**L 30/40**  
connector



**OP 30/40**  
end cup  
(right/left)



horizontal  
movement  
joint  
connector

## USE:

K30 is an edging and finishing profile with drip edge designed for tiled terraces and balconies. It is made of polyester coated aluminium and is suitable for waterproofing bonded with ceramic tile covering. Its shape ensures that it is embedded in the waterproofing and well-integrated with ceramic flooring. The profile has holes punctured along its edge to allow discharge of water that may seep from under the tiles.

## PROPERTIES:

- efficient water shedding
- excellent corrosive resistance
- szczelność w strefie okapowej
- quick and easy installation
- profiles under European Technical Assessment ETA
- holes in profile draining water from the under tile layer
- the set includes mounting pins and screws

## TECHNICAL DATA:

Profile:	Aluminum alloy core covered with conversion layer and powder paint
Weight:	approx. 510 g/mb
Length of profile:	200 cm
Paint layer thickness:	min. 60 µm

## PROFILES COLOUR PALETTE:



RAL 8019



RAL 7037



RAL 7024

The presented colors are illustrative. Other colors from the RAL palette are available on request.

## SUBSTRATES:

Cement screed or other substrates that are sound and rigid.

## SURFACE PREPARATION:

The surface must be sound, even, clean of surface contaminants. Cement screed must be set, cured, free of cracking and have properly installed expansion joints. A drop in the screed by ca. 3 mm or an indent, running along the edge of the balcony at the width corresponding to the width of the installed profile (80 mm), must be formed in the substrate so that the profile is installed flush with the screed surface.

The step can be formed using a template made of ABS plastic, available as an ancillary product:

1. For freshly applied screeds - by embedding the template in fresh mortar.
2. For set screeds - by placing the template along the balcony edge and applying a repair mortar to level and finish flush with template surface

## TOOLS:

Metre ruler or tape measure, aluminium-cutting saw, knife, agitator or low-speed drill, hoop paddle, stainless steel trowel, brush, block brush, putty knife or bucket trowel, measuring cup. Hand saw or circular saw for cutting aluminium can be used. Cutting tools that generate high levels of heat (abrupt temperature increase) like angle grinder must not be used for cutting profiles.

## APPLICATION CONDITIONS:

Profiles installation should be carried out in conditions suitable for materials used for waterproofing and bonding/fixing such as waterproofing coating, mechanical or chemical anchors, screws and others and in accordance with the technical data sheets of these materials.

## INSTALLATION:

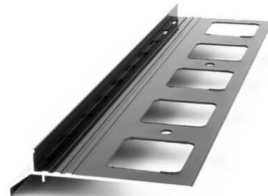
Start with corners installation. Put the corners in place to mark the location of the anchors, drill holes, insert anchor sleeves in the mounting holes and secure the profiles in place to measure and position next sections of the straight profiles. Measure, position and align straight sections of drip edge profiles along the edge, making sure that 2 mm expansion gaps are left between profiles and at the profile/wall joints a gap suitable to allow for the end cap OP30/40 installation. Install the straight drip edge as corner pieces. Apply a thin layer of waterproofing across the previously formed drop/indent running along balcony/terrace perimeter and position the profiles and corners embedding them into it. Make sure that they are aligned and flush. After initial setting of the waterproofing, tighten the anchors. Mount a horizontal movement joint connector at joints between profiles/corners on the underside of the profile and a clip-on L30/40 connector from the top. Seal the expansion joints that were formed with a sealant for exteriors, e.g. PU sealant. To reinforce the connection between the perforated anchoring leg and the cement screed and to seal it, press sealing tape in the waterproofing compound. Next, apply the waterproof compound across entire surface in conformity with the information provided in the technical data sheet of the waterproofing. Lay the tiles over waterproofing layer on suitable adhesive (minimum C2-S1). Make sure that a minimum 6 mm gap is left between the tile edging upper lip and the tiles and install backer rod over the drainage holes. Seal the gap between the tile edging lip and the tiles with an elastic sealant for exteriors, e.g. PU sealant.

Movement joints should be installed at intervals to ensure that floor surface areas between them are not larger than 2x2 m. Joint width should not be less than 5 mm and they should be filled with a grout suitable for external applications on balconies or terraces. Preferable are small size tiles in light colours, providing low surface absorption. The screed that is tiled over should have a slope of 1.5-2%. Profile installation is shown in the drawing illustrating its sample installation.



# DRIP PROFILE

FOR TILED TERRACES AND BALCONIES



## GENERAL LIMITATIONS - INSTALLATION:

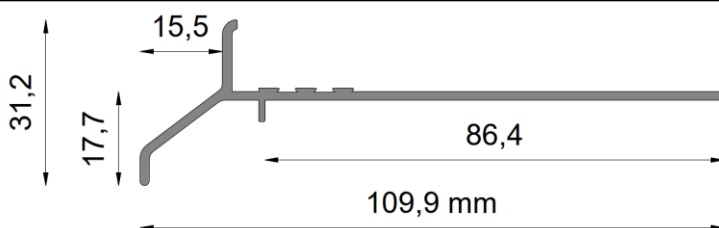
Wear safety glasses during installation works. If stained or soiled, clean the profiles immediately with water. If the stains dry out and harden, clean with a suitable cleaning agent, which will not damage the the paint coating on the profile (more information in the GENERAL LIMITATIONS - MAINTENANCE). When it comes to use and application of other materials, and in particular of waterproofing coatings, adhesives, grouts, sealing tapes, elastic sealants and others, apply materials suitable for outdoor applications on balconies, terraces/patios and follow the instructions provided in the technical data sheets of these products and other reference documents, required by law. The manufacturer shall not be liable for any damage resulting from improper use of the product, use of unsuitable materials, accessories or ancillary materials or use of improper tools. Installation works should be carried out in accordance with the design, the technical data sheets, applicable standards, good building practice, health and safety regulations.

## GENERAL LIMITATIONS - MAINTENANCE:

The profiles should be cleaned at least twice a year. For cleaning use water and non-scratch cloth. Do not use strong acidic or strong alkaline cleaning agents or surfactants that may react with aluminium. Organic solvents containing esters, ketones, alcohols, aromatic compounds, glycol esters, chlorinated hydrocarbons, etc. must not be used. After each washing the surface must be immediately rinsed with clean cold water. Salt and chemicals must not be used to remove ice around the profiles. It is recommended that balconies and terraces be inspected twice a year to check the technical condition of system elements. Any identified defects should be repaired promptly.

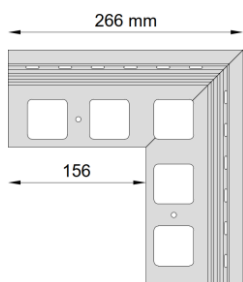
## DIMENSIONS:

### CROSS-SECTION:

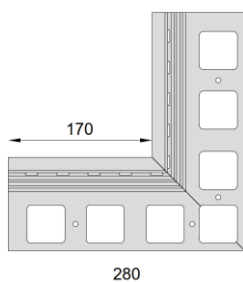


### CORNERS PROJECTIONS:

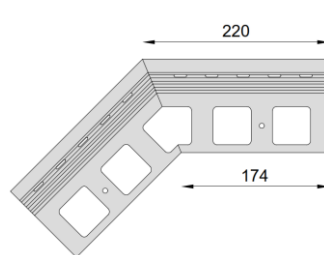
#### NZ 30/90



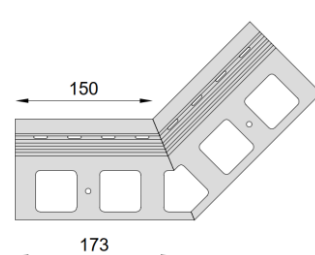
#### NW 30/90



#### NZ 30/135



#### NW 30/135

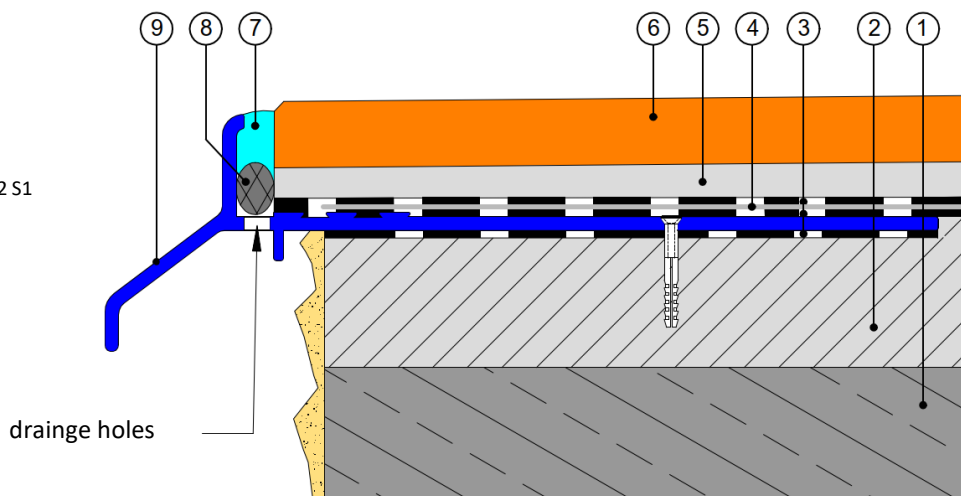


On request, external and internal corners of any angle are available. Measurement of angles at the construction site should be performed on a previously prepared foundation using a construction protractor with long arms with an accuracy of  $<1^\circ$ .

The K30 profile is also available on request in the form of an arc welded on the basis of a previously provided template which constitutes the exact outline of the balcony / terrace slab.

## APPLICATION EXAMPLE :

1. Balcony deck
2. Slope screed 1,5-2,0%
3. Waterproofing
4. Sealing tape
5. Cement base adhesive min. C2 S1
6. Frost resistant tiles
7. Polyurethane sealant
8. Backer rod (6 mm)
9. Profile RENOPLAST K30



# Renoplast

RENOPLAST Sp. z o.o.

Ul. Fabryczna 14, 34-300 Żywiec

Tel. +48 33 863 78 89

[biuro@renoplast.pl](mailto:biuro@renoplast.pl)

[www.renoplast.pl](http://www.renoplast.pl)

### NOTICE:

Version: 05.02.2021. Publication of this Technical Data Sheet renders previous editions invalid.

The above information refers only to general conditions of use of our products and cannot replace a technical design. When used in conditions other than recommended, the installer is obliged to test whether our products are suitable for application in the conditions.

We recommend that materials from reliable manufacturers are used with RENOPLAST products