

# Renoplast



**MODERN SOLUTIONS FOR  
TERRACES AND BALCONIES**









# RENOPLAST HOOD PROFILES

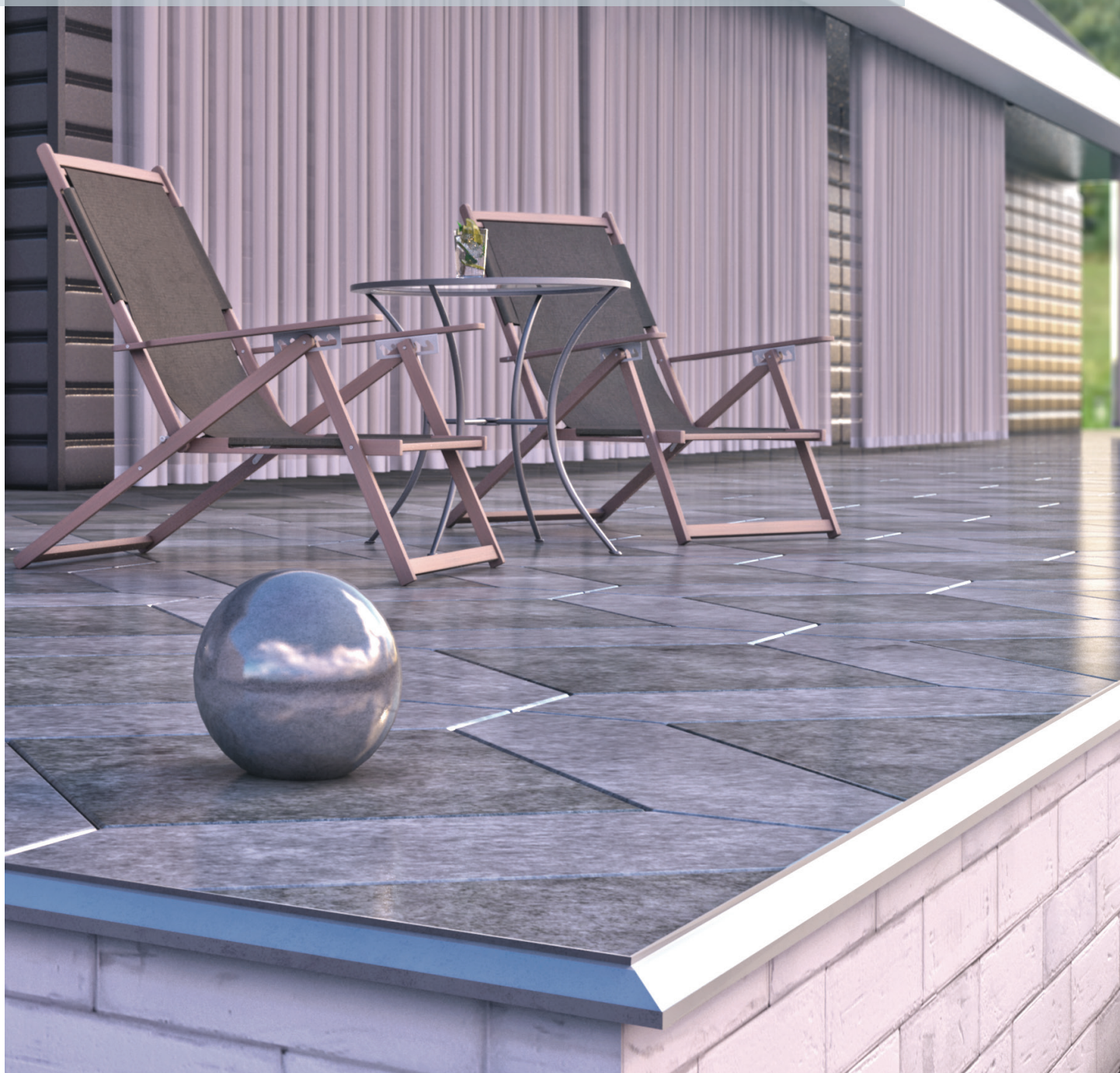
Renoplast profiles are made of appropriately selected aluminium alloy coated with high quality polyester coatings that ensure full corrosion protection and long-lasting, intensive colour due to application of modern technologies and powder coatings that meet the requirements of Qualicoat system.





# **BALCONY PROFILES**

**CERAMIC TILES FLOORING  
ON AN ADHESIVE MORTAR**



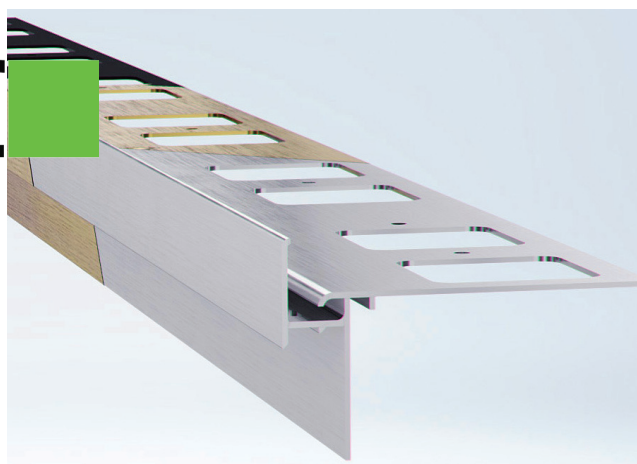


# PROBLEMS

# SOLUTIONS



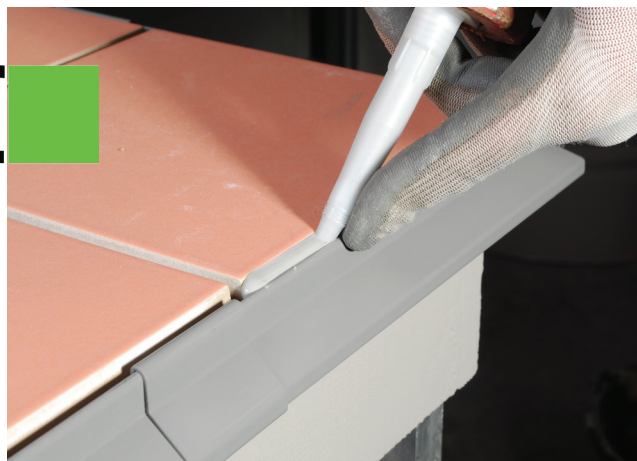
**DRIP TRAYS CORROSION**



**GUARANTEED CORROSION PROTECTION**



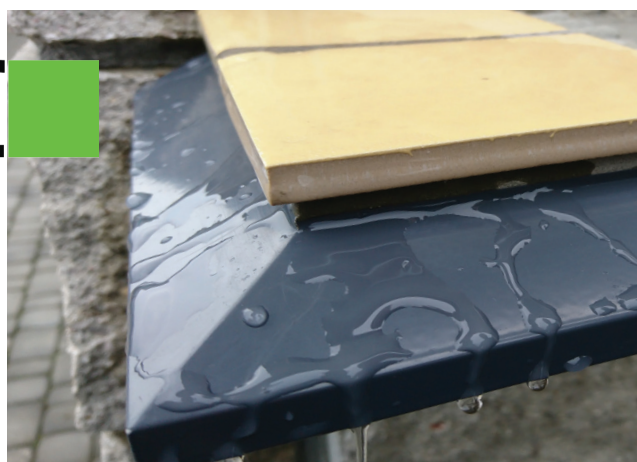
**LEAKAGES**



**FULL TIGHTNESS IN THE HOOD AREA**



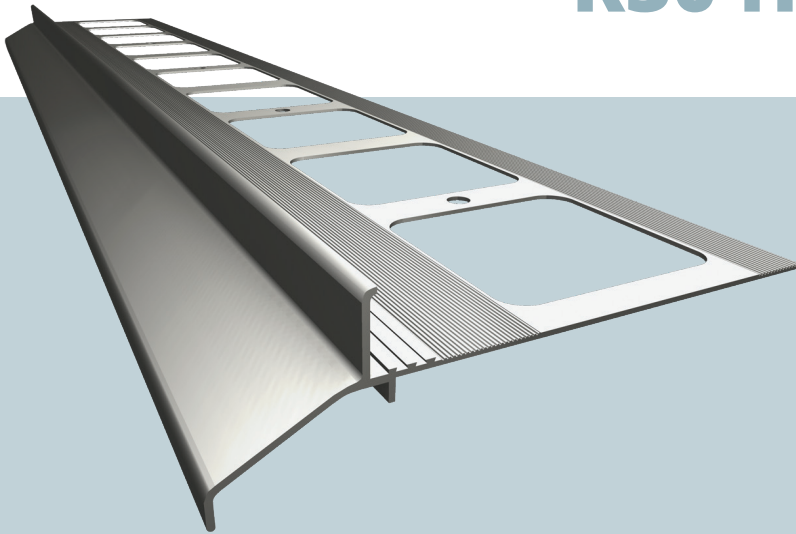
**IMPROPER DRAINING OF WATER FROM THE FLOORING**



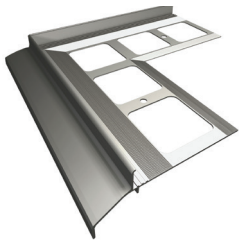
**RELIABLE AND EFFICIENT WATER DRAINAGE**



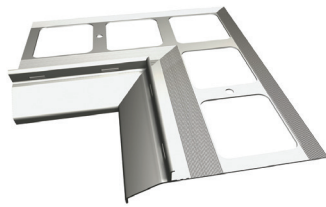
# K30 HOOD PROFILE



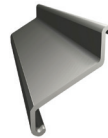
K30 is the most functional and popular hood profile for finishing floorings made of ceramic tiles. Its unique shape ensures perfect tightness along the edges of the flooring, at the same time allowing for free drainage of moisture from the underfloor layers in the hood area.



NZ 30/90  
External corner 90°



NW 30/90  
Internal corner 90°

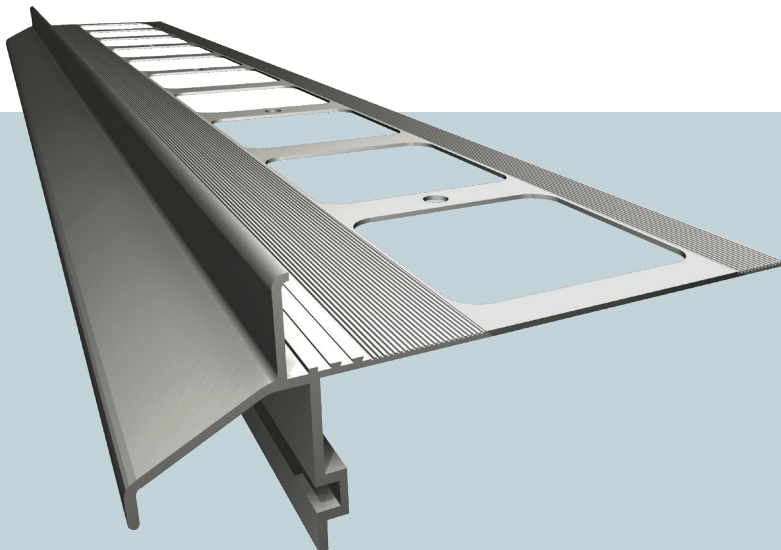


L30/40  
Connector



OP 30/40  
Wall bumper

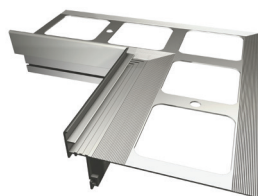
# K40 HOOD PROFILE



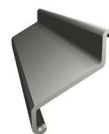
K40 is a hood profile intended for finishing floorings made of ceramic tiles. Its unique shape ensures perfect tightness along the edges of the flooring, at the same time allowing for free drainage of moisture from the underfloor layers in the hood area. The structure of the profile allows for systemic installation of a drainpipe using MG75 or G75 hooks.



NZ 40/90  
External corner 90°



NW 40/90  
Internal corner 90°



L30/40  
Connector

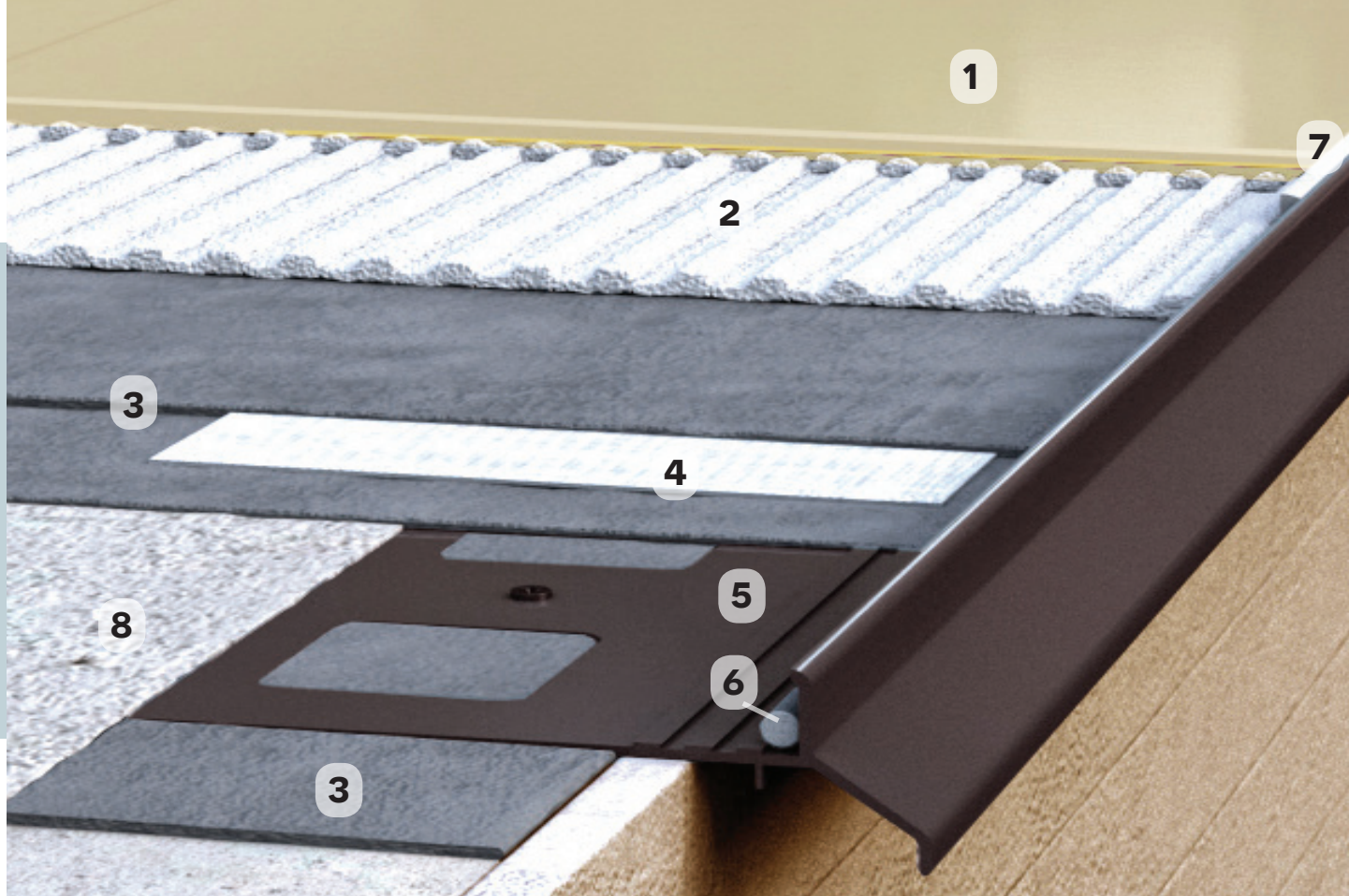


OP 30/40  
Wall bumper

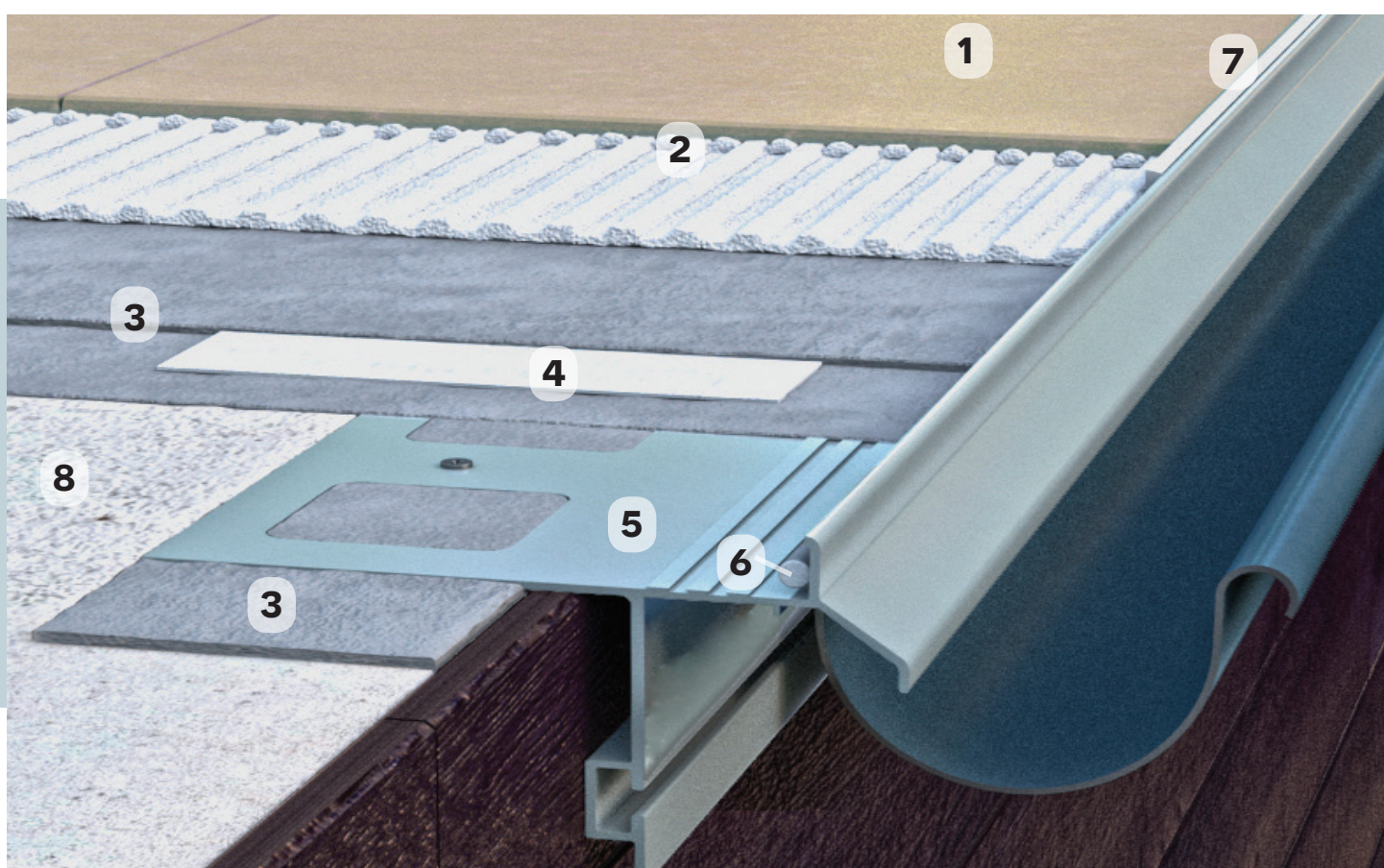


MG 75/G 75  
Drainpipe hook





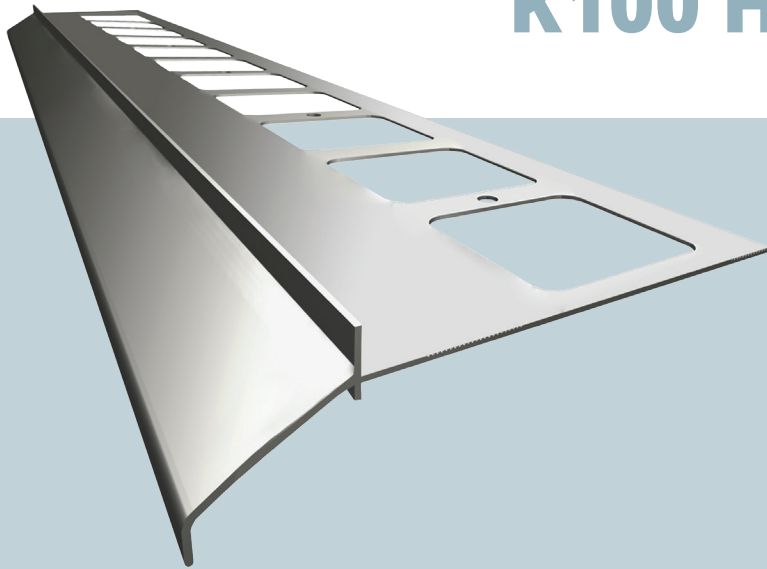
1. CERAMIC TILES; 2. ADHESIVE MORTAR; 3. SEALING MORTAR;  
4. REINFORCING TAPE; 5. K30 HOOD PROFILE; 6. BACKING STRIPE;  
7. FLEXIBLE SEALING; 8. CEMENT PRIMER;



1. CERAMIC TILES; 2. ADHESIVE MORTAR; 3. SEALING MORTAR;  
4. REINFORCING TAPE; 5. K40 HOOD PROFILE; 6. BACKING STRIPE;  
7. FLEXIBLE SEALING; 8. CEMENT PRIMER;



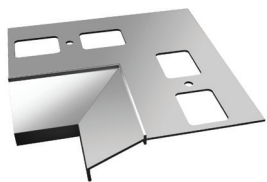
# K100 HOOD PROFILE



K100 is the most economic hood profile that ensures stable connection with the substrate and perfect water drainage from the flooring.



NZ 100/90  
External corner 90°



NW 100/90  
Internal corner 90°

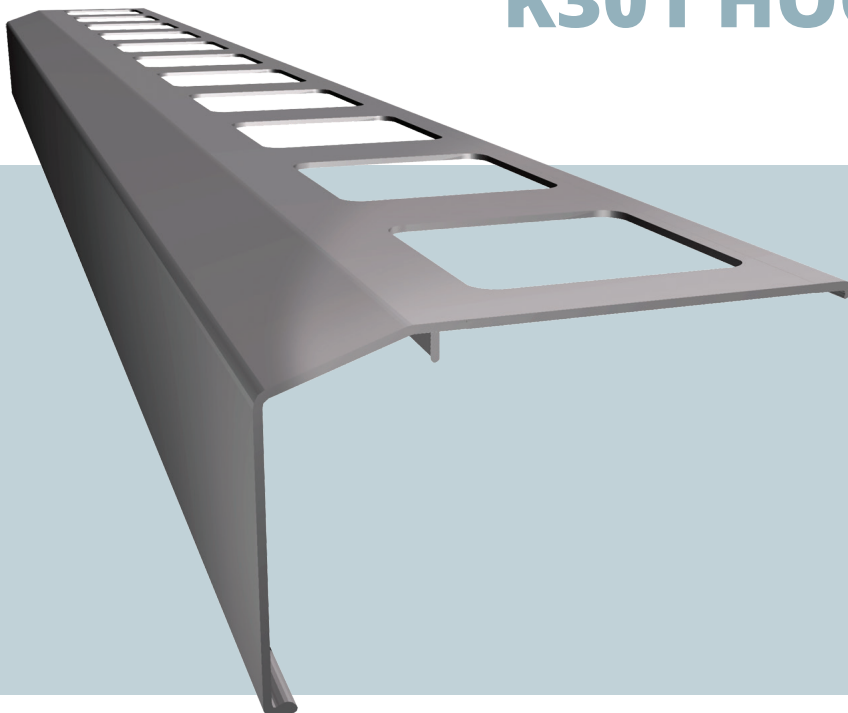


L100  
Connector



OP 100  
Wall bumper

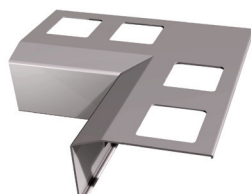
# K301 HOOD PROFILE



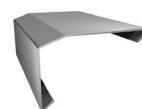
K301 is a hood profile of a distinct shape that ensures perfect water drainage from the flooring. The profile provides the balcony with a robust appearance due to a prolonged drip edge.



NZ 301/90  
External corner 90°



NW 301/90  
Internal corner 90°

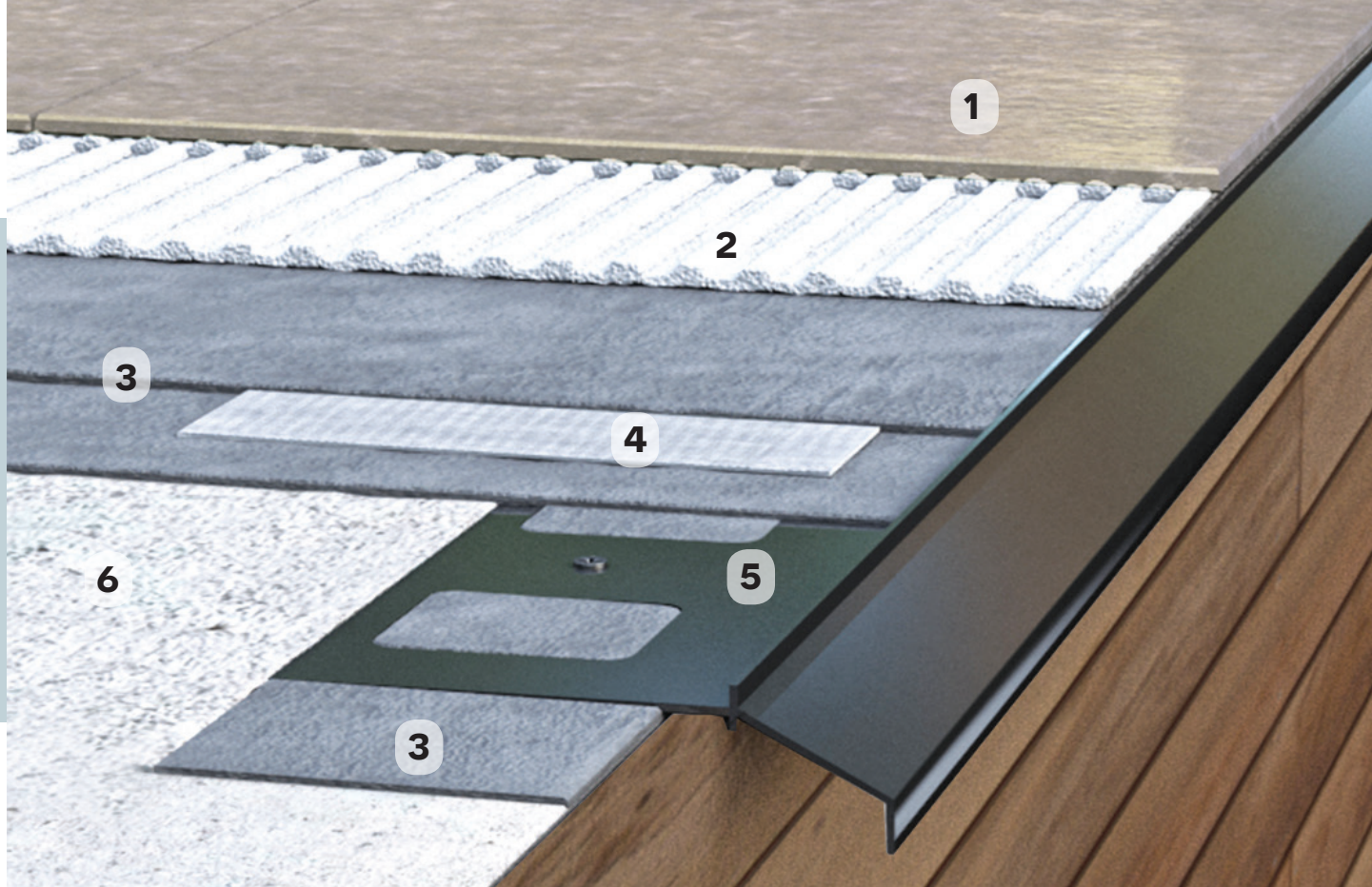


L301  
Connector

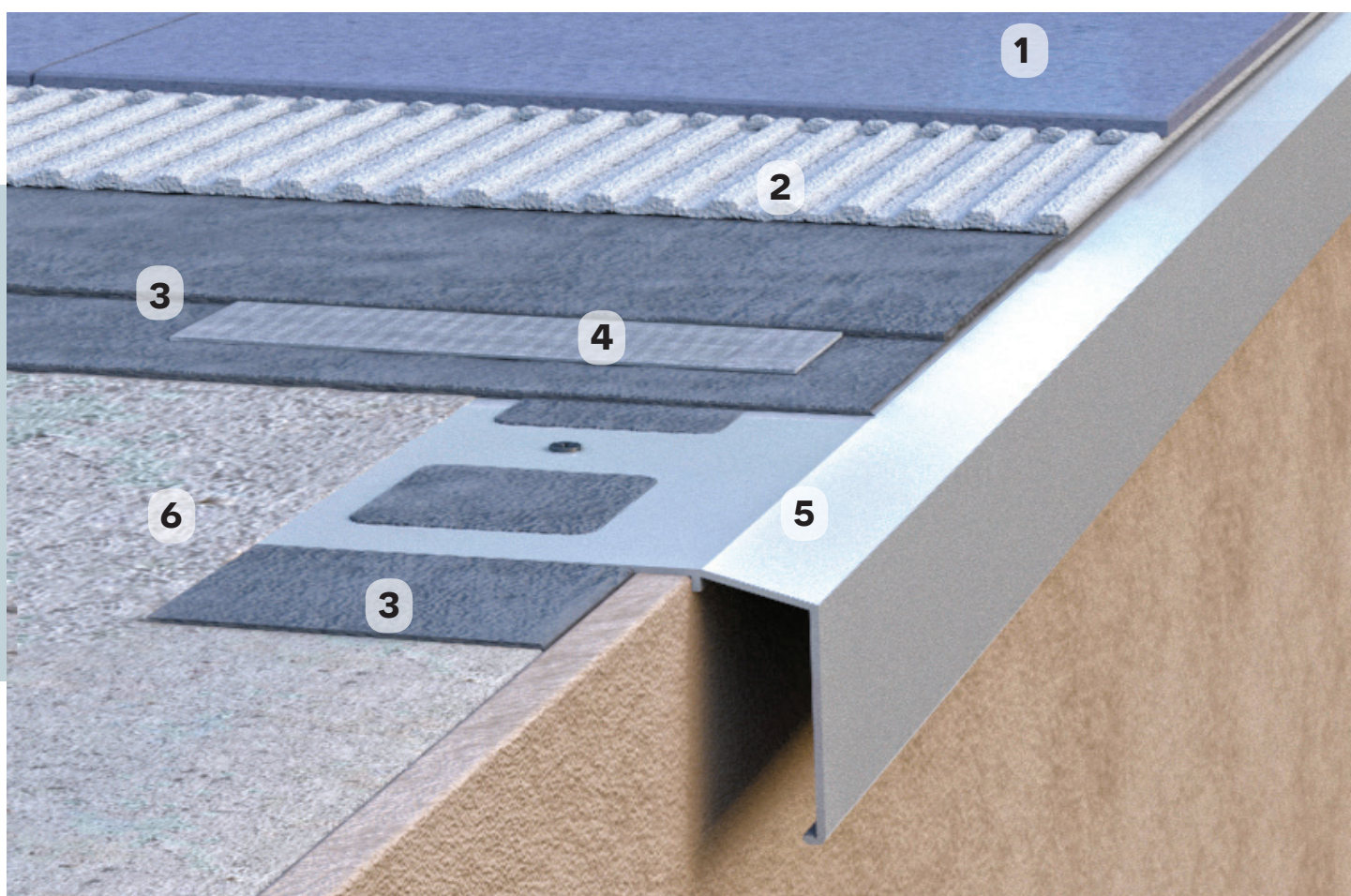


OP 301  
Wall bumper





1. CERAMIC TILES; 2. ADHESIVE MORTAR; 3. SEALING MORTAR;  
4. REINFORCING TAPE; 5. K100 HOOD PROFILE; 6. CEMENT PRIMER;



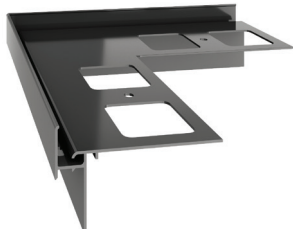
1. CERAMIC TILES; 2. ADHESIVE MORTAR; 3. SEALING MORTAR;  
4. REINFORCING TAPE; 5. K301 HOOD PROFILE; 6. CEMENT PRIMER;



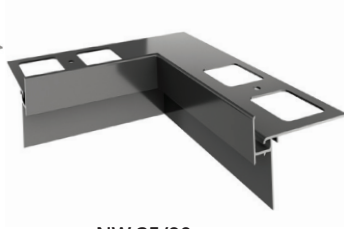
# K35 HOOD PROFILE



K35 is the most universal hood profile used for drainage and finishing of ceramic floorings laid on adhesive mortar. When combined with K35B side profile, it allows to reduce the costs of finishing of terrace or balcony hoods. It features an innovative manner of connection with a waterproofing layer via Clever tape. Moreover, K35 allows for installation of R50 system aluminium drainpipe.



NZ 35/90  
External corner 90°



NW 35/90  
Internal corner 90°



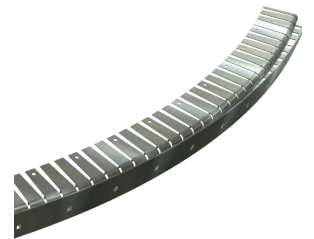
K35B  
Side profile



L35  
Connector



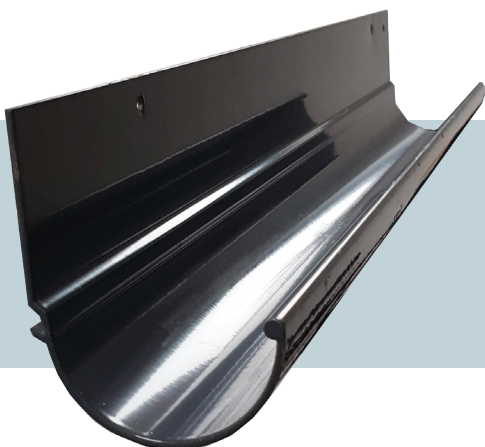
OP 50/35  
Wall bumper



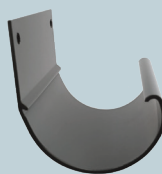
K35  
Incised arch

## R50 DRAINPIPE SYSTEM

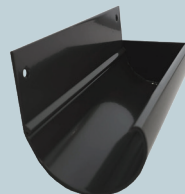
for K35 and W35 profiles



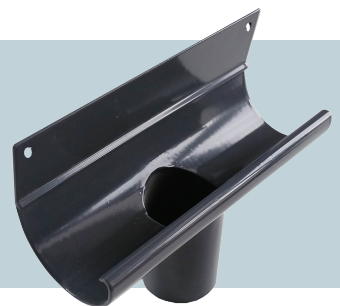
R50  
Aluminium drainpipe



Drainpipe connector

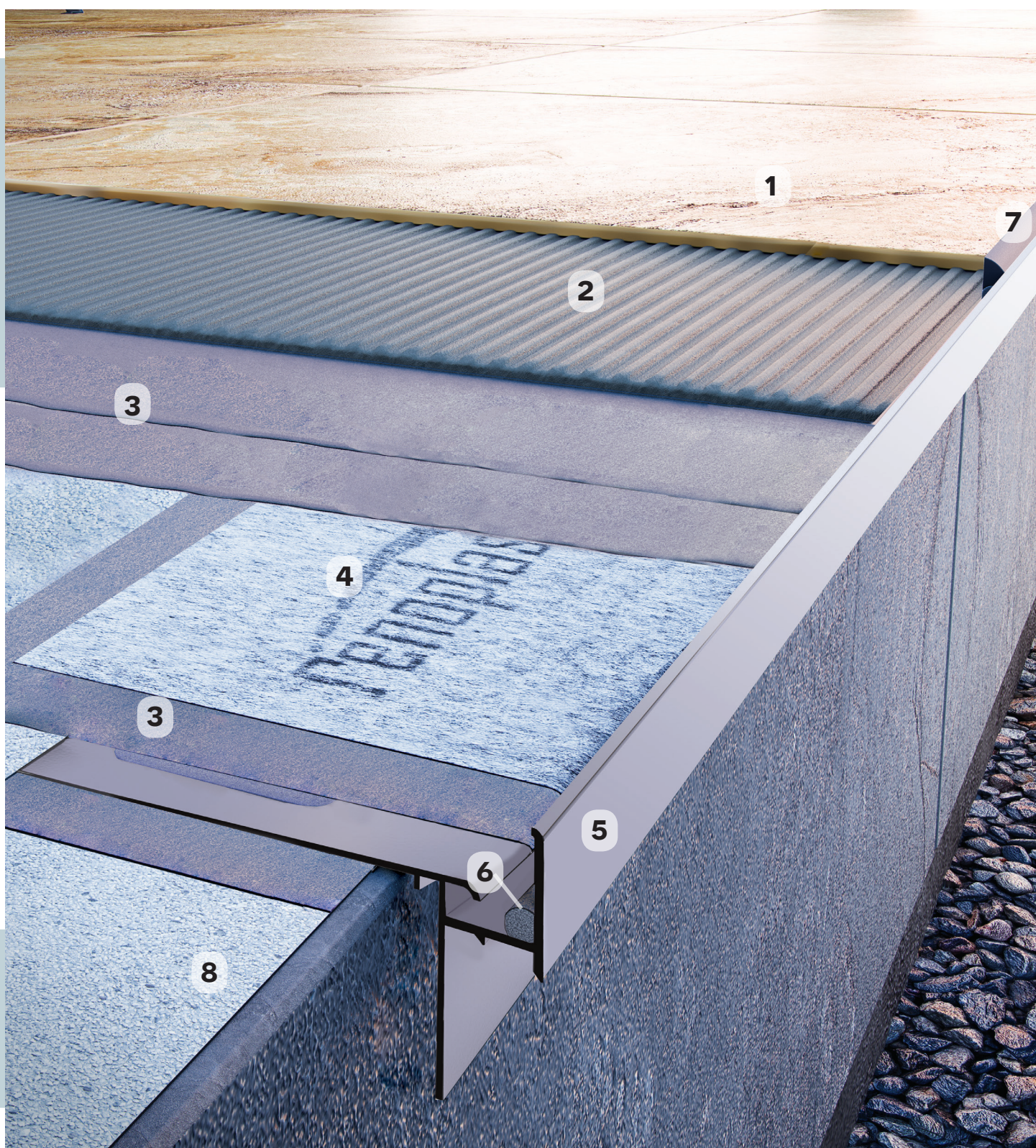


Drainpipe plug



Drain funnel

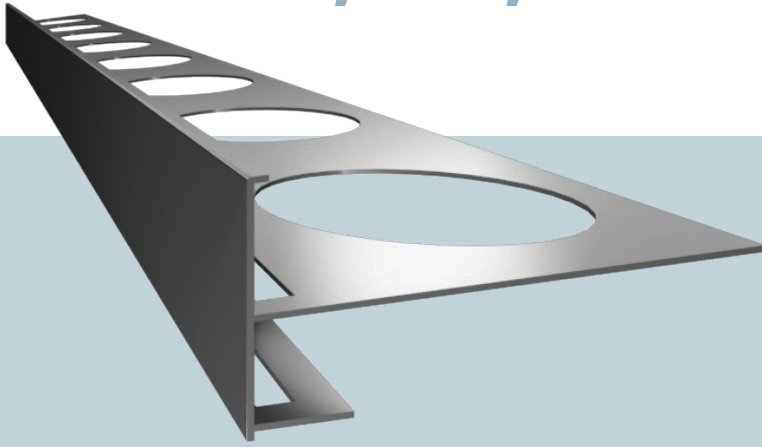




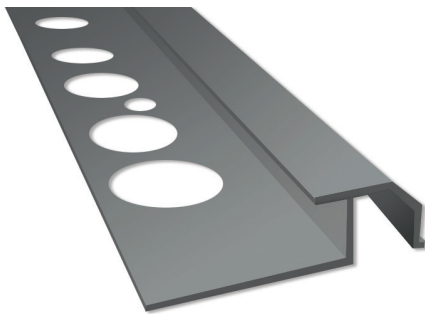
1. CERAMIC TILES; 2. ADHESIVE MORTAR; 3. SEALING MORTAR; 4. CLEVER TAPE;  
5. K35 HOOD PROFILE; 6. BACKING STRIP; 7. FLEXIBLE SEALING;  
8. CEMENT PRIMER;



# SC1, SC2, SC3 STAIRS PROFILES



SC1 profile (height 12 mm) and SC2 (height 18 mm) for finishing of edges of ground terraces and stairs with floorings and ceramic linings. It ensures tight connection with ceramic flooring with simultaneous drainage of water from the hood area. Its unique shape ensures perfect tightness along the edges of the flooring, at the same time allowing for free drainage of moisture from the underfloor layers in the hood area.



SC3 profile is used for finishing of edges of stairs stringers, as well as plinths.

## ADDITIONAL MATERIALS BALCONIES AND TERRACES WITH FLOORING MADE OF CERAMIC TILES



**MG 75 Drainpipe bracket**  
(for Marley or  
Gamrat drainpipes)  
1 set = 4 pieces of MG75 hooks +  
8 pieces of W13 bolts

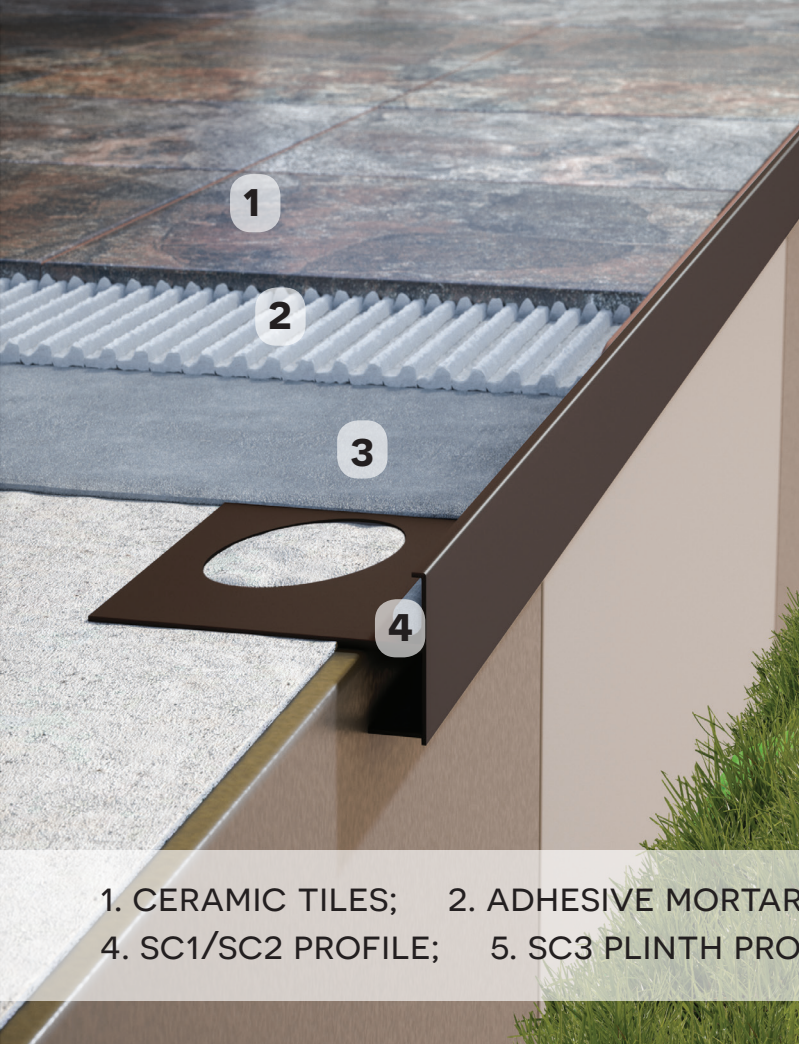


**G 75 Drainpipe bracket**  
(for Gamrat drainpipes)  
1 set = 4 pieces of G75 hooks +  
8 pieces of W13 bolts



**Backing  
stripe Ø 6**





1. CERAMIC TILES; 2. ADHESIVE MORTAR; 3. SEALING MORTAR;  
4. SC1/SC2 PROFILE; 5. SC3 PLINTH PROFILE



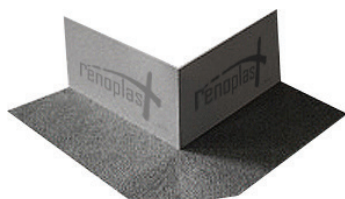
**PL3**  
Sealing tape  
(width 12 cm)



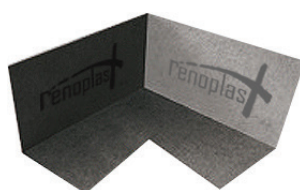
**PL3B**  
Sealing tape  
with a butyl stripe  
(width 12 cm)



**CLEVER**  
reinforcing tape  
(width 12 cm  
or width 16 cm)  
for K35 and W35 profiles



**PL NWW**  
Internal sealing corner



**PL NWZ**  
External sealing corner



**S60, S80**  
Installation template  
S60 – 2 m (width 6 cm)  
S80 – 2 m (width 8 cm)





# **BALCONY AND TERRACE PROFILES**

**RAISED FLOORING –  
VENTILATED**



# HOOD PROFILES



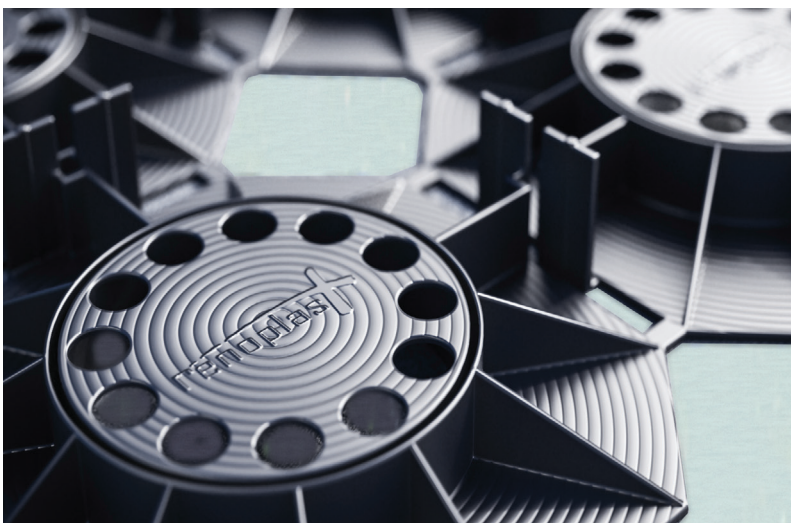
**GUARANTEED PROTECTION  
PROTECTION**

**FULL TIGHTNESS  
IN THE HOOD AREA**

**RELIABLE AND EFFICIENT  
WATER DRAINAGE**

**COMPLETE SOLUTION FOR  
HOOD FINISHING**

# SMART TERRACE PADS



**ECONOMIC USE DUE TO  
POSSIBILITY TO SEPARATE  
THE PAD**

**STABLE SUPPORT FOR EDGE  
SLABS**

**SIMPLE INSTALLATION**



# W30 HOOD PROFILE



W30 is a profile used in terraces and balconies with raised and ventilated flooring made of stone, concrete, thick ceramic slabs, arranged on pads with drainage under tiles.



NZ W30/90  
External corner 90°



NW W30/90  
Internal corner 90°



LW30  
Connector

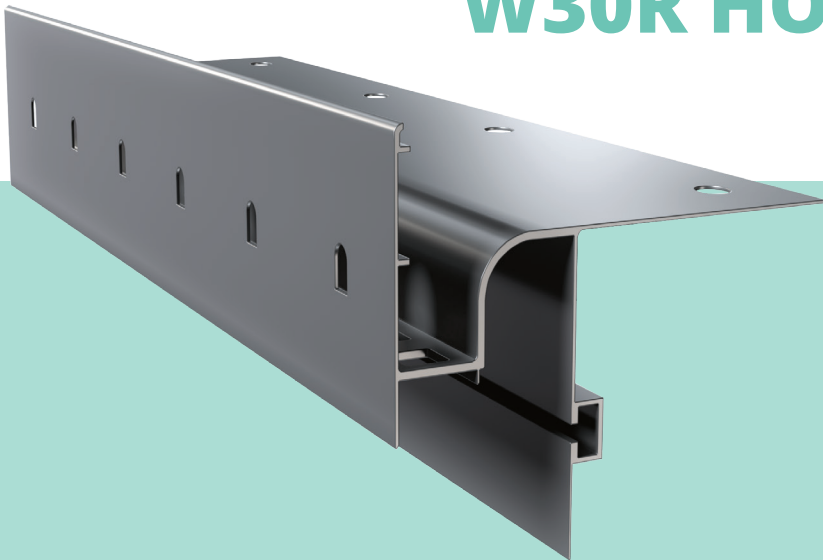


OP W30  
Wall bumper



W30  
Incised arch

# W30R HOOD PROFILE



W30R is a profile used in terraces and balconies with raised and ventilated flooring made of stone, concrete or thick ceramic slabs, arranged on pads. The structure of the profile allows for systemic installation of a drainpipe using MG75 or G75 hooks.



NZ W30R/90  
External corner 90°



NW W30R/90  
Internal corner 90°



LW30R  
Connector

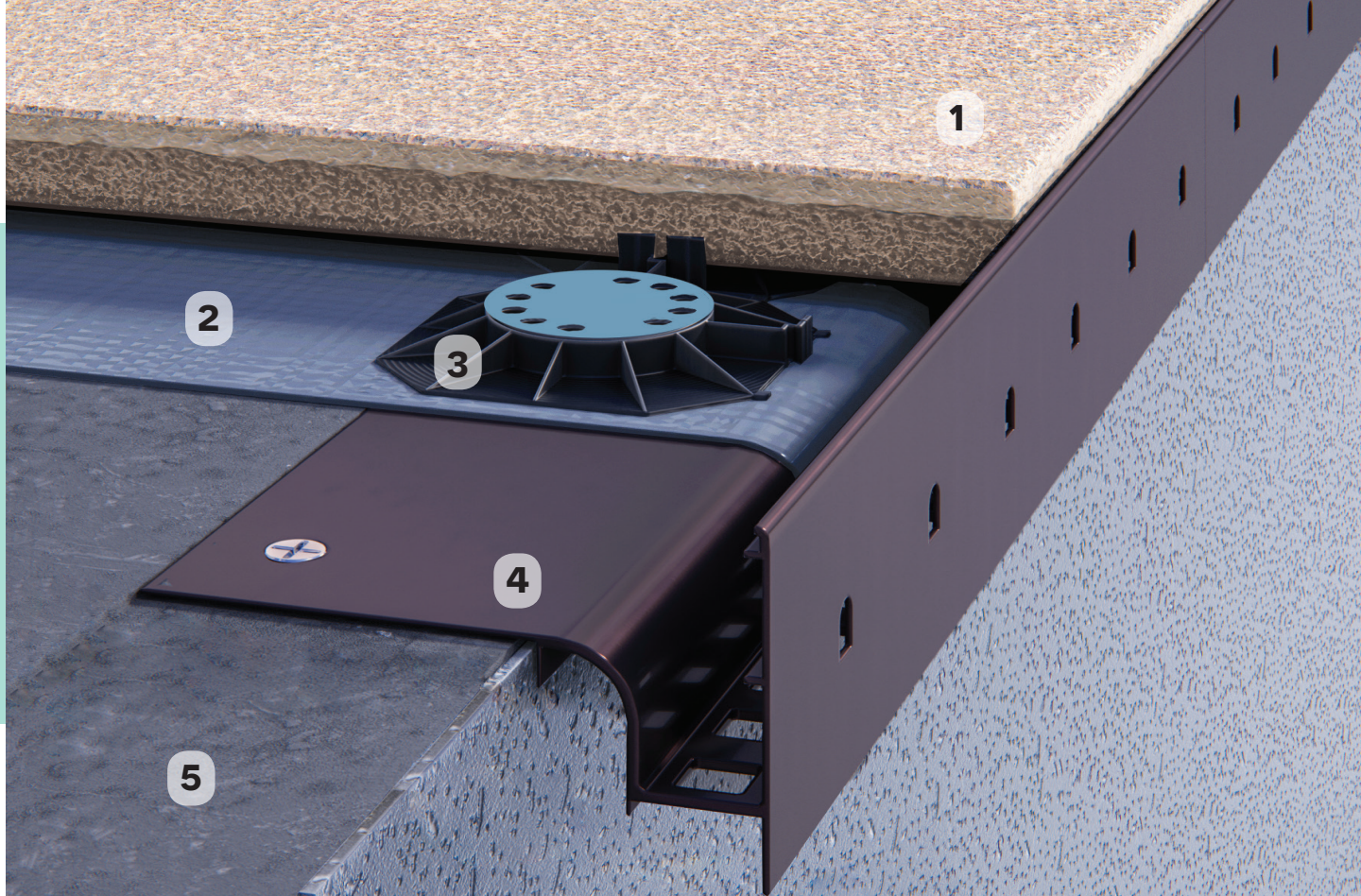


OP W30R  
Wall bumper

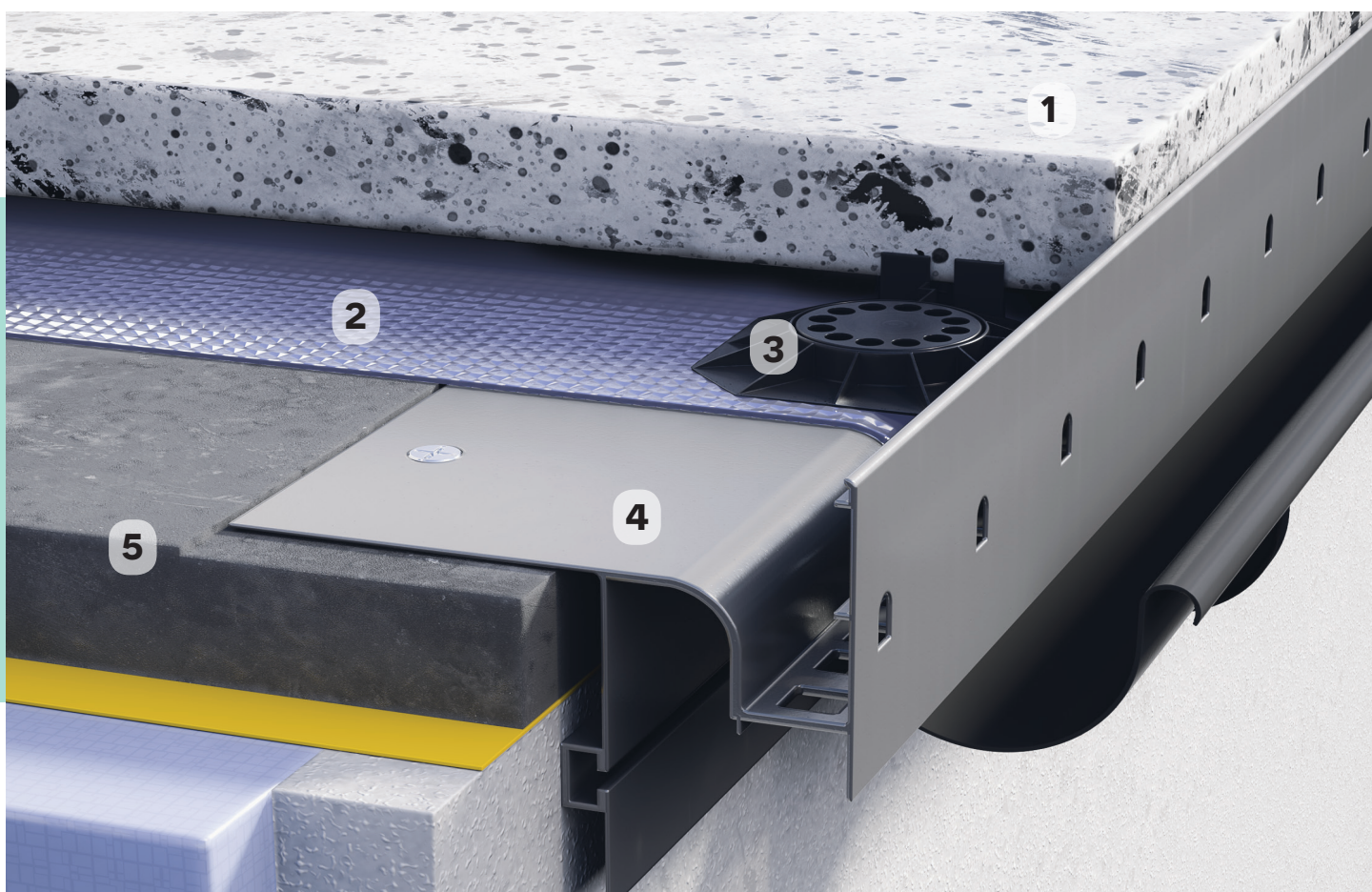


MG 75/G 75  
Drainpipe hook





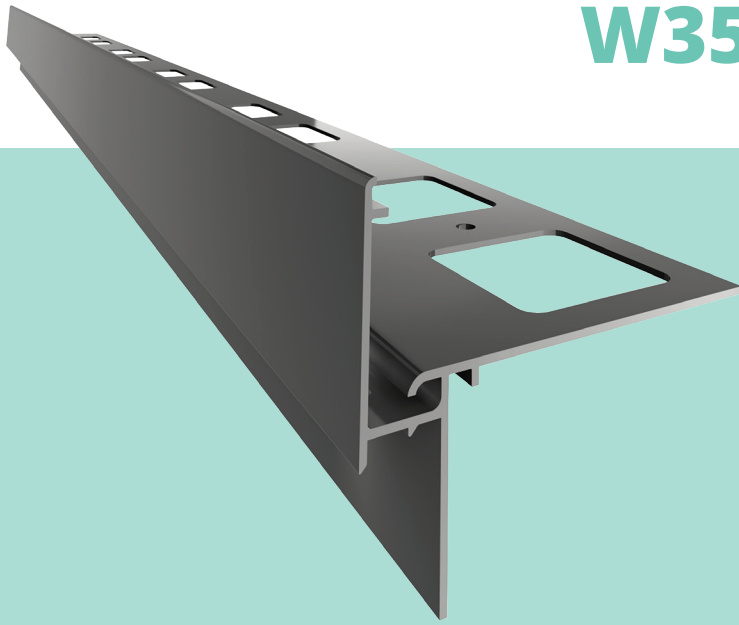
1. STONEWARE, STONE OR CONCRETE SLABS; 2. WATERPROOFING;  
3. SMART PAD; 4. W30 HOOD PROFILE; 5. CEMENT PRIMER;



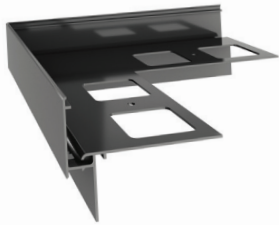
1. STONEWARE, STONE OR CONCRETE SLABS; 2. WATERPROOFING;  
3. SMART PAD; 4. W30R HOOD PROFILE; 5. CEMENT PRIMER;



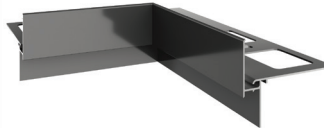
# W35 HOOD PROFILE



W35 is a profile used in terraces and balconies with raised and ventilated flooring made of stone, concrete or thick ceramic slabs, arranged on pads. The design of the profile allows for application of PVC flange or Clever tape, which ensures tight connection with the waterproofing. It is suggested to fill the joints between the slabs and the profile using e.g. polyurethane mass or MS POLIMER.



NZ W35/90  
External corner 90°



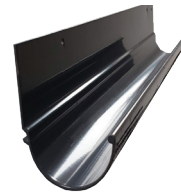
NW W35/90  
Internal corner 90°



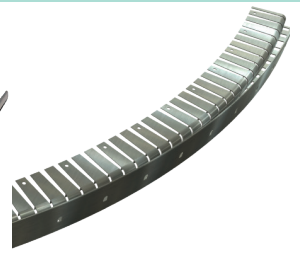
W35B  
Side profile



LW35  
Connector



R50  
Drainpipe



W35  
Incised arch

# K60 HOOD PROFILE



K60 is a profile used in terraces and balconies with flooring made of stone, concrete or thick ceramic slabs, arranged on a drainage layer made of mixture of aggregate or on SMART terrace pads. The structure of the profile allows for systemic installation of a drainpipe using MG75 or G75 hooks.



NZ 60/90  
External corner 90°



NW 60/90  
Internal corner 90°



L60  
Connector

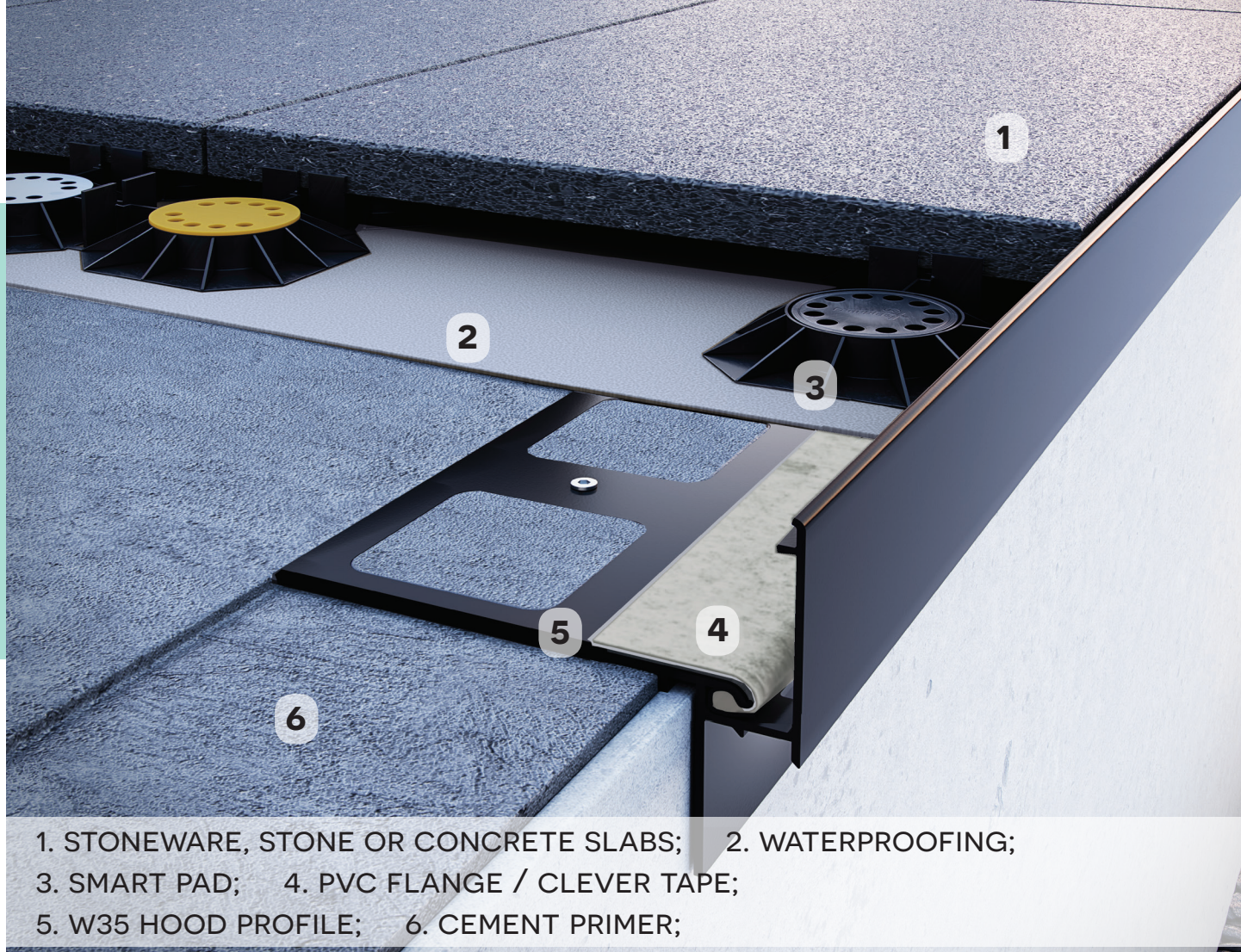


OP 60  
Wall bumper



MG 75/G75  
Drainpipe hook

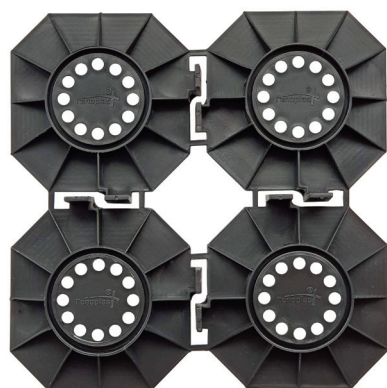




1. STONEWARE, STONE OR CONCRETE SLABS; 2. WATERPROOFING;  
3. SMART PAD; 4. K60 HOOD PROFILE; 5. CEMENT PRIMER;



## SMART TERRACE PAD



SMART  
Terrace pad

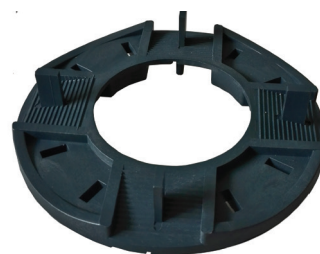


Spacer sleeve



Spacer pads  
0.5 mm - 3 mm

## UNI TERRACE PAD



UNI  
Pad



Levelling  
wedge

## AUXILIARY MATERIALS



MG 75 Drainpipe bracket  
(for Marley or Gamrat drainpipes)  
1 set = 4 pieces of MG75 hooks +  
8 pieces of W13 bolts



G 75 Drainpipe bracket  
(for Gamrat drainpipes)  
1 set = 4 pieces of G75 hooks +  
8 pieces of W13 bolts



CLEVER  
reinforcing tape  
(width 12 cm  
or width 16 cm)  
for K35 and W35 profiles



PVC  
sealing flange  
for W35 profiles



S80  
Installation template  
S80 - 2 m (width 8 cm)

## R50 DRAINPIPE SYSTEM for K35 and W35 profiles



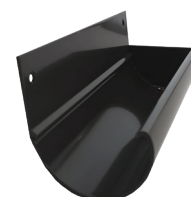
R50  
Aluminium drainpipe



Drain funnel

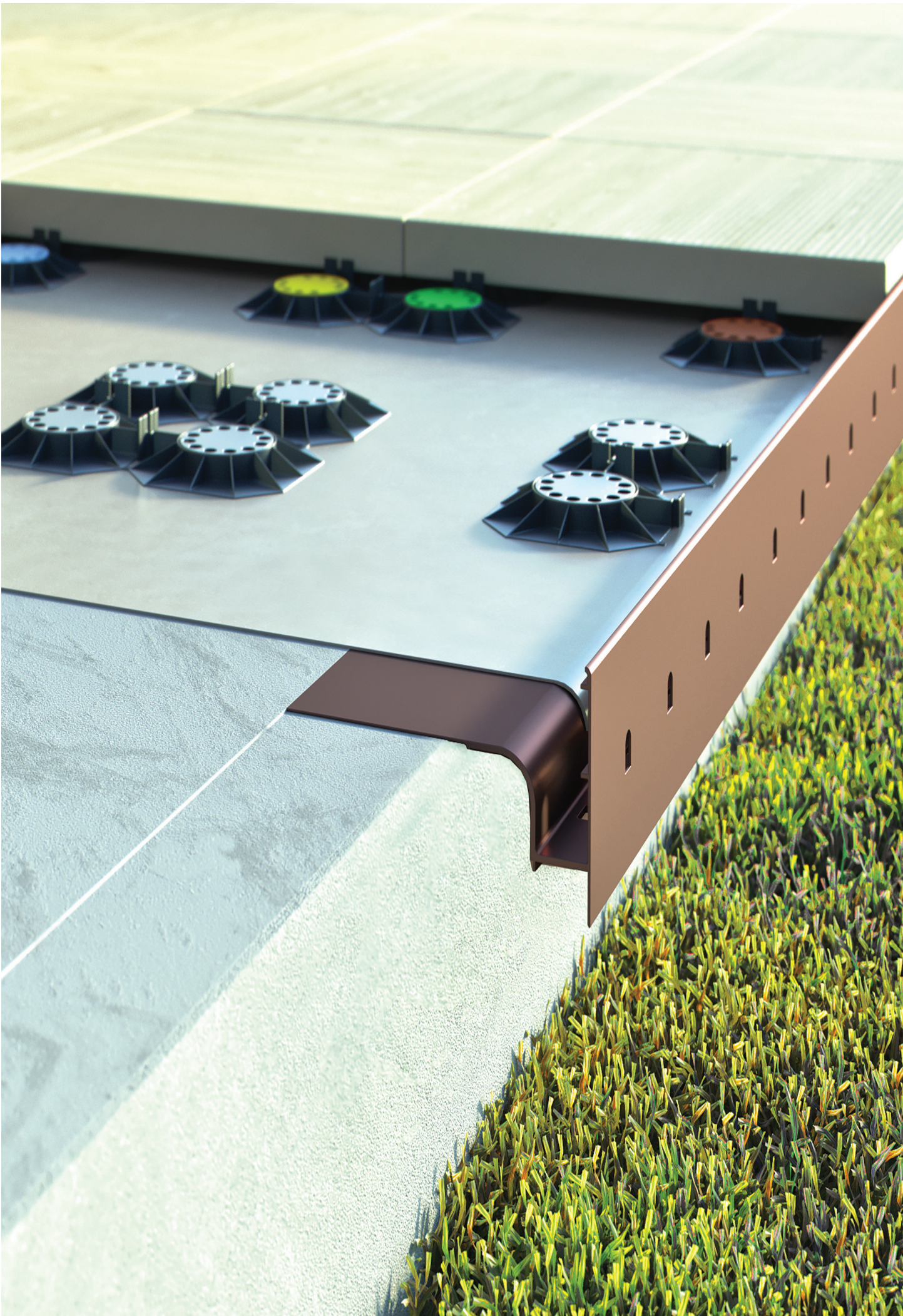


Drainpipe connector



Drainpipe plug







A photograph of a modern interior space, likely a lounge or office area, viewed through large glass windows. The floor is covered in a dense layer of small, light-colored gravel. The background shows a bright, minimalist interior with white walls, a long white table, and several blue chairs. The text "BALCONY PROFILES" and "RESIN FLOORING" is overlaid on the image in a bold, black, sans-serif font.

# **BALCONY PROFILES**

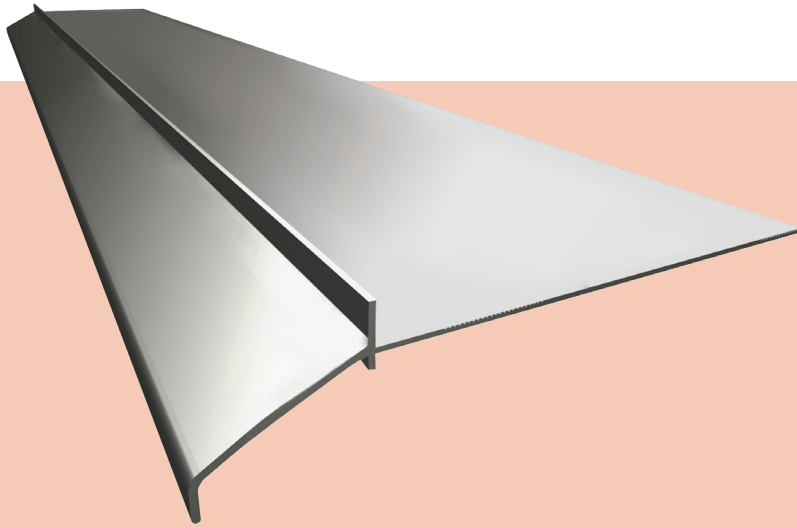
## **RESIN FLOORING**



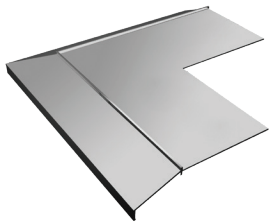




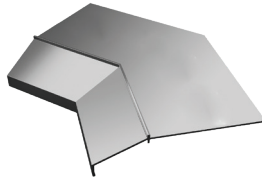
# K10 HOOD PROFILE



K10 is a hood profile used in terraces and balconies with thin resin floorings. It is made of high quality aluminium covered with polyester coating.



NZ 10/90  
External corner 90°



NW 10/90  
Internal corner 90°

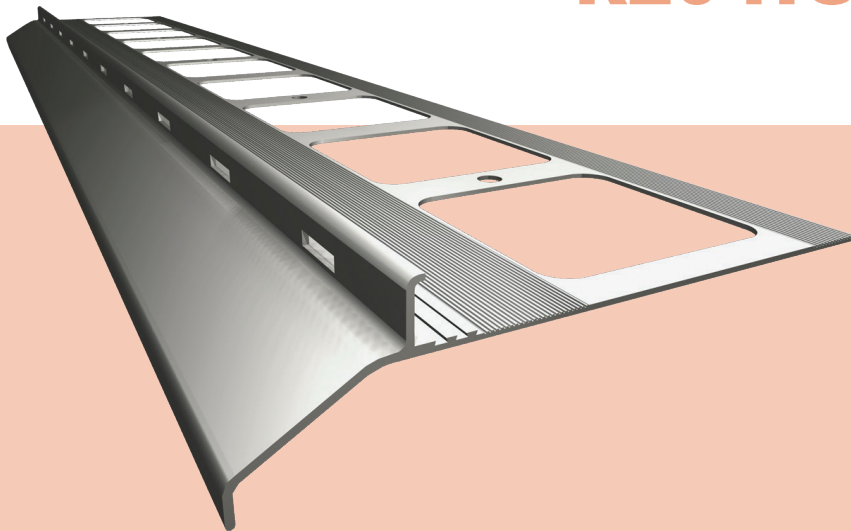


L10/100  
Connector



OP 10/100  
Wall bumper

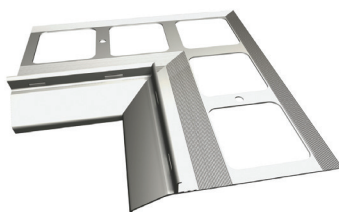
# K20 HOOD PROFILE



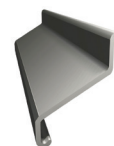
K20 is a hood profile used in terraces and balconies with "stone carpet" type resin floorings. The profile is made of high quality aluminium covered with polyester coating.



NZ 20/90  
External corner 90°

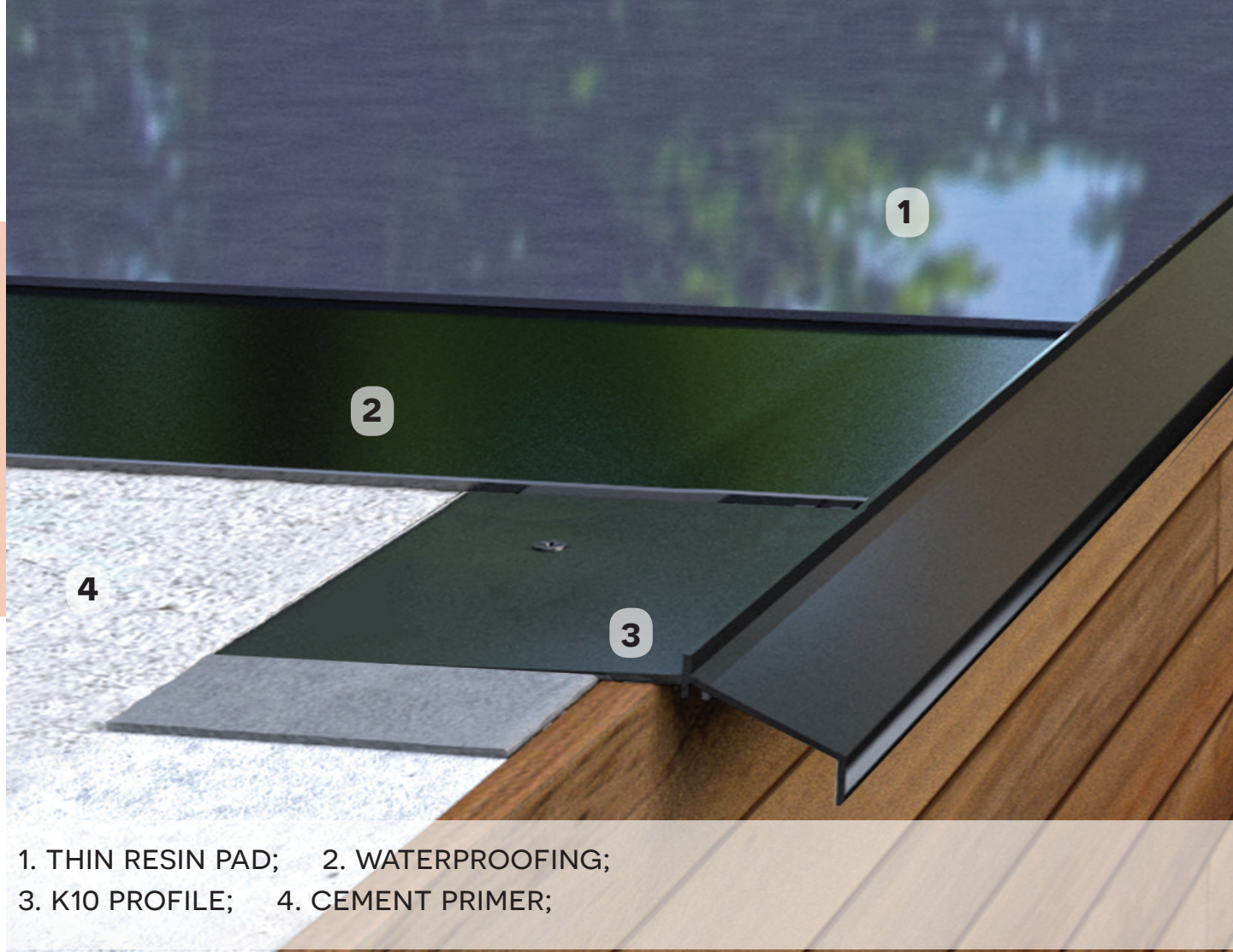


NW 20/90  
Internal corner 90°

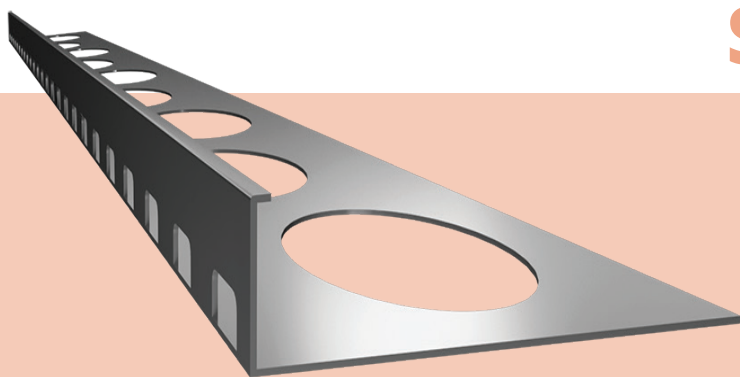


L20  
Connector









## SZ10, SZ15 PROFILE

SZ10, SZ15 are profiles used to finish edges of stair steps with so called “stone carpet” linings with the thickness of the lining layer of, respectively, 10 mm or 15 mm. The unique design of the stair profiles allows to finish both the edges between the tread and the raiser and the tread and the stringer. The passage between the edges is made by bending the profile, thus ensuring high durability and aesthetic appearance. Moreover, the shape of the profile and openings located along it allow to drain water from the stairs lining layer.



## V PROFILE

V is a profile that allows to finish the edges of stair steps with a “stone carpet” type lining with the thickness of the lining layer of, respectively, 10 mm or 15 mm. The shape of the profile and openings located along it allow to drain water from the stairs lining layer.







# WWW.RENOPLAST.PL



SKLEP.RENOPLAST.PL  
BIURO@RENOPLAST.PL  
ZAMOWIENIA@RENOPLAST.PL



33-863-78-89  
605-336-888  
603-350-482



FIND OR LIKE US ON

[HTTPS://WWW.FACEBOOK.COM/RENOPLAST](https://www.facebook.com/renoplast)



CERTIFIED BY THE POLISH  
BUILDING RESEARCH INSTITUTE



URZĄD PATENTOWY  
RZECZYPOSPOLITEJ POLSKIEJ

